



Welcome
to your instructions

F1327 : Naples Pro Bench

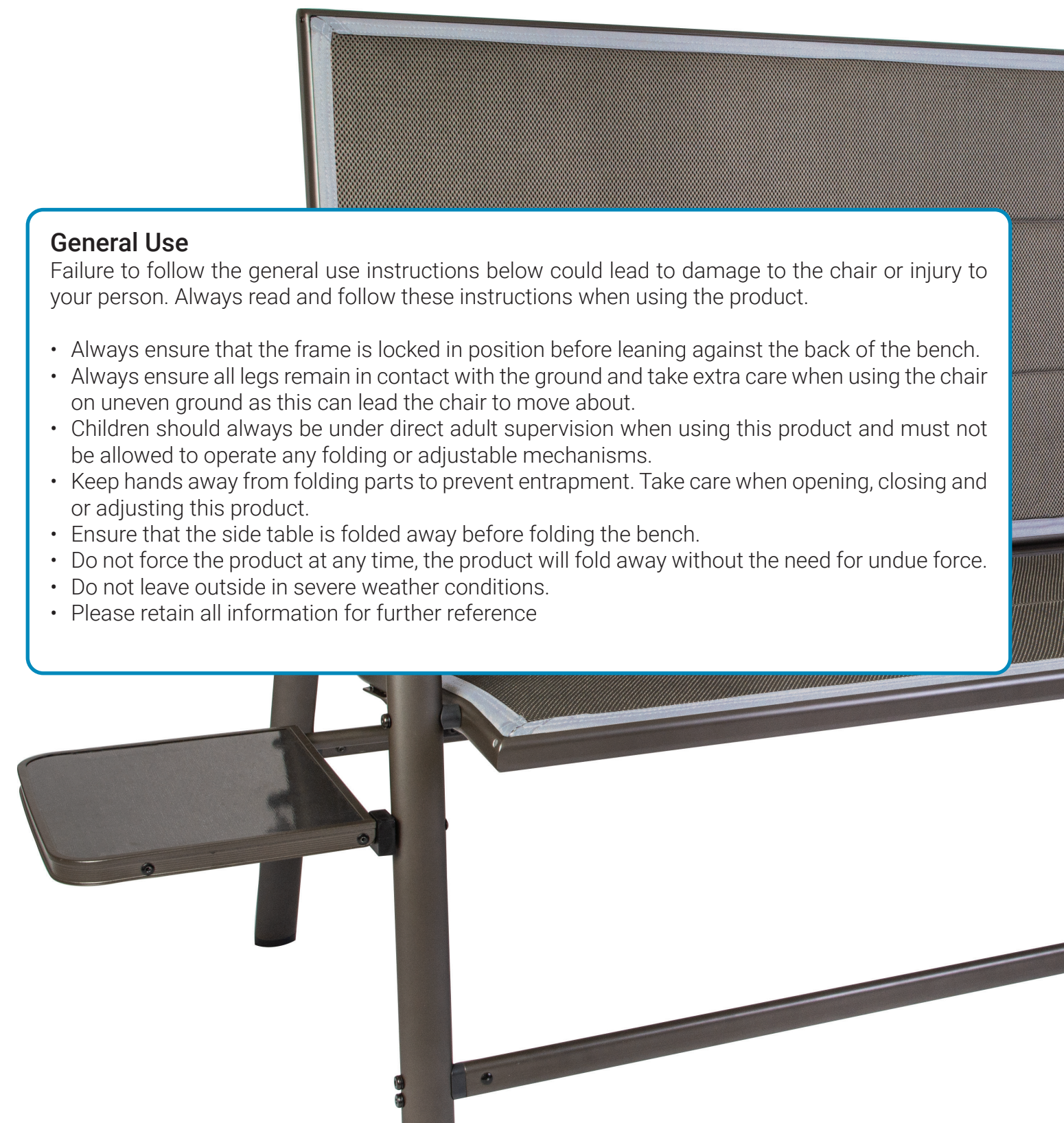
F1327 : Naples Pro bench full instructions

Thank you for purchasing this product. At Quest we take every care to ensure that the product fulfills your expectations. We hope you enjoy using this product.

General Use

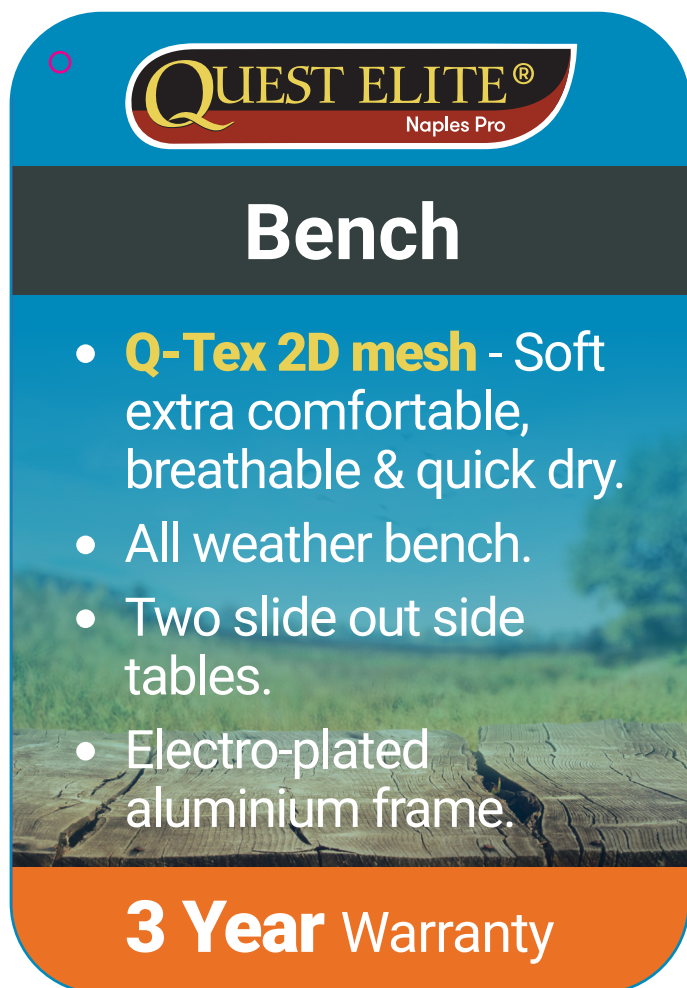
Failure to follow the general use instructions below could lead to damage to the chair or injury to your person. Always read and follow these instructions when using the product.

- Always ensure that the frame is locked in position before leaning against the back of the bench.
- Always ensure all legs remain in contact with the ground and take extra care when using the chair on uneven ground as this can lead the chair to move about.
- Children should always be under direct adult supervision when using this product and must not be allowed to operate any folding or adjustable mechanisms.
- Keep hands away from folding parts to prevent entrapment. Take care when opening, closing and or adjusting this product.
- Ensure that the side table is folded away before folding the bench.
- Do not force the product at any time, the product will fold away without the need for undue force.
- Do not leave outside in severe weather conditions.
- Please retain all information for further reference



F1327 : Naples Pro bench full instructions

Hang Tag Artwork : Below is a copy of the hang tag that came with your product. This is just for your reference and you should still keep the original that came with your product.



Quest Elite® Naples Pro range

Size: 117 x 64 x 96 cm or 167 x 64 x 96 cm (tables out)
 Seat Height: 43 cm. • Seat Width: 105 cm.
 Folded: 117 x 103 x 17 cm. • Weight: 10.4 kg.
 Max Load: 200 kg. (100kg per seat)
 Side Table Max Load: 5 kg.



Quest manual download site
www.questleisure.com/manuals

Full Instructions

Instructions, warranty and additional information can be found on the Quest manual download site by using the QR code or website URL above.

Warranty : 36 Months warranty.

www.questleisure.com

Bench
Code: F1327



5 055924 808756

F1327 : Naples Pro bench full instructions

Contents

No	Image	Description	Qty
A		Arm rest (R)	1
B		Arm rest (L)	1
C		Seat and back	1
D		Leg brace	2
E		Bolt (M6*85)	2
F		Bolt (M6*65)	10
G		Bolt (M6*58)	2
H		Washer (ST)	4
I		Nut (M6)	4
J		Bolt cap (M6)	16
K		Nut cap (M6)	4
L		Nut cap (M8)	2
M		Plastic washer (2.5H)	2
N		Plastic washer (9H)	2
O		Plastic washer (13H)	2
P		Allen key	1
Q		Spanner	1

Assembly

To assemble your Naples Pro two seater bench please follow these instructions.

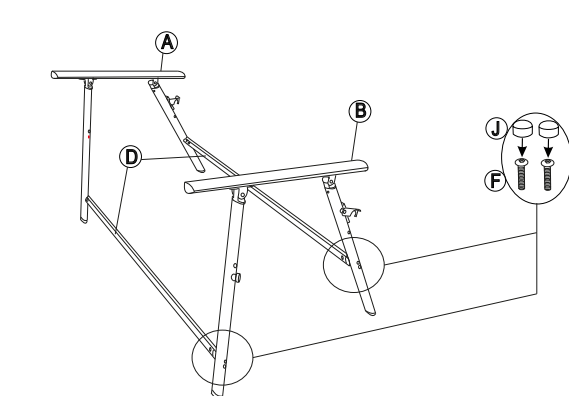


Figure 1

- Attaching the legs and support bars together.

Important

- Please note, that when doing step 3 you **MUST** ensure that the nut end of the bolt is on the outside and the allen key end is on the inside otherwise the bench will not open or close correctly.

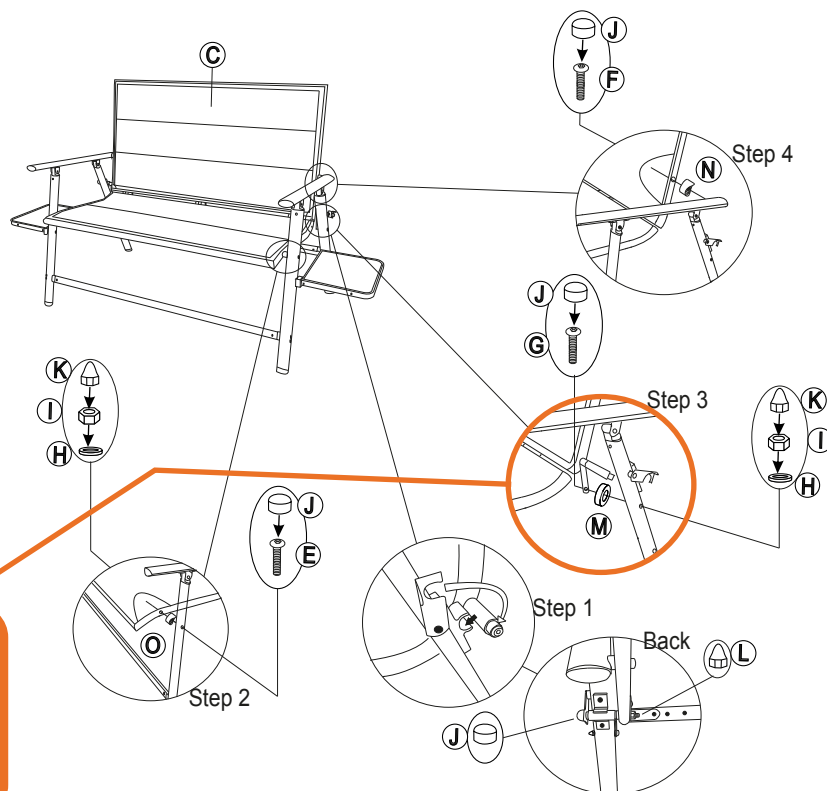


Figure 2

- Attaching the seat and side tables.

F1327 : Naples Pro bench full instructions

Folding and unfolding

To fold and unfold chair the bench follow the instructions below.

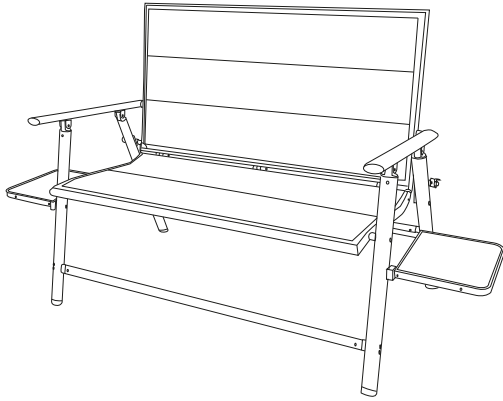


Figure 1

- Ensure that there is nothing on the chair or hindering the folding mechanism.

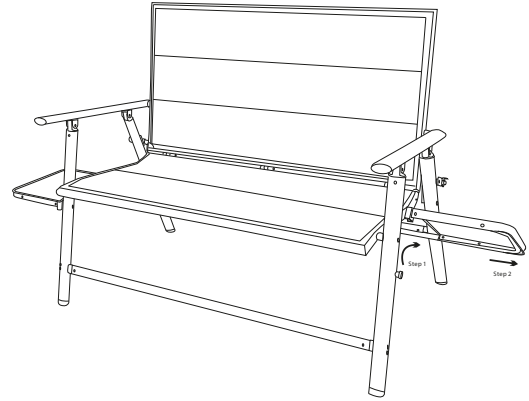


Figure 2

- Unclip one bench by lifting it up from the front.

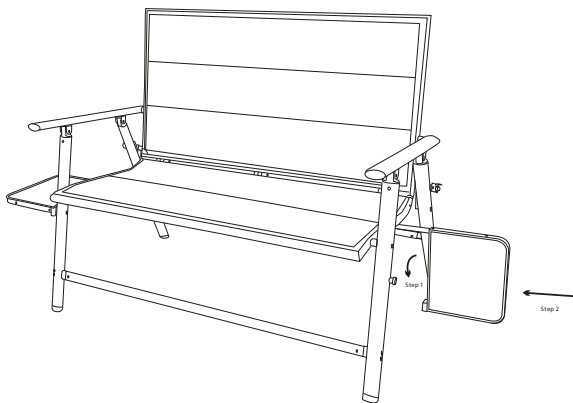


Figure 3

- Slide the side table underneath the bench seat as shown in the illustration above.

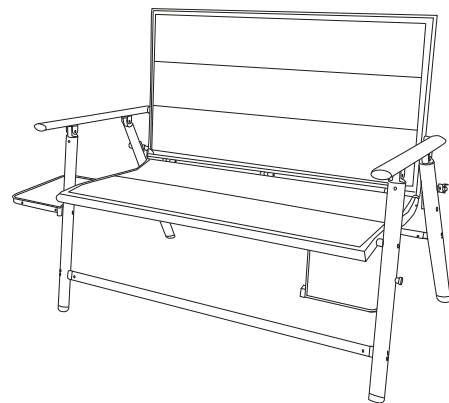


Figure 4

- Once the table is pushed underneath the bench, leave the table where it is and repeat with the other side table.

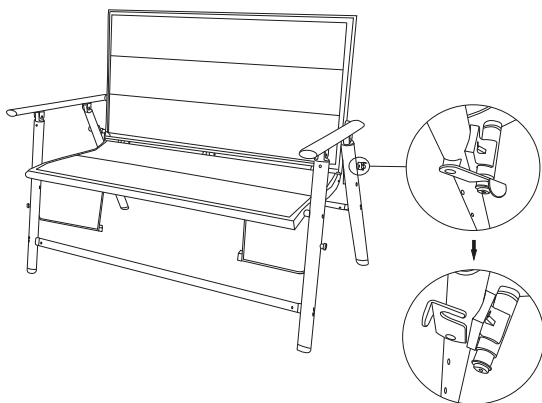


Figure 5

- Unlock both safety catches as shown in the illustration above. There are two catches, one on each side of the bench.

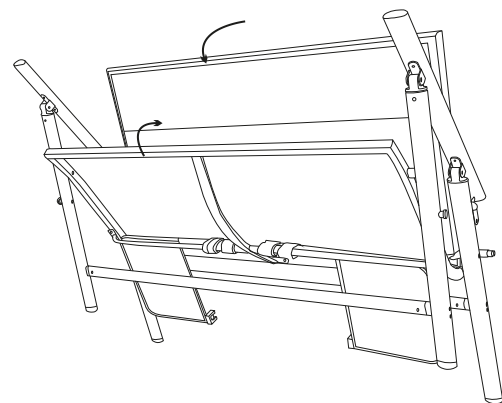


Figure 6

- Finally push the seat upwards and the back downwards and the bench will fold together.

F1327 : Naples Pro bench full instructions

Warranty : 36 Months (3 Years) warranty.

Warranty Claim

- In the unlikely event of a warranty claim, you must contact your retailer.
- If you have not registered your product, first fill out the registration form overleaf and take this with you when you go to your retailer.
- Take the product to your retailer that you purchased it from along with your proof of purchase and explain the issue with the retailer.
- The retailer will then check the product and get in touch with the wholesaler or manufacturer.
- The retailer will keep you informed of the progress of the claim.
- The wholesaler or manufacturer will not (unless under special circumstances) get in touch with you as all information will be passed back directly to the retailer.

Warranty Information

- This product comes with a full 36 month manufacturers defect warranty and covers any manufacturers defects for three (3) year from the date of the original purchase. It does not cover any damage occurred though:
 - The product falling or being dropped.
 - The product has been technically changed by the owner or another third party
 - Improper use of the product.
 - Normal wear and tear - which includes (but is not limited to): colour fading, wearing, stretching.
- The affected part will be replaced or repaired (manufacturers option) if they are found to be defective within the three (3) year time frame.
- The warranty will be void if the product has been subject to neglect, misuse, improper installation, misapplication, alteration or accident including, but not limited to, improper installation, maintenance or use of unauthorised parts or attachments.
- Damage caused by not following the instruction manual in full will invalidate the warranty, if this results in consequential damages, Quest will not be liable for these damages or any costs incurred due to these damages.
- Quest will not be liable for material damage or personal injury caused by improper use or if the safety instructions are not properly executed in full.
- All claims must be made through the retailer you purchased the product from and not direct with the wholesaler or manufacturer.
- Warranty claims cannot be honoured without an original dated receipt and or proof of purchase.
- By executing repairs the original warranty period of three (3) years will not be extended, nor the right to a complied new warranty. This warranty is only legal on European soil.
- This warranty does not overrule the European directive 2011/83/EU.
- This product may not be amended or changed.

F1327 : Naples Pro bench full instructions

*This Naples Pro chair is part of the **Quest Elite® Naples Pro** range of furniture. This range includes the following items that are matched with your product.*

Extra
Comfort
elastics

Exclusive
All weather
fabric

Exclusive
slide-out
table



Q-Tex 2D mesh

Breathable, cushioned, durability
and quick dry

Cat No F1323

Naples pro relax XL

- Premium, electro plated, lightweight aluminium frame • Adjustable padded head rest • Stepless, full recline
- All weather, breathable, cushioned, durable and quick dry Q-Tex 2D mesh stretch fabric.
- Size: 80 x 80 x 118 cm • Folded size: 80 x 15 x 95 cm • Seat height: 44 cm • Seat width: 57 cm
- Weight: 8.7 kg • Max load: 120 kg. • Side table max load: 5 kg.

F1327 : Naples Pro bench full instructions

*This Naples Pro chair is part of the **Quest Elite® Naples Pro** range of furniture. This range includes the following items that are matched with your product.*

Extra
Comfort
elastics

Exclusive
All weather
fabric

Exclusive
slide-out
table



Q-Tex 2D mesh

Breathable, cushioned, durability
and quick dry

Cat No F1322

Naples pro comfort

- Premium, electro plated, lightweight aluminium frame • Adjustable padded head rest • Comfort elastics
- All weather, breathable, cushioned, durable and quick dry Q-Tex 2D mesh stretch fabric.
- Size: 63 x 70 x 120 cm • Folded size: 61 x 11 x 120 cm • Seat height: 46 cm • Seat width: 52 cm
- Weight: 5.9 kg • Max load: 120 kg. • Side table max load: 5 kg.

F1327 : Naples Pro bench full instructions

*This Naples Pro chair is part of the **Quest Elite® Naples Pro** range of furniture. This range includes the following items that are matched with your product.*

Adjustable
Padded
head rest

Exclusive
All weather
fabric

Exclusive
slide-out
table



Q-Tex 2D mesh

Breathable, cushioned, durability
and quick dry

Cat No F1321

Naples pro recline

- Premium, electro plated, lightweight hybrid frame • Adjustable padded head rest • Lightweight recliner
- All weather, breathable, cushioned, durable and quick dry Q-Tex 2D mesh stretch fabric.
- Size: 59 x 69 x 114 cm • Folded size: 59 x 11 x 96 cm • Seat height: 44 cm • Seat width: 49 cm
- Weight: 6.1 kg • Max load: 120 kg • Side table max load: 5 kg.

F1327 : Naples Pro bench full instructions

*This Naples Pro chair is part of the **Quest Elite® Naples Pro** range of furniture. This range includes the following items that are matched with your product.*

Extra high
Easy to
use

Padded
for extra
comfort

Exclusive
slide-out
table



Q-Tex Padded
2D mesh

Breathable, padded, durability
and extra comfort

Cat No F133016ST

Naples pro lounge

- Premium, electro plated, lightweight hybrid frame • Adjustable padded head rest • Ultra lightweight
- Soft, breathable, padded for extra comfort, durable and quick dry Q-Tex 2D mesh stretch fabric.
- Size (when up): 70 x 175 x 100 cm • Size (when flat): 70 x 200 x 50 cm • Seat height: 50 cm
- Seat width: 66 cm • Folded: 70 x 20 x 82 cm • Weight: 6.3kg • Max load: 120kg • Side table max load: 5 kg.

F1327 : Naples Pro bench full instructions

*This Naples Pro chair is part of the **Quest Elite® Naples Pro** range of furniture. This range includes the following items that are matched with your product.*

Exclusive
All weather
fabric

Extremely
light
weight



Q-Tex 2D mesh

Breathable, cushioned, durability
and quick dry

Cat No F1325

Naples pro rest

- Premium, electro plated, lightweight aluminium frame • Ultra lightweight • Turns your chair into a lounger
- All weather, breathable, cushioned, durable and quick dry Q-Tex 2D mesh stretch fabric.
- Size: 48 x 85 x 35 cm • Height: 44 cm • Folded size: 48 x 85 x 9 cm
- Weight: 1.23 kg • Max load: 30 kg.

F1327 : Naples Pro bench full instructions

*This Naples Pro chair is part of the **Quest Elite® Naples Pro** range of furniture. This range includes the following items that are matched with your product.*

All weather
Aluminium
frame

Exclusive
All weather
fabric

Exclusive
slide-out
tables



Q-Tex 2D mesh

Breathable, cushioned, durability
and quick dry

Cat No F1327

Naples pro bench

- Premium, electro plated, lightweight aluminium frame • Folds flat • Double slide out side tables
- All weather, breathable, cushioned, durable and quick dry Q-Tex 2D mesh stretch fabric.
- Seat height: 43cm. • Seat width: 105cm. • Size: 167 x 64 x 96cm. • Folded: 117 x 103 x 17cm.
- Weight: 10.4 kg • Max load: 200 (100 per seat) kg.

F1327 : Naples Pro bench full instructions

*This Naples Pro chair is part of the **Quest Elite® Naples Pro** range of furniture. This range includes the following items that are matched with your product.*



Cat No F1326

Naples pro swing

- Premium, electro plated, strong and stable steel frame • Adjustable canopy, U.V. coated for added protection
- Soft, breathable, padded for extra comfort, durable and quick dry Q-Tex 2D mesh stretch fabric.
- Seat height: 55 cm. • Seat width: 55 cm (each) : 153 cm (total). • Size: 195 x 125 x 170 cm.
- Max load: 210 (70 per seat) kg.

F1327 : Naples Pro bench full instructions

Along with the other items in the Naples Pro range there are other optional accessories available for your product.



Cat No 124900

Quest Elite® furniture bag

- New improved colour and more durable material
- Premium quality
- Complete with its own carry bag
- Can fit multiple chairs in one bag • Universal use
- Fabric: 600D Fabric • Size: 67 x 18 x 113 cm
- Weight: 1.1 kg



Cat No 118914DP

Clamp on sun shade

- Adjustable position • U.V. protection
- Universal use • Anti glare • Can be used on chairs, tables, prams, push chairs and more
- Canopy radius: 68.5 cm • Height: 105 cm
- Folded size: 7 x 7 x 94 cm
- Weight: 0.3 kg.



Cat No 124901

Quest Elite spare elastics

- Elasticated cord • Metal end caps
- Fits all relax and comfort chairs
- QTY: 4 cords (2 different lengths)
- Length: 36 inches and 72 inches



...outdoor leisure, home & garden



www.twitter.com/questleisure



www.facebook.com/questleisure



www.youtube.com/questleisure

Email: info@questleisure.com • **Web:** www.questleisure.com