



Welcome
to your instructions

SP2112 : Home is where you tow it front cover

SP2112 : Home is where you tow it front cover full instructions

Thank you for purchasing this product. At Quest we take every care to ensure that the product fulfils your expectations. We hope you enjoy using this product.

General Use



This product is not a toy and should never be used by children. Always ensure it is correctly fastened and tightened before use and check the LED lights work before driving.

- Please keep these instructions, the sales receipt and, if possible, the carton along with all the inner packaging in case it is needed in the future.
- Please read the instruction manual carefully before using the product.
- This product is not intended to be used by persons (including children) with reduced physical, sensory or mental capabilities, or lack of experience and knowledge, unless they have been given supervision or instructions concerning the use of the product by a person that is responsible for their safety.
- By ignoring the safety instructions the manufacturer can not be hold responsible for any damage or injury caused by the product.
- Keeping this product clean will increase its life span and avoid unnecessary wear.
- Make sure that the product is stored in a dry environment.
- Do not use this product with a damaged strap or when the product has been damaged as this damage to expand when in use and cause the product to fail whilst in use.
- All repairs should be made by a competent qualified repair service. Do not repair this product yourself.
- Children shall not play with the product.

Quest manual download site

The quest manual download site can be found at the url or the QR code below



<http://www.questleisure.com/manuals>.

SP2112 : Home is where you tow it front cover full instructions

Storage

To help keep your product looking newer for longer and prolong the life and use of the product, we recommend that the product is kept in a storage box or similar when not in use.

If the product is not going to be used for an extended period (such as a winter period) we recommend that it is carefully folded away and stored in a clean, dry and free from damp location.

Care and Cleaning Instructions

Never use and harsh or abrasive cleaners or brushes when cleaning this product as the fabric may be damaged when doing so.

Never fold and put the product away when wet as this can trap water in the product, which can lead to mould and mildew build up.

- First allow the product to fully dry.
- Then using a soft brush to avoid damage, brush any loose dirt off the fabric.
- Once this has been done we recommend using a dedicated fabric cleaner for the fabric, if one is not available simply warm soapy water. After it has been cleaned, rinse with clean water to make sure there's no soap or cleaner left inside the fabric. Once rinsed allow the product to dry naturally before folding away and storing.

Attaching the Cover

- Take the cover out of its carry bag and locate the top left corner. (TIP: Use the printed logo on the front to ensure you have the cover the right way around)
- Feed the first beading strip on the left hand side of the cover into the awning rail on the left.
- Then feed the first beading on the right hand side of the cover into the awning rail on the right.
- Repeat this for all of the beading strips until the caravan cover is in place.
- Then tighten the straps on the left and right hand side of the cover. These should be pulled tight and the excess material is folded up behind the straps to protect your caravan.
- Then tie each strap as shown in the image to the side. This knot should be right behind the strap buckle adjustment to help lock the buckle in place to ensure it cannot become loose during travel.
- Ensure the lights are on and working before moving away.



SP2112 : Home is where you tow it front cover full instructions

Warranty : 12 Months (1 Year) warranty.

Warranty Claim

- In the unlikely event of a warranty claim, you must contact your retailer.
- If you have not registered your product, first fill out the registration form overleaf and take this with you when you go to your retailer.
- Take the product to your retailer that you purchased it from along with your proof of purchase and explain the issue with the retailer.
- The retailer will then check the product and get in touch with the wholesaler or manufacturer.
- The retailer will keep you informed of the progress of the claim.
- The wholesaler or manufacturer will not (unless under special circumstances) get in touch with you as all information will be passed back directly to the retailer.

Warranty Information

- This product comes with a full 12 month manufacturers defect warranty and covers any manufacturers defects for one (1) year from the date of the original purchase. It does not cover any damage occurred though:
 - The product falling, being dropped, scratched or damaged in any way.
 - The product has been technically changed by the owner or another third party
 - Improper use of the product.
 - Normal wear and tear - which includes (but is not limited to): colour fading, wearing, stretching.
 - Weather damage - which includes (but is not limited to) U.V. degradation and colour changing.
- The affected part will be replaced or repaired (manufacturers option) if they are found to be defective within the one (1) year time frame.
- The warranty will be void if the product has been subject to neglect, misuse, improper installation, misapplication, alteration or accident including, but not limited to, improper installation, maintenance or use of unauthorised parts or attachments.
- Damage caused by not following the instruction manual in full will invalidate the warranty, if this results in consequential damages, Quest will not be liable for these damages or any costs incurred due to these damages.
- Quest will not be liable for material damage or personal injury caused by improper use or if the safety instructions are not properly executed in full.
- All claims must be made though the retailer you purchased the product from and not direct with the wholesaler or manufacturer.
- Warranty claims cannot be honoured without an original dated receipt and or proof of purchase.
- By executing repairs the original warranty period of one (1) year will not be extended, nor the right to a complied new warranty. This warranty is only legal on European soil.
- This warranty does not overrule the European directive 2011/83/EU.
- This product may not be amended or changed.

SP2112 : Home is where you tow it front cover full instructions

*This product is part of the **Quest** caravan accessory range. This range includes the following items that are matched with your product.*

200 KG
max load

5 Year
Warranty



Cat No C024

Westfield Outdoors Premium Double Step

- Electro plated aluminium frame • Anti slip steps • Solid construction gives class leading 200kg max load
- Class leading 5 year warranty • Includes removable handrail that can be mounted on either side
- Size: 80 x 47 x 117 cm • Handrail height: 117 cm • Step heights: 20 and 37 cm
- Weight: 5.7 kg • Max load: 200 kg.

SP2112 : Home is where you tow it front cover full instructions

*This product is part of the **Quest** caravan accessory range. This range includes the following items that are matched with your product.*



Cat No C020

Single Step

- Powder coated steel frame • Anti Slip top • Anti sink cross bars • Non slip feet
- Frame colour designed to match with caravans and motor homes
- Size: 25 x 30 x 38 cm • Step height: 25 cm • Weight: 2.3 kg

SP2112 : Home is where you tow it front cover full instructions

*This product is part of the **Quest** caravan accessory range. This range includes the following items that are matched with your product.*



Cat No C021

Double Step

- Powder coated steel frame • Anti Slip top • Anti sink cross bars • Non slip feet
- Frame colour designed to match with caravans and motor homes
- Size: 65 x 44 x 38 cm • Step heights: 18 and 38 cm • Weight: 3.5 kg

SP2112 : Home is where you tow it front cover full instructions

*This product is part of the **Quest** caravan accessory range. This range includes the following items that are matched with your product.*



Cat No C022

Double Step with Handrail

- Powder coated steel frame • Anti Slip top • Anti sink cross bars • Non slip feet
- Frame colour designed to match with caravans and motor homes
- Includes removable handrail that can be mounted on either side
- Size: 65 x 44 x 110 cm • Step heights: 18 and 38 cm • Handrail height: 110 cm. • Weight: 4 kg

SP2112 : Home is where you tow it front cover full instructions

*This product is part of the **Quest** caravan accessory range. This range includes the following items that are matched with your product.*



Cat No 4342G - 4347G

Caravan Cover

- Green colour for acceptance on all sites • Includes free hitch cover • Breathable • Heavy Duty 3-Ply
- **4342G**: 360 - 420 cm (11'9" - 13'9") • **4343G**: 420 - 510 cm (13'9" - 16'8") • **4344G**: 510 - 570 cm (16'8" - 18'8")
- **4345G**: 570 - 630 cm (18'8" - 20'8") • **4346G**: 630 - 690 cm (20'8" - 22'7") • **4347G**: 690 - 750 cm (22'7" - 24'7")

SP2112 : Home is where you tow it front cover full instructions

*This product is part of the **Quest** caravan accessory range. This range includes the following items that are matched with your product.*



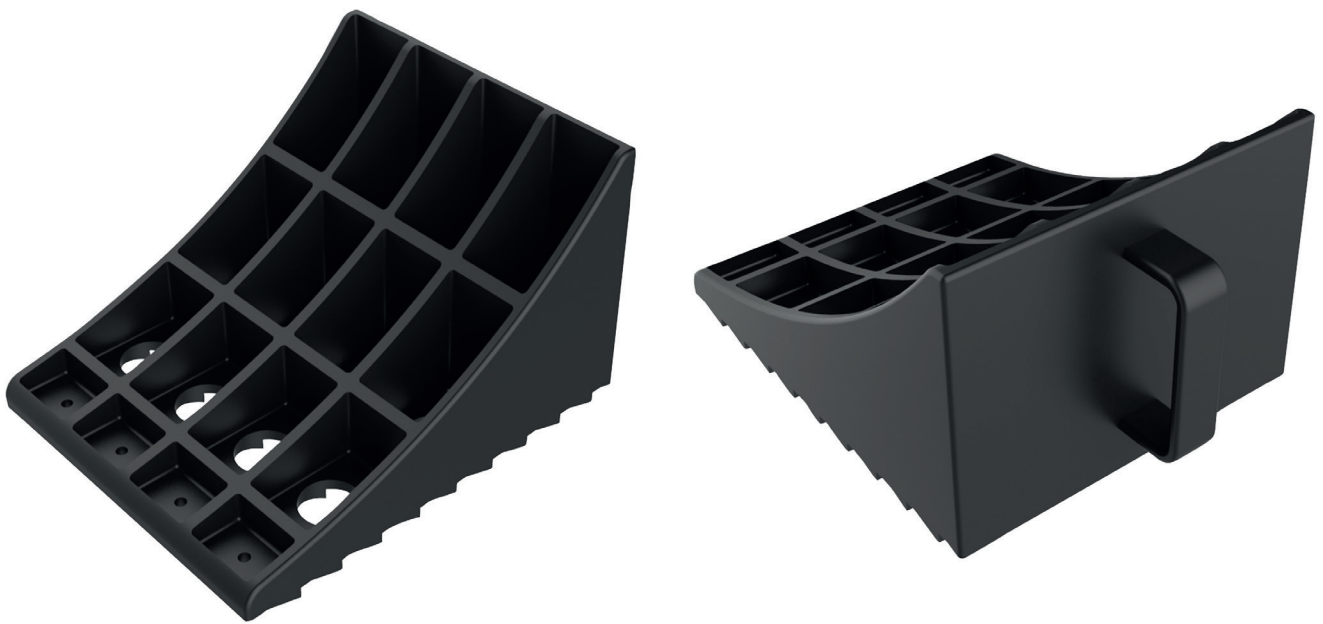
Cat No C1000

Caravan Jack Pads

- Easy to use • Premium quality • Extra strong metal pin • Metal locking pin helps longer use
- Size: 18 x 14 x 4.5 cm (each pad). • Total weight: 1.04 kg (all 4 pads).

SP2112 : Home is where you tow it front cover full instructions

*This product is part of the **Quest** caravan accessory range. This range includes the following items that are matched with your product.*



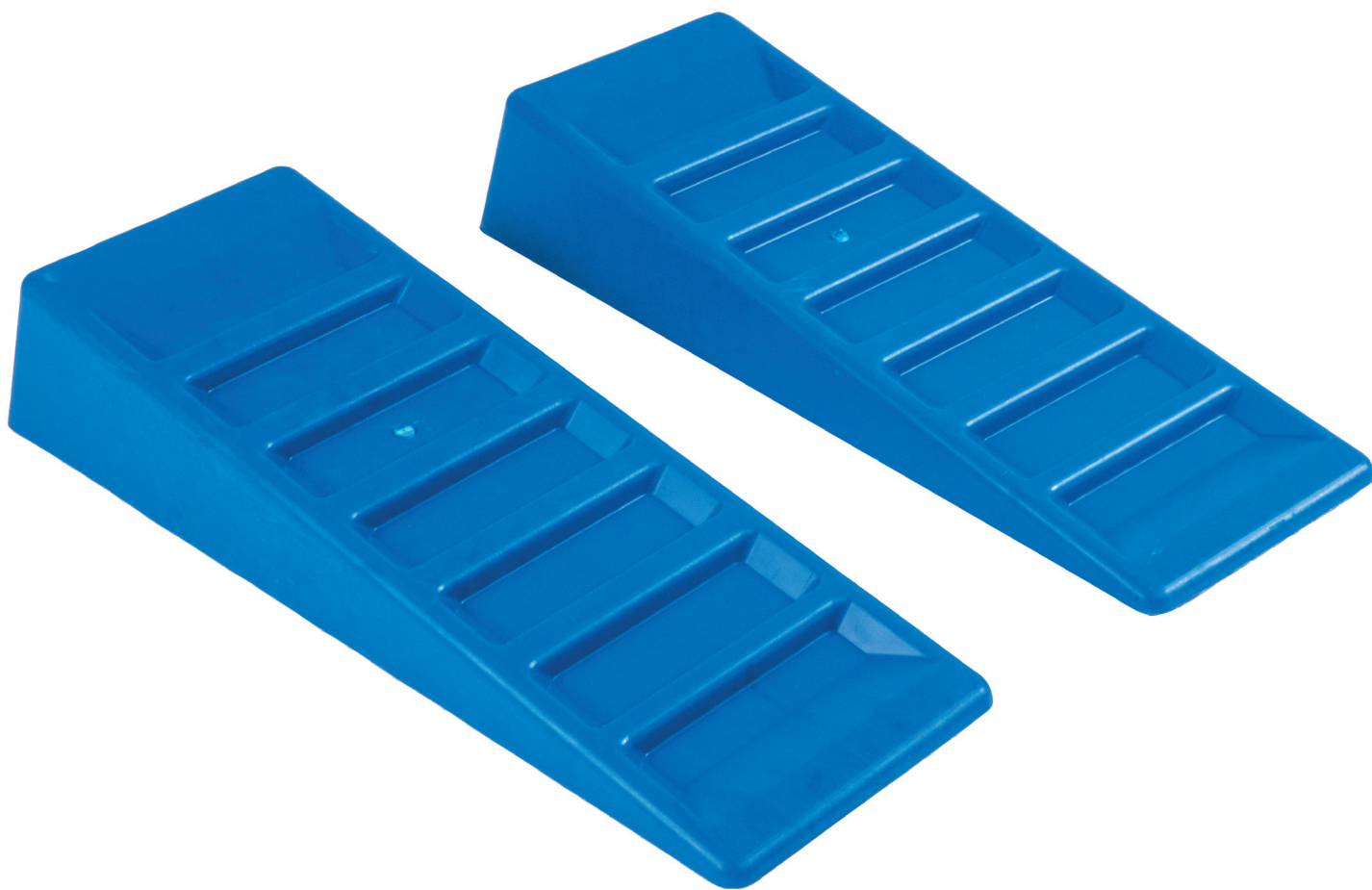
Cat No C1001

Wheel Chocks (pair)

- Easy to use • High quality • Solid construction • Light weight • Anti-slip base
- Size: 19 x 10 x 9 cm (each chock). • Total packed size: 23 x 10 x 10 cm (both chocks).
- Total weight: 0.41 kg.

SP2112 : Home is where you tow it front cover full instructions

*This product is part of the **Quest** caravan accessory range. This range includes the following items that are matched with your product.*



Cat No C1004

Levelling Ramps (pair)

- Easy to use • High quality • Solid construction • Light weight • Bright colour to make easier to see
- Size: 42 x 8 x 14.5 cm (each ramp). • Total packed size: 42 x 8 x 16 cm (both ramps).
- Total weight: 1.19 kg. • Max load: 3048 kg (3 tonnes)

SP2112 : Home is where you tow it front cover full instructions

*This product is part of the **Quest** caravan accessory range. This range includes the following items that are matched with your product.*



Cat No C1008

Large Multi-level Ramps (pair)

- Easy to use • High quality • Solid construction • Light weight • Bright colour to make easier to see
- Carry Bag • Multi levels for added adjustability
- Size: 61 x 12.5 x 21.5 cm (each ramp). • Total packed size: 61 x 12.5 x 25 cm (both ramps).
- Total weight: 2.27 kg. • Max load: 5080 kg (5 tonnes)

SP2112 : Home is where you tow it front cover full instructions

*This product is part of the **Quest** caravan accessory range. This range includes the following items that are matched with your product.*



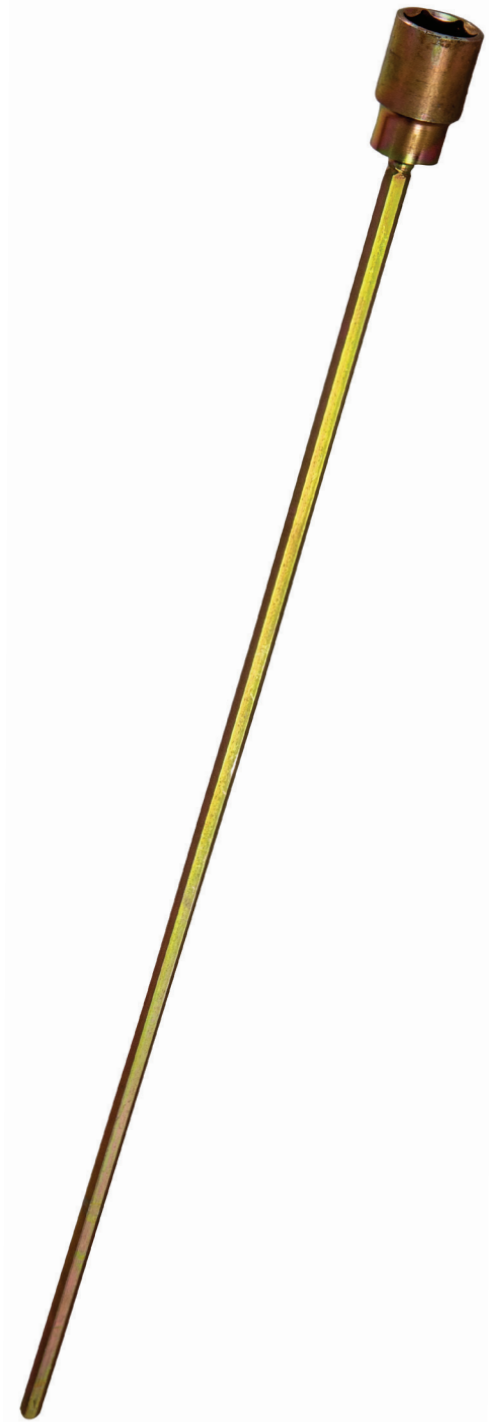
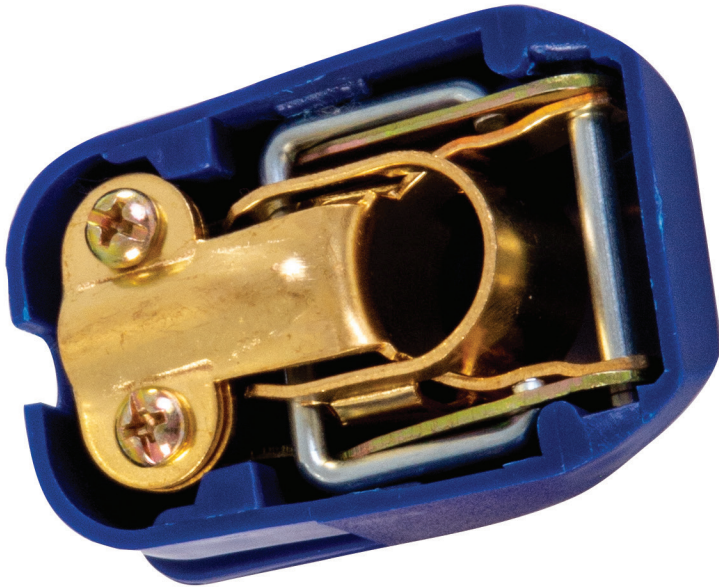
Cat No C1009

9 Piece levelling brick starter pack

- Easy to use • Stackable • Solid construction • Light weight • Bright colour to make easier to see
- Carry Bag • Comes with 7 stackable full plates, 1 half plate and 1 chock
- Chock Size: 21 x 12 x 21 cm. • Plate size: 21 x 21 x 3 cm.
- Total Packed Size: 21 x 21 x 30 cm. • Total weight: 2.61kg

SP2112 : Home is where you tow it front cover full instructions

*This product is part of the **Quest** caravan accessory range. This range includes the following items that are matched with your product.*



Cat No C1003 & C1005

- **C1005** : QR Clamps : Easy to use • Quick release • Snap on and off
- **C1003** : Socket • Adjust your caravan feet easier • Universal use • Extra long shaft to make it even easier
- 19mm Socket • 30 cm Shaft.

Clamps and Socket Extensions



...outdoor leisure, home & garden

Email: info@questleisure.com • **Web:** www.questleisure.com



www.twitter.com/questleisure



www.facebook.com/questleisure



www.youtube.com/questleisure