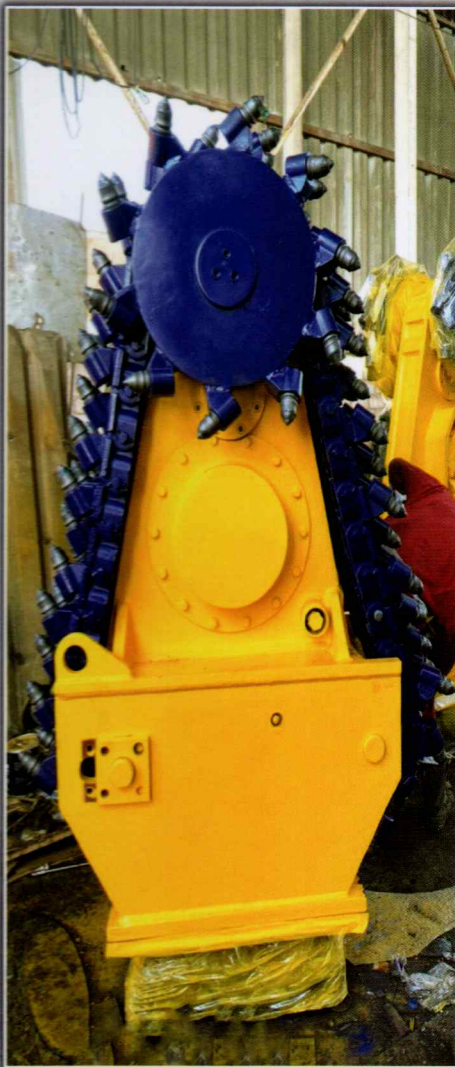




# AL MAHAD ENGINEERING

**Specialized in Manufacturing of Hydraulic Attachments**



**High Productivity > High Performance > High Profitability**

[www.almaahadeng.com](http://www.almaahadeng.com)



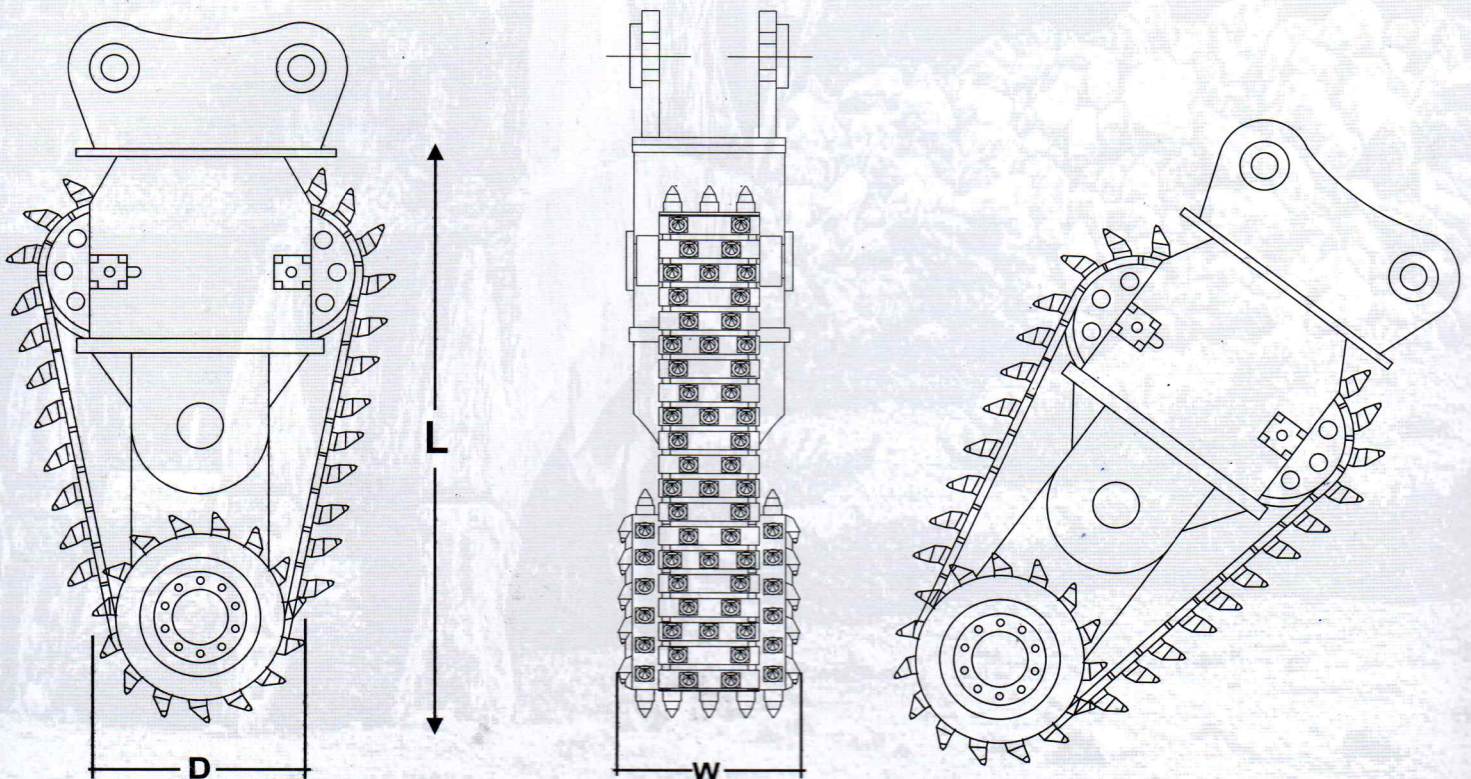
Chain Drum Cutter uses world-class hydraulic technology and it's uniquely designed to give a maximum cutting performance with minimum wear costs.

High torque hydraulic motors drive extremely large super gears to turn the chain drums. The gear wheels are so robust the drum cutters can be used in the most difficult conditions without the risk of failure.

This Hydraulic Attachment is ideal for cutting stone with a uniaxial compressive strength up to 160 Mpa.

## Technical Specification

Model		DC 8	DC 10	DC 20	DC 30	DC 40	DC 50	DC 70	DC 100
Suitable Excavator	Ton	6 - 10	10 - 17	18 - 30	27 - 40	35 - 50	45 - 60	60 - 85	80 - 125
Rated Power	Kw	45	64	100	130	170	200	280	420
Required Oil Flow	L/Min	60 - 80	120 - 140	180 - 220	240 - 280	280 - 320	320 - 360	420 - 540	720 - 940
Max Oil Flow at 10 Bar	L/MIN	110	160	280	340	400	440	580	1000
Rotation Speed	RPM	75	80	70	65	60	67	56	52
Max Operating Pressure	BAR	350	350	400	400	400	400	400	400
Max Torque at 350 Bar	Nm	6,500	12,400	21,000	25,000	35,000	42,000	72,000	121,700
Max Cutting Force at 350 Bar	Nm	21,000	29,400	50,000	68,000	82,000	110,000	148,000	250,000
Max Rock Hardness	MPa	30	50	80	90	100	120	140	160
Drum Cutter Length	mm	1,500	1,900	2,000	2,000	2,100	2,200	2,400	2,500
Diameter of Cutting Head	mm	600	750	800	800	850	850	1,000	1,100
Width of Cutting Head	mm	500	600	600 - 700 - 800	600 - 700 - 800	800 - 900 - 1,000	800 - 900 - 1,000	900 - 1,000 - 1,100	1,000 - 1,100 - 1,200
Operating Weight	Kg	950	1,800	2,700 - 2,900	3,000 - 3,200	3,400 - 3,600	3,800 - 4,000	4,700 - 5,000	6,000 - 6,400
Number of picks in cutter drums	pcs	20	20	20 - 32 - 40	20 - 32 - 40	40 - 54 - 60	42 - 56 - 62	48 - 57 - 65	57 - 66 - 74
Number of picks in the cutter chain	pcs	54	57	94	94	95	95	100	108





## Features

Extremely Robust Spur Gears  
No Daily Lubrication Required  
Low Noise and Low Vibration  
Protection For Hydraulic Hoses  
Range of Cutting Widths is Available  
Ability To Cut Deep and Narrow Trenches  
Highest Productivity and Efficiency For Crushing Rocks  
Underwater Operation Without Needing any Modifications

## Applications

Mining  
Demolition  
Wall Profiling  
Rock Excavation  
Underwater Works  
Special Foundation  
Trenching and Pipeline Works  
Tunnel & Channel Construction

## Productivity

Compare to other Hydraulic Attachments, The DC Chain Drum Cutter has the Highest Productivity for Crushing Rocks with a Hardness up to 160 MPa

The DC Chain Drum Cutter Productivity is Two Times More Than a Double Drum Cutter.

And the main reason is the chain cutter, because between the drum is fully covered with a chain cutter, And there is not any free space in the cutting head,  
That's why it has two times more productivity than a double drum cutter, at any application.

Also, the productivity of a chain drum cutter depends to a large extent on the uniaxial compressive strength of the material to be cut. The deeper the pick can be forced into the rock, the more materials it can crush out from it.

The Hydraulic pressure and oil flow that the excavator is able to provide to the chain drum cutter combined with excavator weight and stability is also critical factors influencing productivity.

## After Sales Service

As a client, you don't need to worry about the spare parts, tips and adaptors and any other consumable items.

If the operator of the excavator doesn't know how to work with this Hydraulic Attachment, We will provide a full training video of how to do Installation, connecting the hydraulic lines, and start working.

Al Mahad Engineering will provide and a list of the spare parts, and consumable items and parts manual for the customer needs.

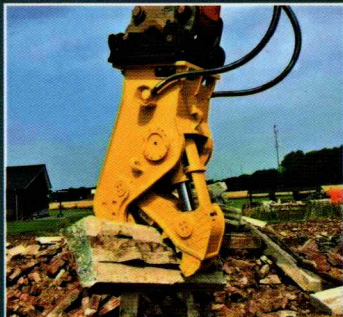
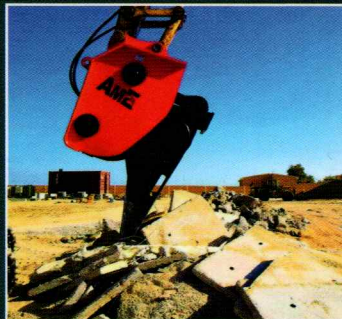
All of the parts are ready at the stock and will be sent to the clients anytime, anywhere.





# AL MAHAD ENGINEERING

We are Manufacturer of High-Performance  
Hydraulic Attachments for Excavators from 6 To 125 Tons.



**Contact us**

**General Manager:** +971 55 9380360, **Marketing Manager:** +971 55 938 0669

**Factory Tel:** +971 6 5317757, Al Saja'a, P.O. Box: 69133 - Sharjah, U.A.E.

**E-mail:** [info@almaahadeng.com](mailto:info@almaahadeng.com), **Website:** [almaahadeng.com](http://almaahadeng.com)