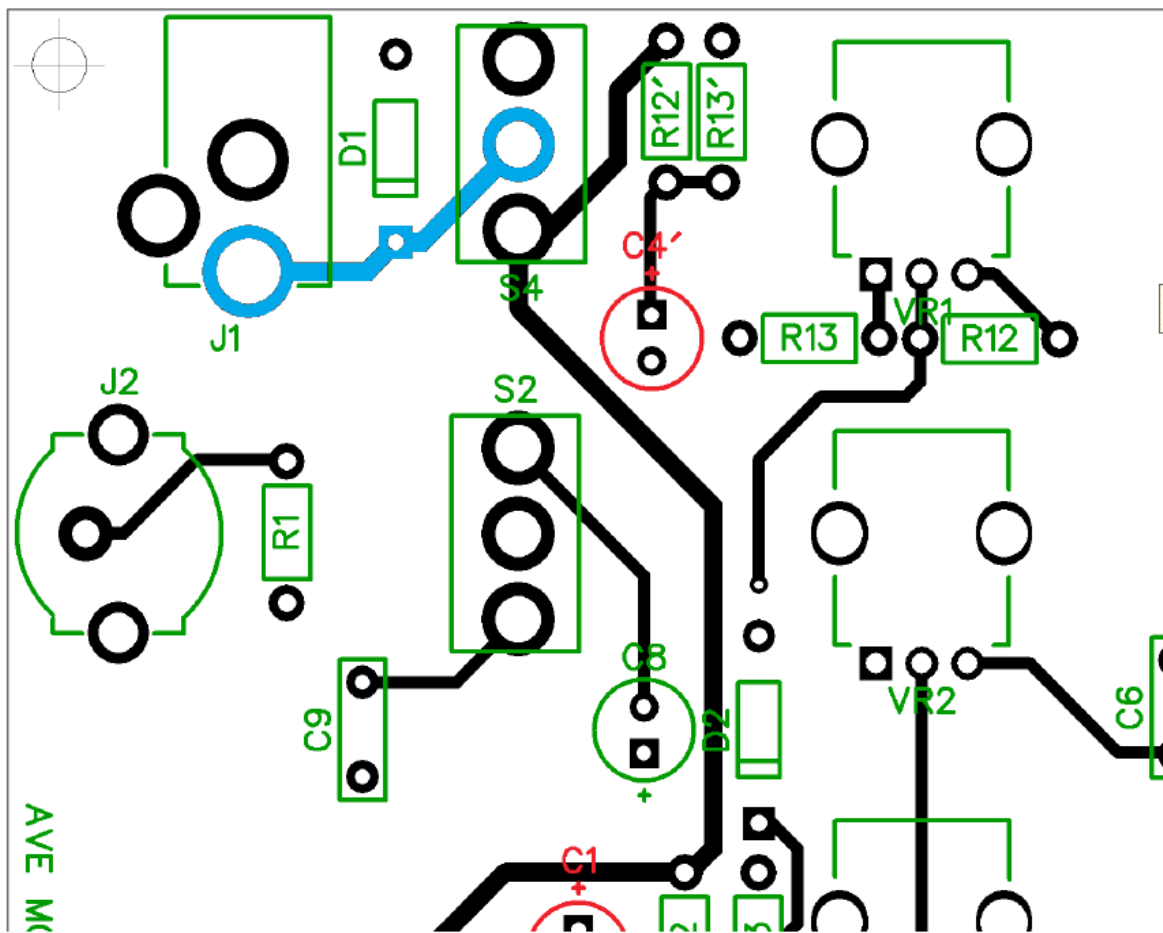


Diode fix :

The purpose of D1 was originally to protect the circuit from reverse voltage from a center negative power supply, but the type of diode and configuration is wrong on V2.1 / V2.2 (fixed in V2.3).

- First remove D1.
- Then cut the trace (shown in blue), using something small and sharp, a few mm deep, be careful for your fingers and also other traces around. Using a multimeter in continuity mode (beeps once the 2 probes are in direct contact), and check for no continuity (no beep) on the trace you just cut.



- Finally, solder a 1N4001 diode (it's quite common, any 1N400x will do), between the power connector pin and the middle pin of the ON/OFF switch, with the cathode pointing toward the switch

