



JURASSIC OCEANS

MONSTERS OF THE DEEP

N NATURAL
HISTORY
MUSEUM

WHAT TO EXPECT

Jurassic Oceans: Monsters of the Deep is an adventurous journey beneath the waves to meet the fascinating creatures that inhabited the world's Jurassic seas millions of years ago, when dinosaurs ruled the land. Visitors will have the chance to explore a prehistoric marine environment like never before, and will come face-to-face with some of the most fearsome predators the world as ever seen.

AT A GLANCE

- An immersive family experience including CGI films and interactives
- Over 100 remarkable specimens and models
- Curated by the scientists of the Natural History Museum
- An exceptional learning opportunity for all ages
- Fully turnkey

The setworks were designed in partnership with The Field Museum, Chicago where the exhibition will open in 2020.

WATCH THE TRAILER

KEY EXHIBITION THEMES AND MESSAGES

- Giant marine reptiles dominated the seas at a time when dinosaurs ruled the land
- Marine reptiles evolved from land-dwelling reptiles
- Specially adapted to life in the Jurassic seas, *ichthyosaurs* and *plesiosaurs* became the top marine predators
- Most marine reptile groups eventually became extinct, but some still survive today, such as turtles and crocodiles
- Following the mass extinctions that wiped out the Jurassic marine reptiles, mammals filled the gap by moving into every ecological niche and evolved into today's ocean giants



EXHIBITION SECTIONS

ENTRANCE



1. DIVE INTO THE JURASSIC

The Jurassic's warm, relatively shallow seas were the perfect environment for large predators to flourish, but they had to weather wild storms.

2. ANCIENT JAWS

During the Jurassic, sharks were not at the top of the food chain but they were just as important to the oceans as they are today.

3. SOMETHING FISHY IN THE WATER

In the nutrient-rich waters of the Jurassic, fish thrived and some evolved to be enormous in size.

4. REIGN OF THE REPTILES

The Jurassic seas were home to an array of large and extraordinary marine reptiles, quite different from those we know today.

5. T. REX OF THE SEA

At the end of the Jurassic, a mass extinction wiped out many marine reptiles, allowing the formidable mosasaurs to dominate the seas.

6. MARINE REPTILES TODAY

Although they are much less diverse, marine reptiles still exist, and they are just as fascinating as their Jurassic ancestors.

7. TODAY'S OCEAN GIANTS

Marine reptiles, large predatory fish, and sharks still exist in today's seas and oceans, but it is the mammals that have triumphed to evolve into ocean giants.

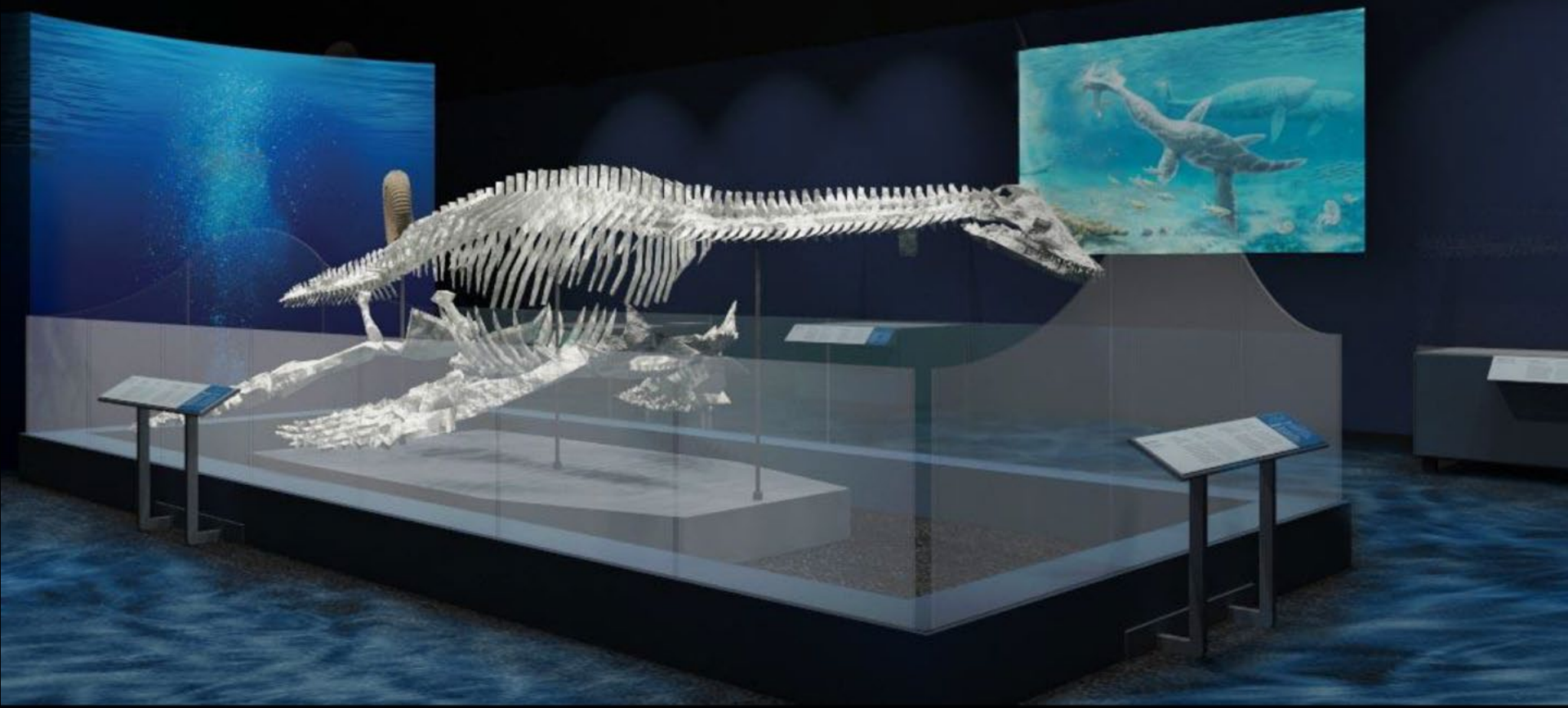
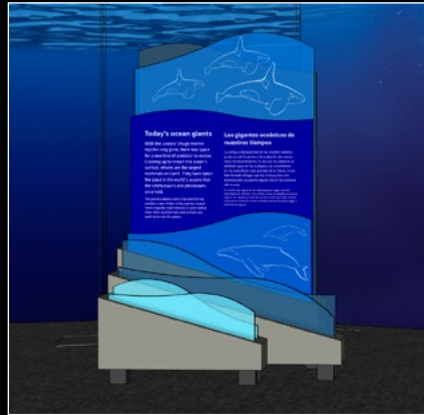
EXIT



EXHIBITION OVERVIEW

LOOK AND FEEL

Setworks and designs created by
Field Museum in partnership with the
Natural History Museum, London



KEY FOSSIL SPECIMENS

- Full-size, never-before-mounted Longnecked *Plesiosaur*
- A rare, preserved Jurassic *Hybodus* shark, that is 174 million years old
- Size yourself against the biggest fish in the Jurassic – *Leedsichthys*, whose tail is 3 metres tall!



Pterosaur



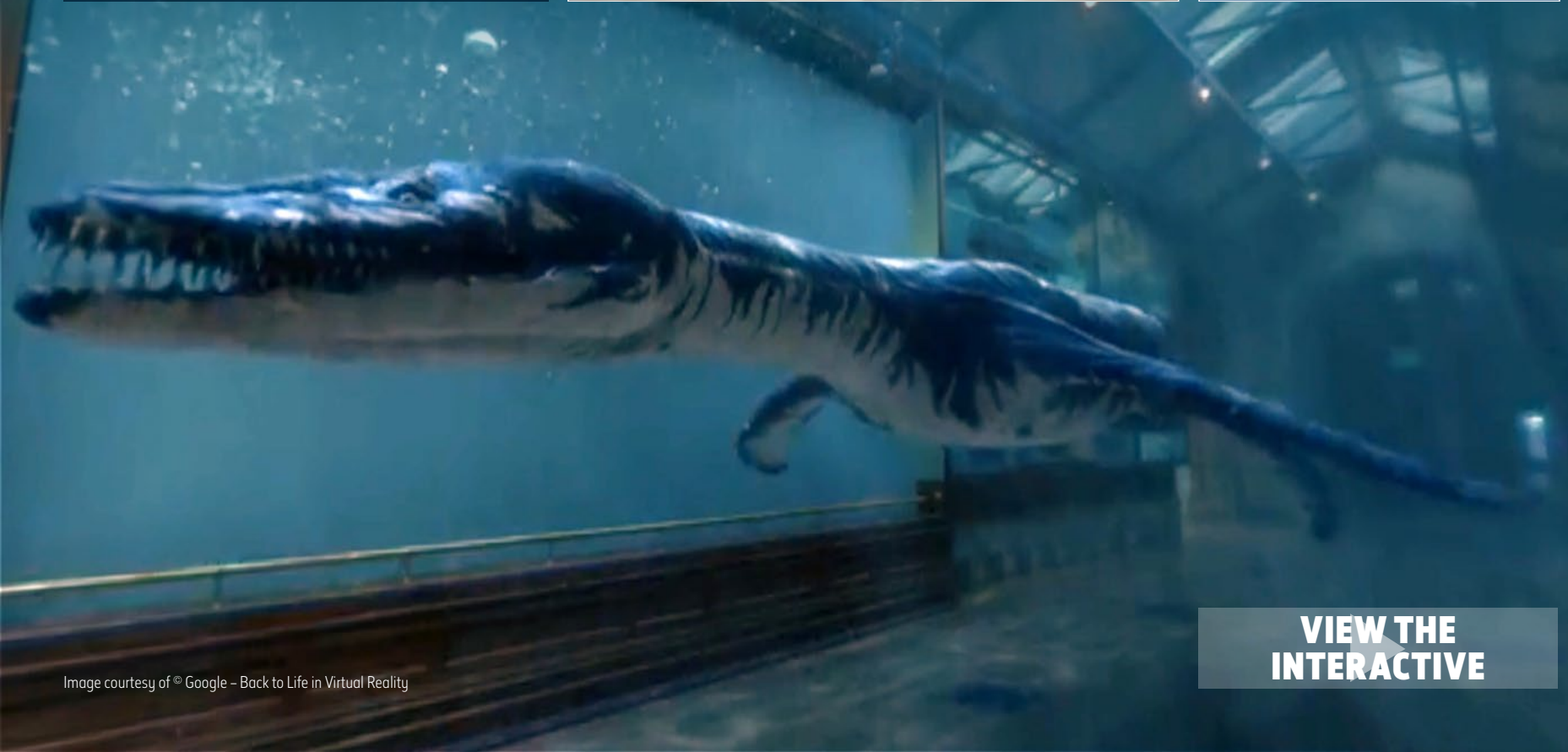
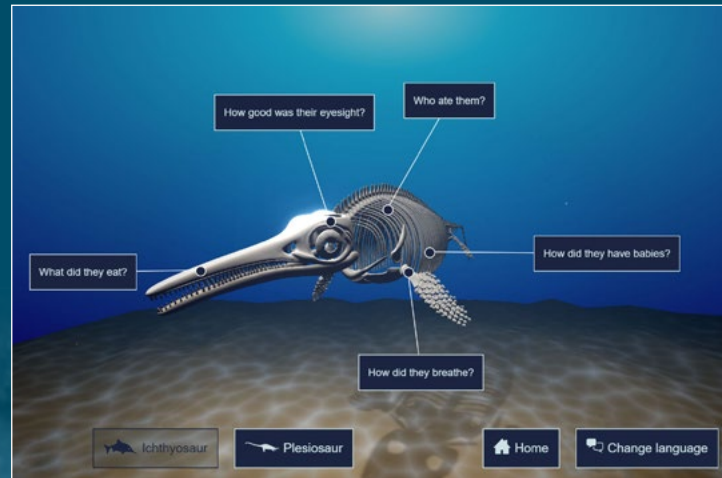
Hybodus Shark

Dorudon cast at the Bahrain National Museum

WATCH THE VIDEO

DIGITAL MEDIA AND INTERACTIVES

- Four captivating CGI films and 7 other media experiences
- Find out the Fierce Factor of Jurassic creatures – how strong and fast were they?
- Interactive *Liopleurodon* and Marine Reptiles discovery screens
- *Plesiosaur* flipper interactive station – how does your hand compare?

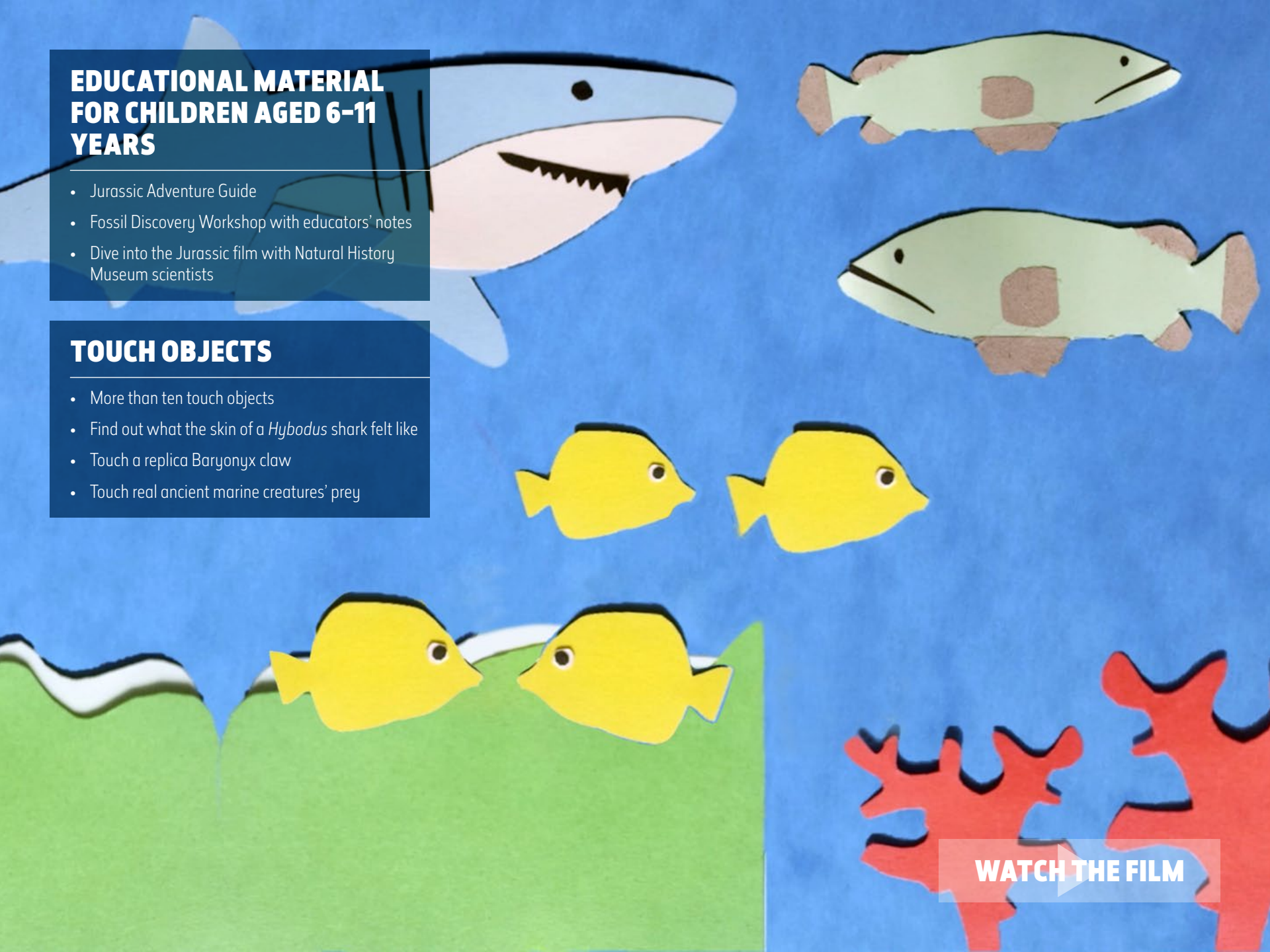


EDUCATIONAL MATERIAL FOR CHILDREN AGED 6-11 YEARS

- Jurassic Adventure Guide
- Fossil Discovery Workshop with educators' notes
- Dive into the Jurassic film with Natural History Museum scientists

TOUCH OBJECTS

- More than ten touch objects
- Find out what the skin of a *Hybodus* shark felt like
- Touch a replica Baryonyx claw
- Touch real ancient marine creatures' prey



WATCH THE FILM

WHAT'S INCLUDED

Developed as a fully turnkey exhibition designed to fit between 650 sqm/7,000 sqft and 1,000 sqm/11,000 sqft, the exhibition consists of the following components:

- Over 90 key original specimens from the Natural History Museum's collections, including complete, fully articulated fossil skeletons of marine reptiles with bespoke mounts
- 12 casts, models and touchable objects
- Setworks, display cases and AV equipment
- Graphic panels and labels in American English and Spanish
- 11 Films, atmospheric soundscapes and CGI
- 3 digital and hands-on interactives
- Accompanying educational material for children aged 6 to 11 years
- Related retail and publishing products available as an optional extra
- Installation by the Natural History Museum team

The objects shown in the brochure are for illustrative purposes only. Final object lists will be confirmed with each venue.



CONTACT US

Touring Exhibitions
The Natural History Museum
Cromwell Road
London SW7 5BD
UK

+44 (0)20 7942 6245
touring@nhm.ac.uk
nhm.ac.uk/touringexhibitions

