



Love Stories: Portraits, Passion & Partnership

NATIONAL PORTRAIT GALLERY

A National Portrait Gallery Touring Exhibition

2023

Overview

This exhibition will present masterpieces from the collection of the National Portrait Gallery, to explore the role of love in the creation of some of the greatest masterpieces of Western art. For the first time an exhibition will argue that ideas of love and desire have been critical to the development of portraiture since the genre's emergence in the English Renaissance. Portraits provide visual records of relationships, are used to memorialise dead or absent lovers, and have often been given as love tokens.

At the heart of this exhibition are a series of real-life love stories, from Van Dyck to the present, that are grouped thematically. Each of the love stories sheds light on a different aspect of romantic love and the role of portraits within it, from images which capture an artist's obsession with their muse to those that record tragic love affairs or celebrate the triumph of love against the odds.



Ellen Terry ('Choosing') by George Frederic Watts, 1864, oil on strawboard, NPG 5048

Themes

01

Obsessed by the Muse

The Artist and the Muse
The Lover and the Muse
Redefining the Muse

02

Creative Couples

Literary Love
A Shared Studio

03

Portraying Partnerships

Portraits and Marriage
The Wedding Day
Life Together

04

The Trials of Love

Scandal and Tragedy
Love against the Odds

05

Love and the Lens

A Selection of Works



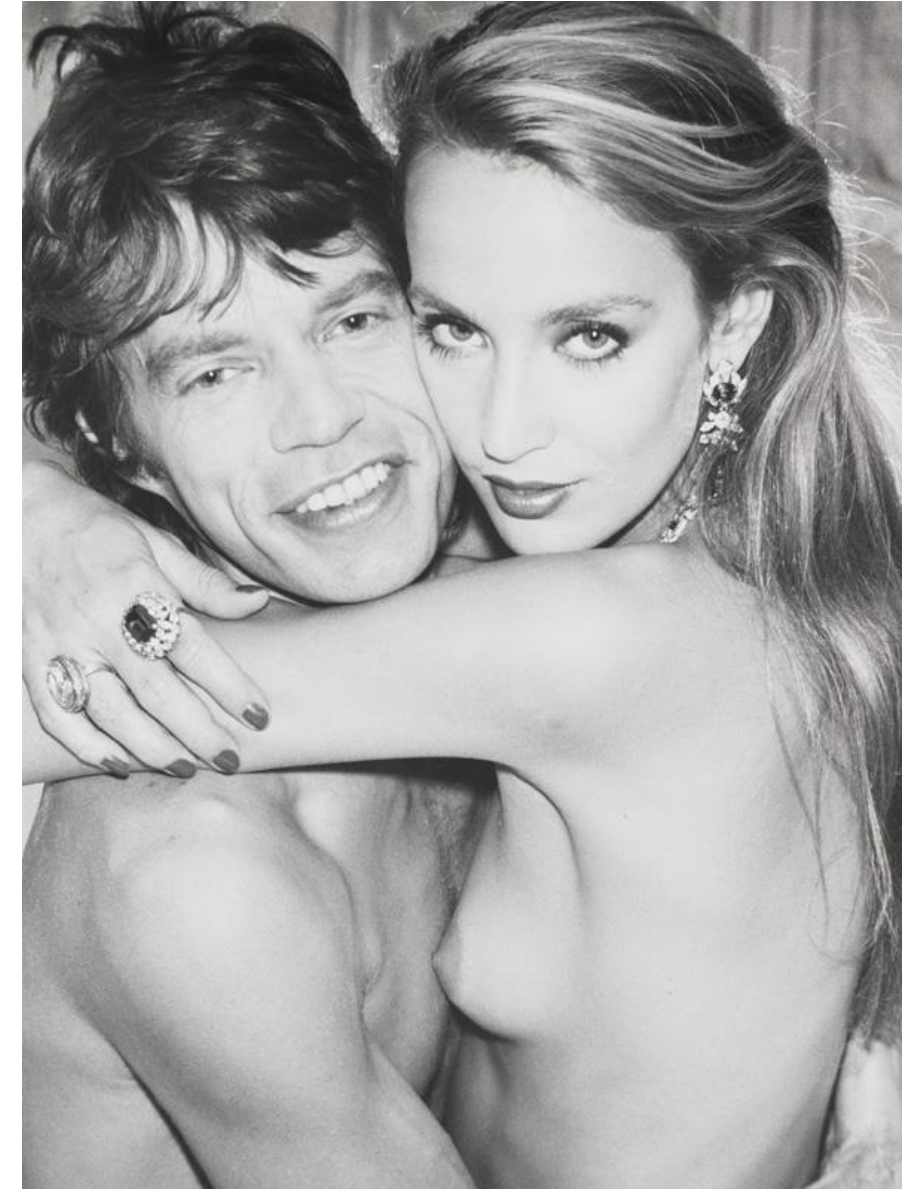
Obsessed by the Muse: Redefining the Muse
Naomi Campbell by Simon Frederick, archival inkjet print, 2016, NPG P2035



The Trials of Love: Scandal and Tragedy
Venetia, Lady Digby by Sir Anthony Van Dyck, oil on canvas, circa 1633-1634, NPG 5727



Creative Couples: Literary Love
George Gordon Byron, 6th Baron Byron by Thomas Phillips, oil on canvas, circa 1835, based on a work of 1813, NPG 142



Love and the Lens
Mick Jagger; Jerry Hall by Norman Parkinson, bromide fibre print, July 1981, NPG x30146

Further Information

Size: Approximately 110 works

Area: minimum 500 - 700 m²

Available from: Available from Autumn 2023

Important note: The exhibition is curated by Dr Lucy Peltz, Head of Collections and Displays (Tudor to Regency). The NPG's team of period specialists will also contribute their expertise to the interpretation and publication.

The exhibition will be accompanied by a fully-illustrated publication.

For further information and more images of works please contact: **Pauline Velge, International Partnerships Manager**
T: +44 207312 2445, E: pvelge@npg.org.uk

NATIONAL PORTRAIT GALLERY

2023 – Love Stories: Portraits, Passion & Partnership