



ALBERTVS
DVREVS
NORICVS
FACIEBAT
MDCCLXXXIV

.. Albrecht
DURER
THE REMONDINI COLLECTION

.. Albrecht
DÜRER
THE REMONDINI COLLECTION

EXHIBITION PROJECT

Contemporanea Progetti s.r.l.

Via del Campofiore, 106

50136 Firenze

Italia IT

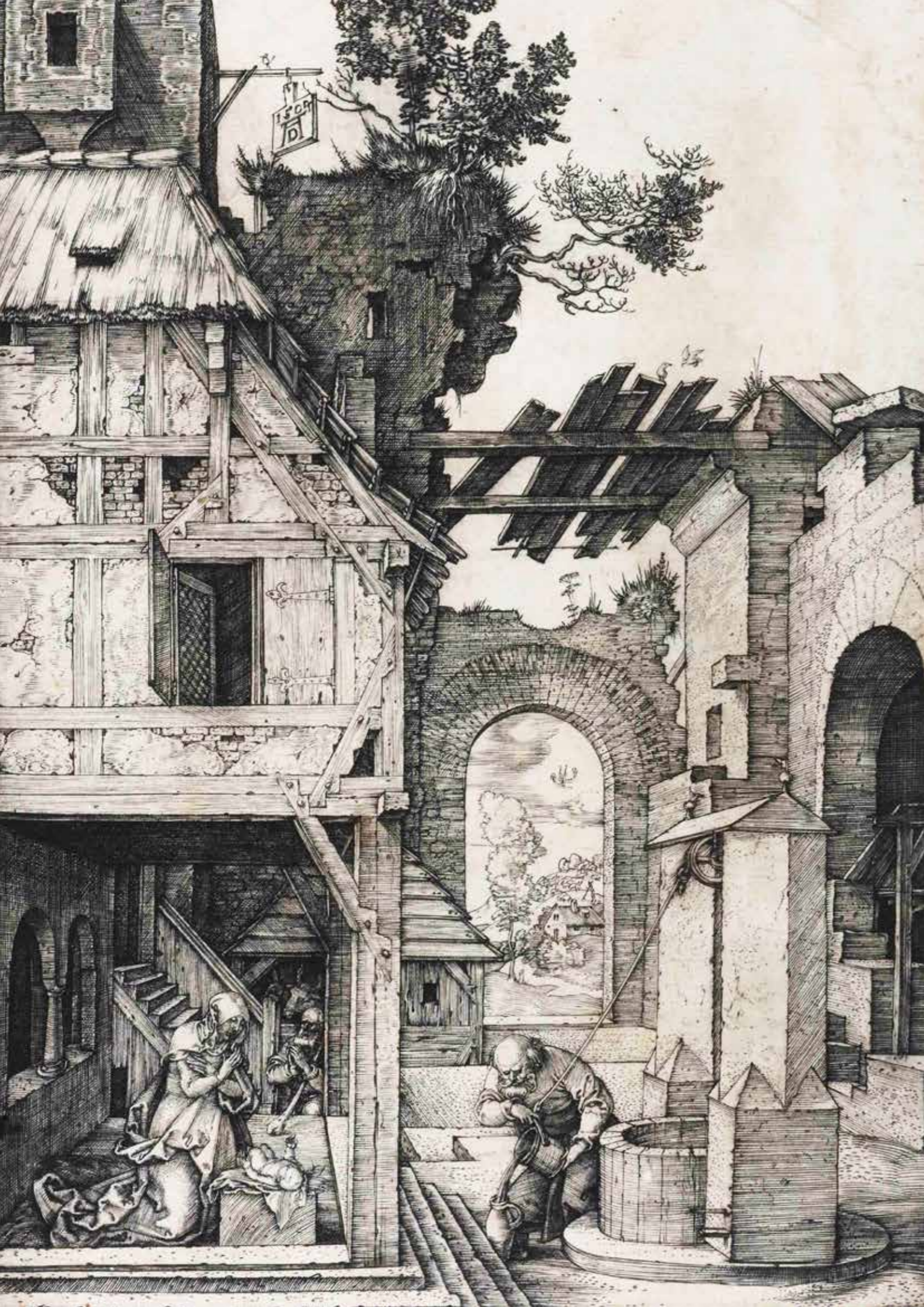
Tel +39 055/6802474

Fax +39 055/6580200

f_merz@contemporaneaprogetti.it

l_carioni@contemporaneaprogetti.it

Musei Civici Bassano del Grappa



ABOUT THE EXHIBITION IN BRIEF

Without a doubt, Albrecht Dürer (1471-1528) was one of the most important and iconic figures of the German Renaissance with enormous influence across Northern Europe even during his own lifetime. His prolific body of work encompasses theory, books, altarpieces, portraits, watercolors, woodcut prints, but he is perhaps most admired today for his engravings, a technique that he preferred and perfected.

Today, the Civic Museums of Bassano del Grappa in Italy conserve a significant and comprehensive collection of some 214 of his etchings. It is known as the Remondini Collection, and is considered by many experts as one of the most complete collections in the world in terms of size and quality, second only to the Dürer collection at the Albertina Museum in Vienna. Thus it is indeed a rare, and very special occasion to offer to audiences abroad the opportunity to view an extensive selection of these superb masterworks in this medium.



ABOUT THE COLLECTION IN BRIEF

In 1660, Giovanni Antonio Remondini (Padua 1634-1711) founded a modest print shop in Padua, Italy that was to become an industrial giant in typography, making a fortune based on great attention to originality, quality, popular imagery and widespread distribution. Their etchings employed iconographic models that gave visual life to popular tales and local legends. The remarkable history of this family of entrepreneurs is well-documented. Subsequent generations focused on the production of the popular literary times and then added the production of iconographic imagery. By the 18th century, the typography owned 18 printing machines, 24 presses for copper printing and 2 presses for flowered paper, 4 paper mills, and one foundry for producing letter sets. Its production of sacred images - known as *the saints of Remondini* - together with chivalrous figures, cityscapes, the so-called optical views (precursors of the cinema), representations of "the four seasons," portraits, calendars as well as playing cards, and cut-out paper soldiers were diffused all across Europe, Russia and even America, with captions translated in Italian, Latin, French, Spanish, German, Slavic, Greek and Russian.

An extensive network of sales agents was established to propagate this extraordinary production to the far-flung corners of the earth. From the valleys of the Bassano del Grappa area of Veneto, these agents travelled for thousands of kilometers on incredibly long journeys, selling Remondini typeset products city to city, and door to door.

As this collection of Dürer etchings demonstrates, the Remondini were not just producers of populist images. They were also avid collectors, who sifted through Europe motivated by both a passion to collect the very best artworks of the greatest masters of engraving, but also with a sense of business to convert them into models of their deliberately populist production - Dürer, but also Rembrandt, Tiepolo, Ricci, Canaletto, Piranesi, to name just a few.



ABOUT THE CIVIC MUSEUMS OF BASSANO DEL GRAPPA

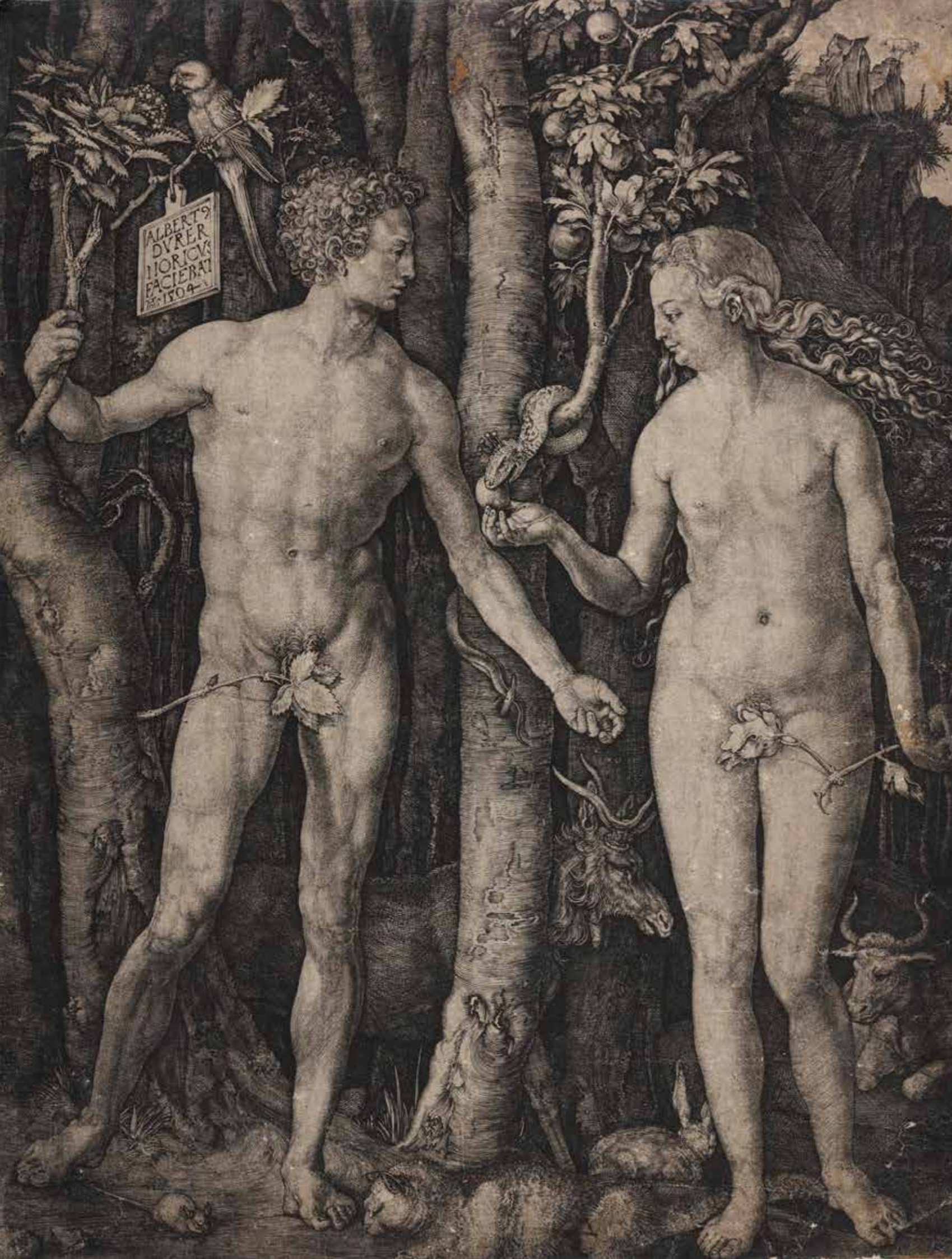
The Civic Museums of Bassano del Grappa is an entity comprised of four museums – the Civic Museum itself and one of the oldest museums of the Veneto region, the Roi Museum, the Remondini Museum and the Bonaguro Palace. Together with several exhibition spaces for temporary exhibitions, they form the cultural core of Bassano city center and conserve an outstanding heritage from archaeology to contemporary art with artists such as Guariento, Canova, Da Ponte, Longhi, Gentileschi, Dürer and Sironi.

Of particular note is the preeminent collection of Jacopo Bassano and of his flourishing studio that is conserved at the Civic Museum. This three generations of painters marked the history of art in Italy and contributed to making Bassano an extremely relevant center of artistic excellence at the turn of the 16th century.

The Remondini Museum and the Dürer Collection can be found at the nearby Sturm Palace. Also located there is the Giuseppe Roi Museum, dedicated to pottery. The Bonaguro Palace, with its collections of botanicals and the permanent exhibition, *Animal World* is the landmark for lovers of nature and natural history.



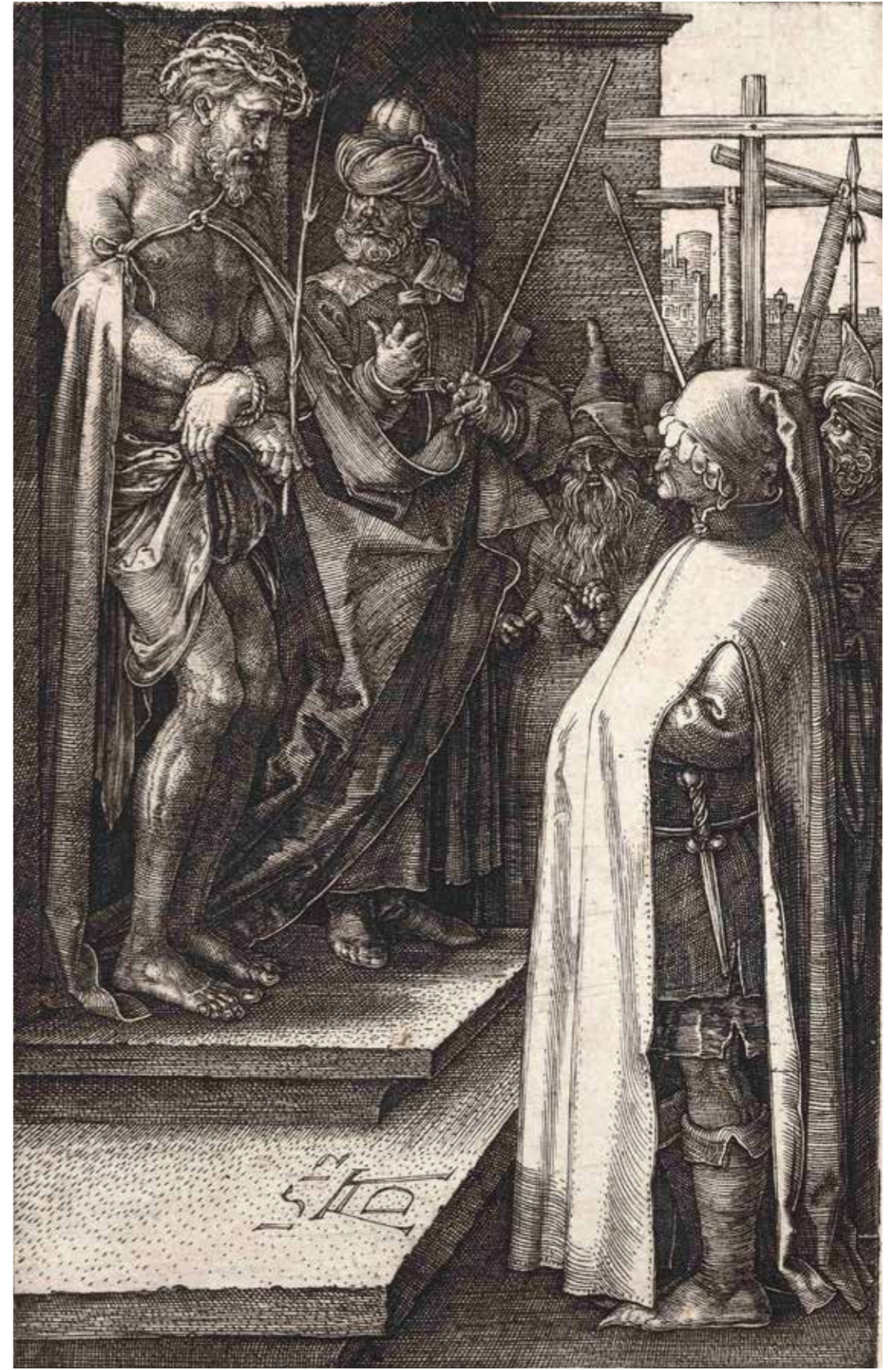
ENGRAVINGS



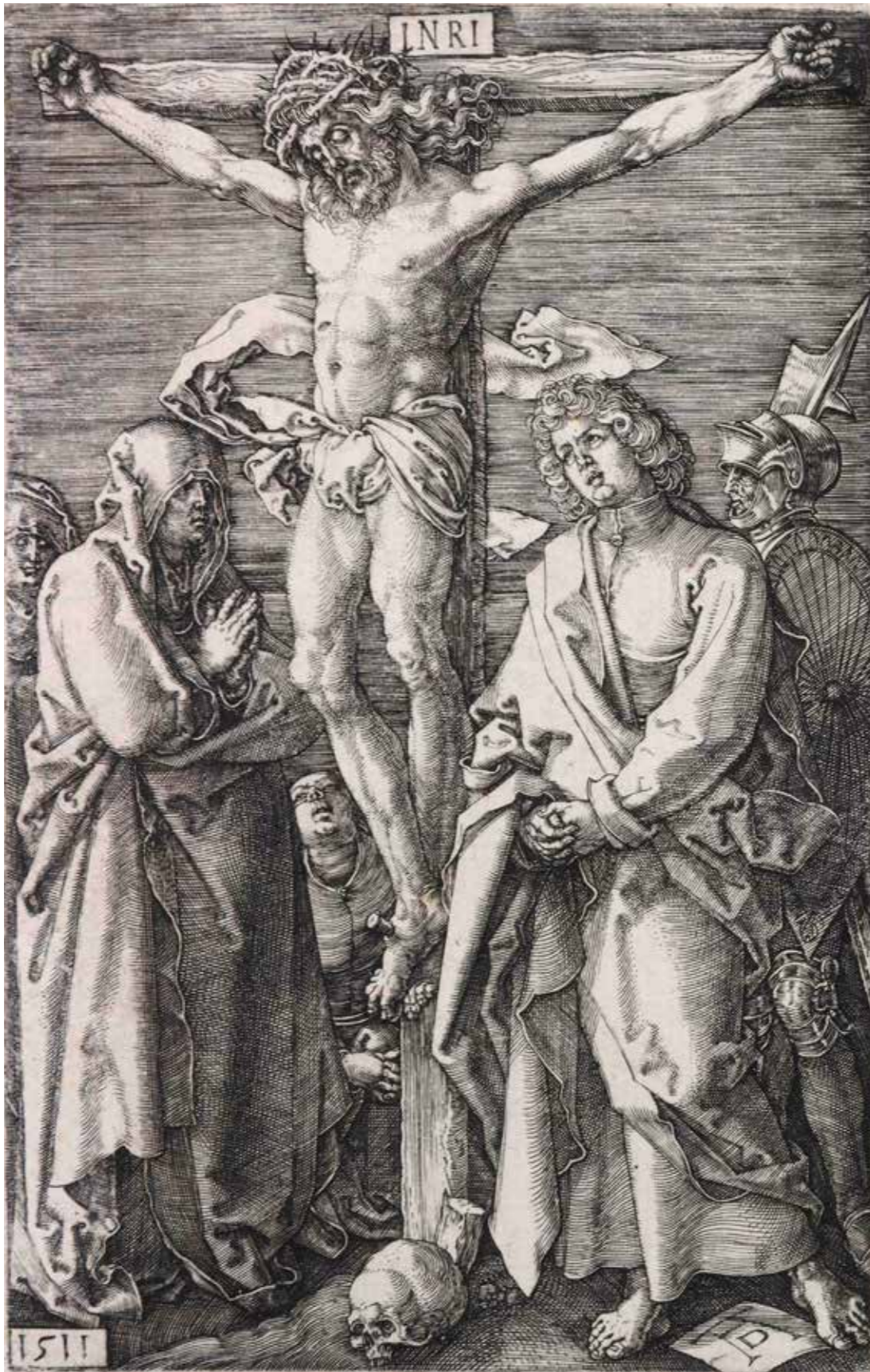
Adam and Eve
Etching
248 x 191 mm



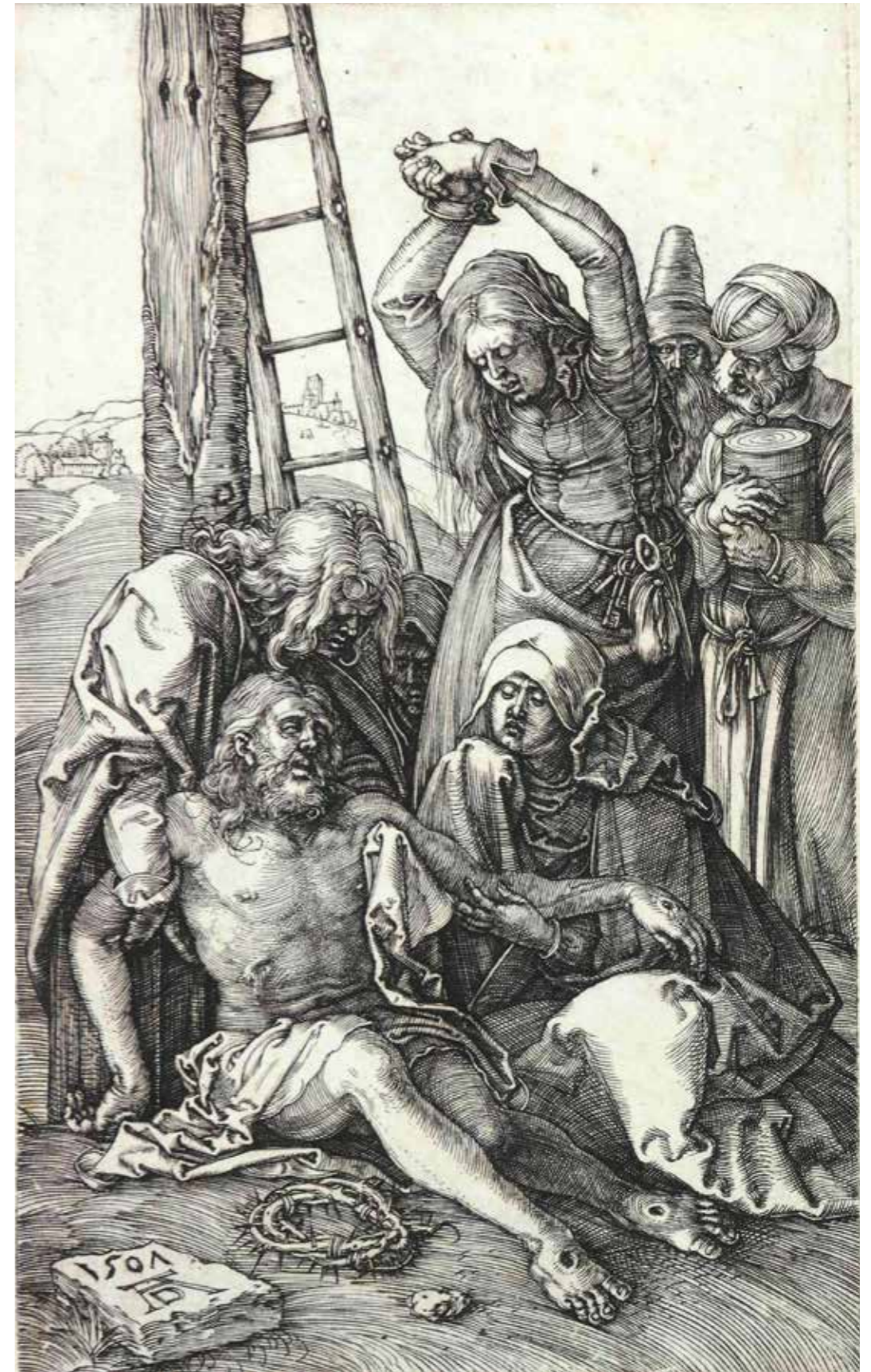
The Orison in the Garden
Engraving
122 x 76 mm



Ecce Homo
Engraving
122 x 76 mm



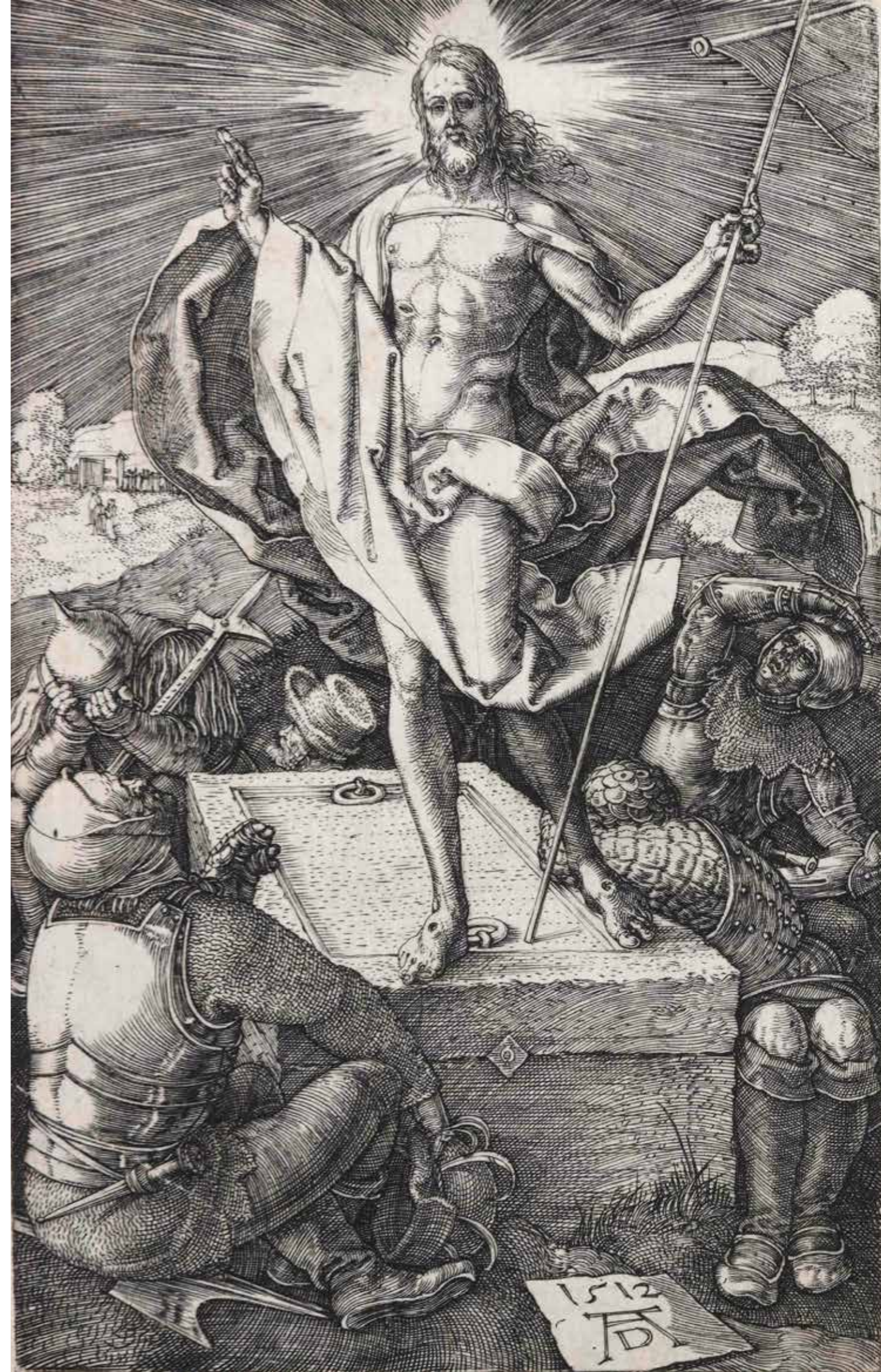
Crucifix
Etching
122 x 76 mm



Deposition from the Cross
Etching
122 x 76 mm



Jesus in Limbo
Engraving
122 x 76 mm



Resurrection of Christ
Engraving
122 x 76 mm



Small "Ecce Homo"
Etching
118 x 67 mm



Virgin Mary Nursing the Baby
Etching
98 x 70 mm



Holy Family
Engraving
238 x 186 mm

St. Bartholomew Apostle
Engraving
120 x 76 mm



St. Thomas Apostle
Engraving
120 x 76 mm



St. Paul Apostle
Engraving
120 x 76 mm



St. Simon Apostle
Engraving
120 x 76 mm



St. George on Foot
Engraving
119 x 71 mm



St. Sebastian Variant
Engraving
107 x 79 mm



St. Jerome in the Cell
Engraving
248 x 188 mm

St. Uberto
Etching
356 x 260 mm

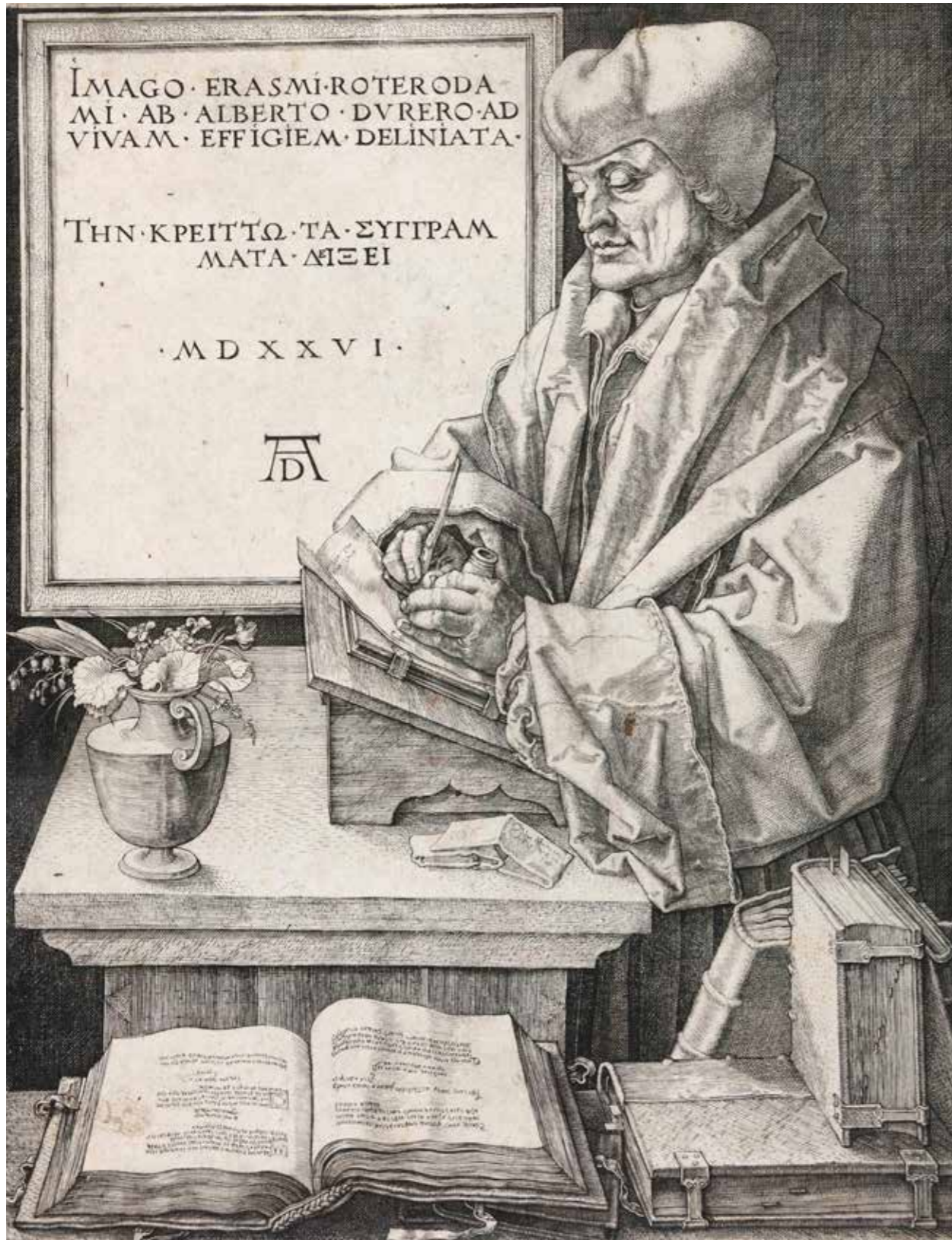




Portrait of Frederick III of Saxony
Etching
194 x 129 mm



Portrait of Bilibaldo Pirkeymer
Etching
180 x 116 mm



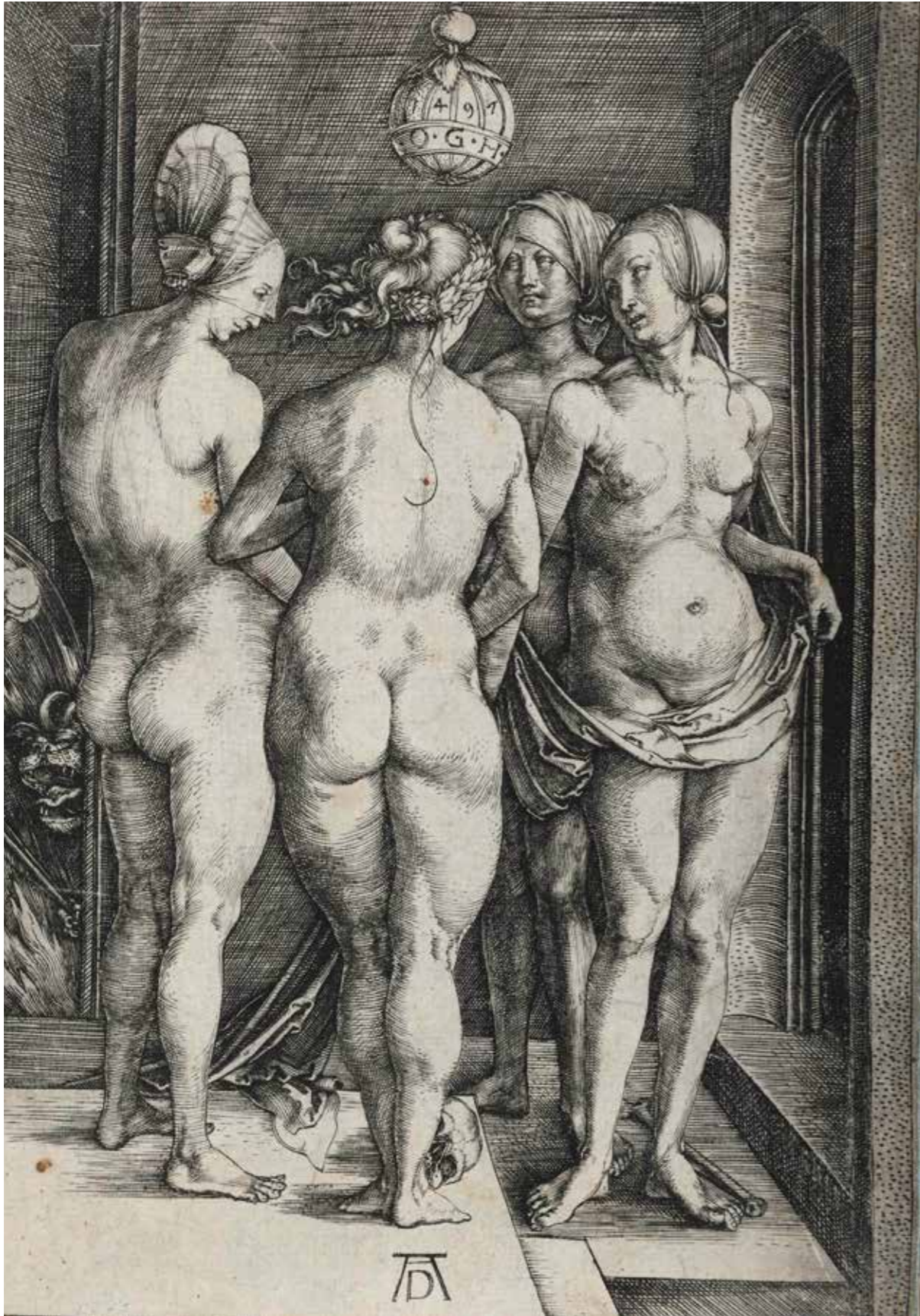
Portrait of Erasmus of Rotterdam
Etching
252 x 194 mm



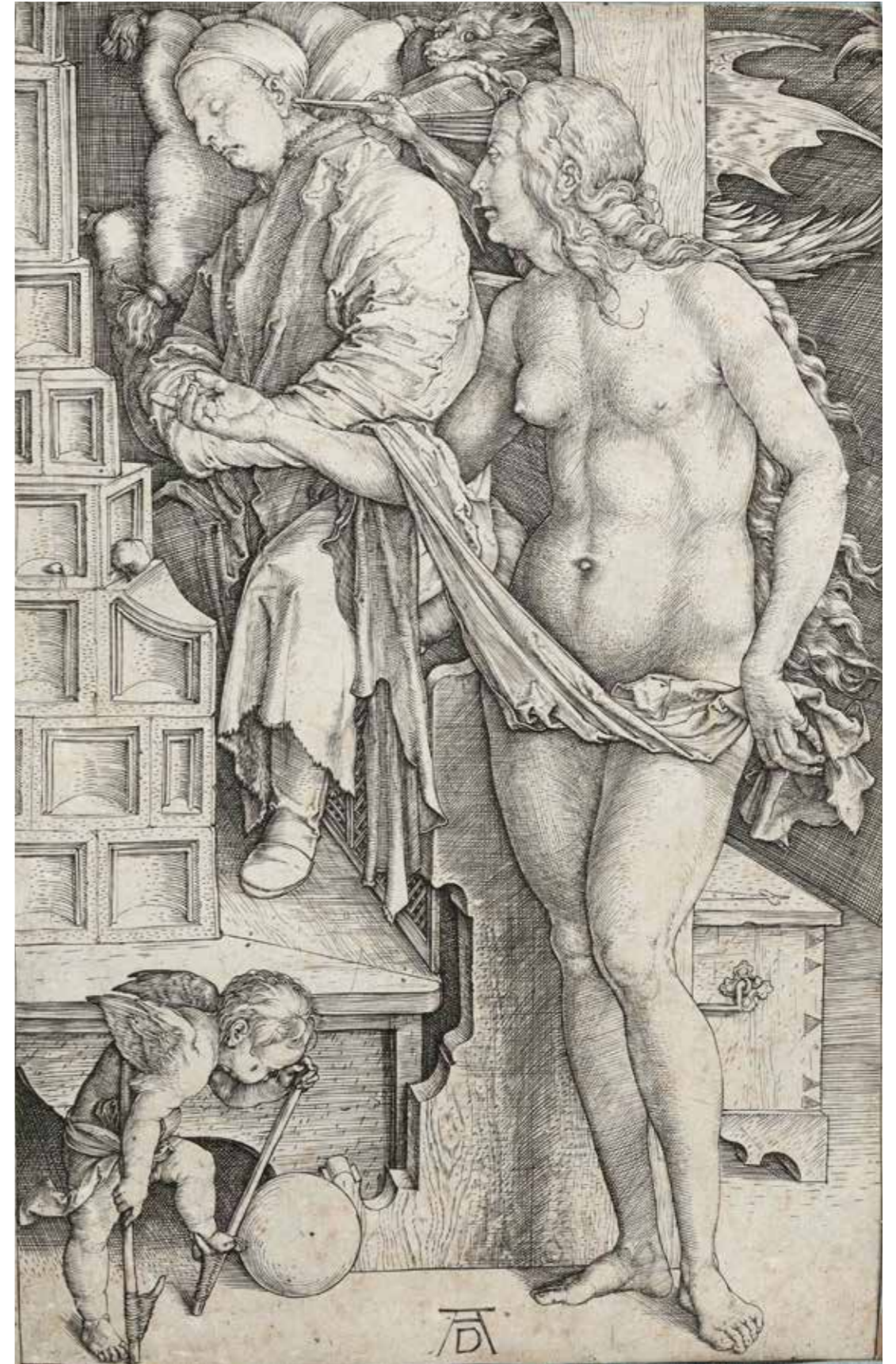
Ms. and Mr. Cook
Etching
116 x 79 mm

Melancholia
Etching
240 x 188 mm





The Four Witches
Etching
192 x 123



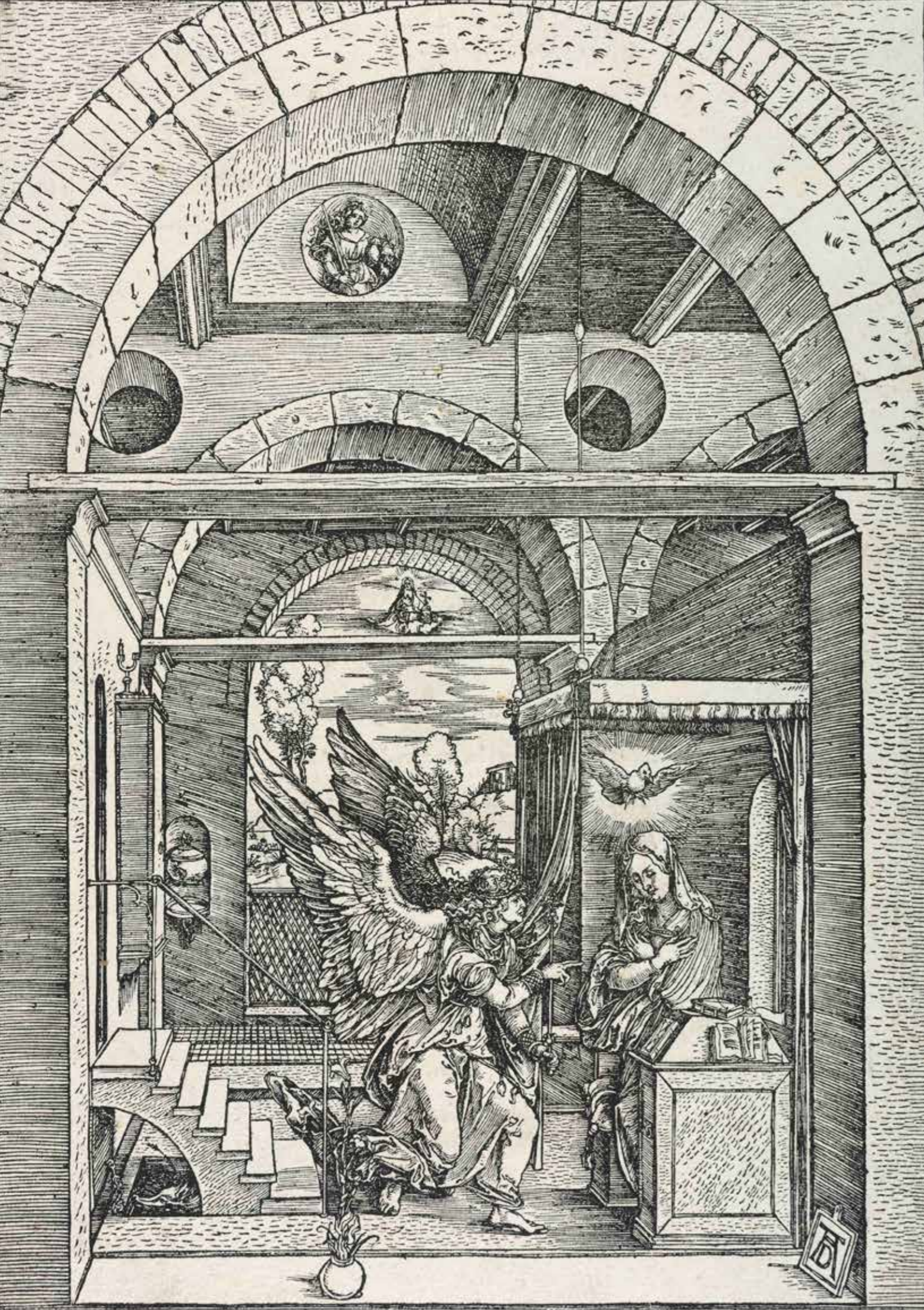
The Dream of the Idle
Etching
187 x 122 mm



Holy Family and Worshipping Angels
Xylography
300 x 211 mm



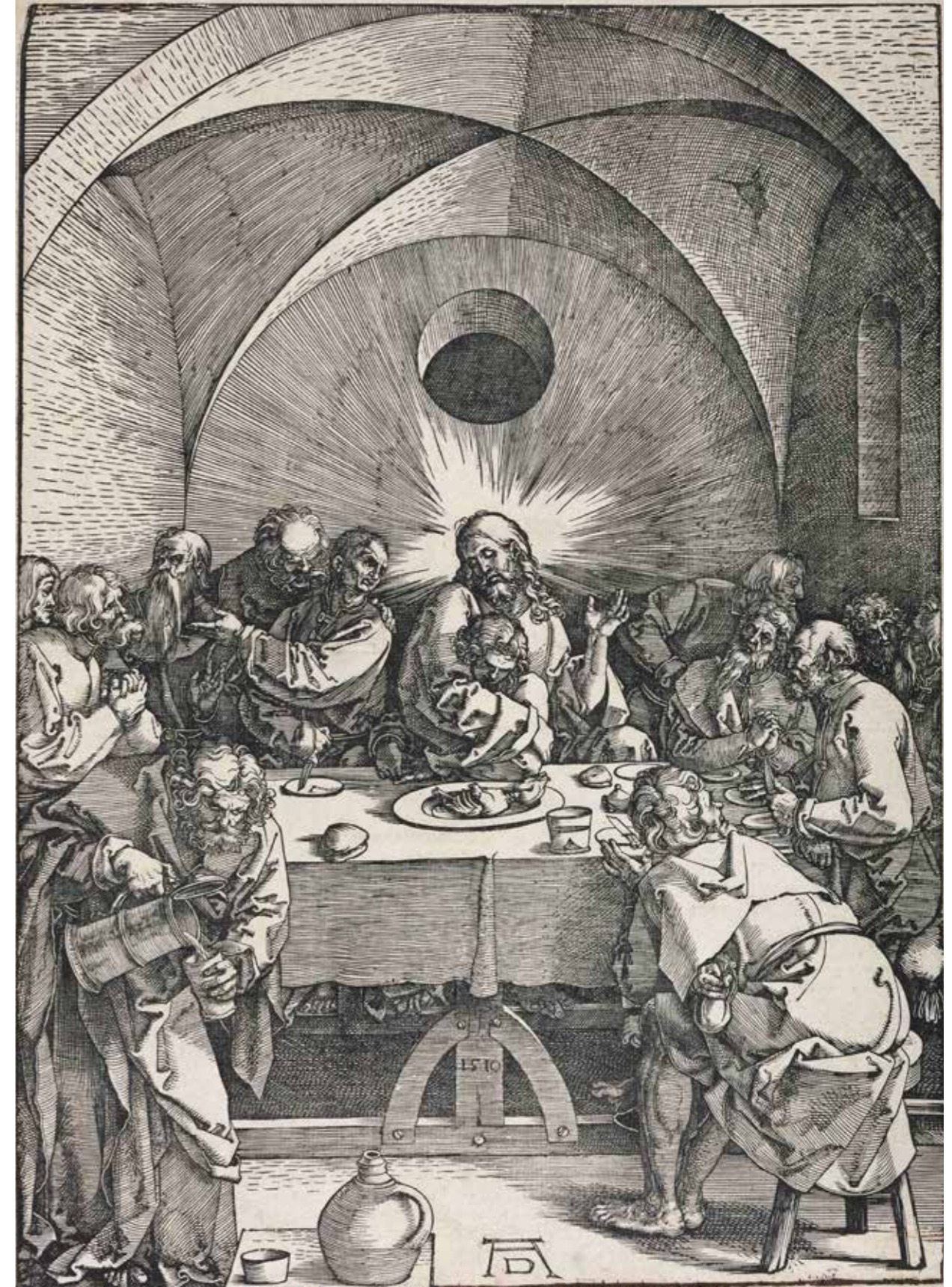
Assumption of the Virgin
Xylography
294 x 210 mm



Annunciation
Etching
304 x 215 mm



Marriage of the Virgin
Xylography
306 x 212 mm



Last Supper
Xylography
405 x 290 mm



The Crucifixion
Xylography
390 x 284 mm



The Resurrection
Xylography
393 x 280 mm



The Great Fortune
Etching
330 x 228 mm



Adam and Eve Chased from the Garden of Eden
Xylography
130 x 100 mm



The Beast with Seven Heads and Ten Horns
Xylography
410 x 301 mm



Last Supper
Xylography
210 x 295 mm



St. George Killing the Dragon
Xylography
216 x 146 mm



Virgin with Child Adored by the Angels
Xylography
300 x 224 mm



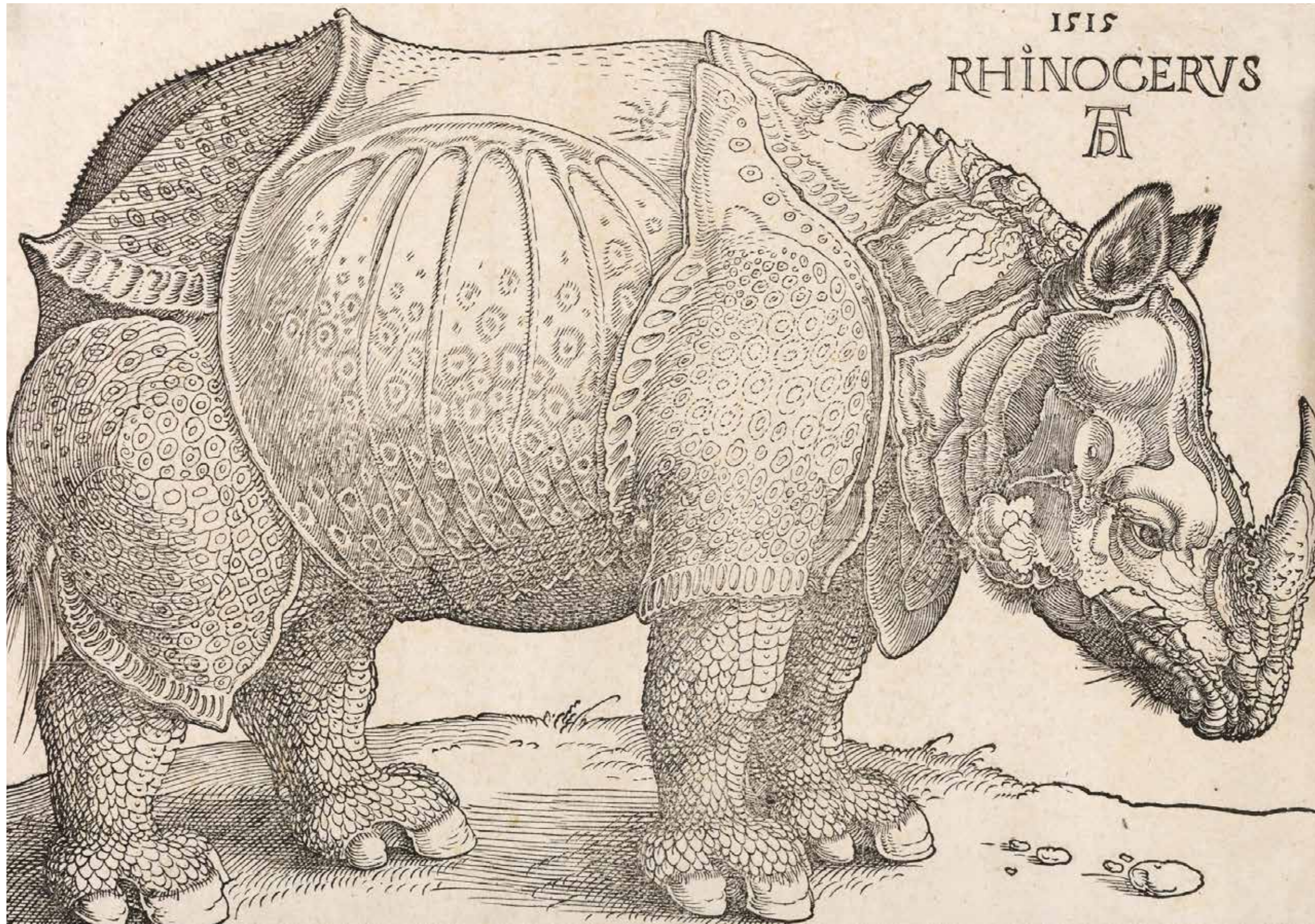
St. Stephen, St. Gregory and St. Lawrence
Xylography
210 x 144 mm



St. Niccolò, St. Erasmus and a Third St. Bishop
Xylography
205 x 144 mm



St. Quirino, St. Massimiliano, St. Floriano, St. Severino,
 St. Colombano and St. Leopoldo: Protectors of Austria
 Xylography
 340 x 272



Rhinoceros
Xylography
215 x 300 mm



CONTEMPORANEA PROGETTI srl

Via del Campofiore 106

50136 Florence

tel +39 055 6802474

fax +39 055 6580200

www.contemporaneaprogetti.it

f_merz@contemporaneaprogetti.it

l_carioni@contemporaneaprogetti.it