

# THE LIMITS OF HUMANITY

## A HYBRID EXHIBITION THAT QUESTIONS EVERY FACET OF HUMAN IDENTITY

The digital revolution and the development of biotechnologies place humanity at a turning point where ethical questions take centre stage. The exhibition's Inventive and humorous museography combined with immersive and artistic staging are designed to question our own limits...and beyond!



© DR - Samuel Yal



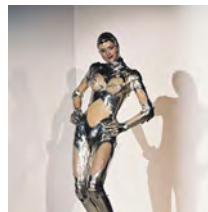
### I AM AN EXCEPTIONAL ANIMAL

A number of contemporary artistic installations pose the question of what is specifically human. A major audiovisual display introduces us to the controversy: is Man an animal like other animals?



### I AM A CHAMPION

The exhibition decodes the desire of Man to surpass his limits. An interactive training area gives visitors an opportunity to transform their appearance, before learning more about athletes who have pushed back their physical limits...but also their mental ones.



### I AM A CYBORG

Prosthetics, exoskeletons, implants, connected objects... A great variety of devices in the field of man-machine are illustrated in this part. A humorous film decodes the contradictory positions of "bio-conservatism" and "techno-progressivism".



### I AM A MUTANT

In a scenic laboratory setting, visitors are invited to create the "perfect" baby through genetic manipulation of the embryo. A novel experiment which questions the use of biotechnologies and their ethical dimensions...



### I AM IMMORTAL

A mix of objects from ethnographic collections, contemporary art, folk art and mysterious special effects, this part of the exhibition examines the quest for immortality throughout human history, and one of its recent variations: trans-humanism.



### WE'RE ALL GOING TO DIE!

A dramatic setting takes visitors to a situation of collapse: a cinematographic apocalypse or the 6th crisis of biodiversity? But then, what can be our shared vision for the future? Audio and interactive devices accompany our reflection on this vast question.

An exhibition currently being designed by the Musée de l'Homme - Muséum national d'Histoire naturelle, with a surface area of 650 m<sup>2</sup>.



# THE MUSÉUM'S EXHIBITIONS ADAPT TO YOUR SITE!



## HOW YOU CAN HOST THE EXHIBITION ?

---

### HOST A CUSTOMIZED ADAPTATION

**100 — 900 M<sup>2</sup>**

This is a scenographic or graphic adaptation of the original exhibition consisting of:

- The grant of use for the museographic and scientific concept
- Content in the form of digital files (museographic programme, texts in French and English, audiovisual and multimedia resources)
- Additional objects and devices to be handled
- Museographic assistance for project adaptation
- Mediation tools for the exhibition: educational materials and files
- Scientific and cultural programming resources around the exhibition

### HOST THE LIGHT VERSION

**80 — 100 M<sup>2</sup>**

The Light Version is a synthesis of the original exhibition in the form of 10 graphic panels. It allows you to present a high-quality support for mediation on an original theme. It includes:

- Graphic panels in the form of digital files, ready for printing
- Mediation tools for the exhibition: educational materials and files
- Audiovisuals and multimedia for projection on your screens (optional)

## CONTACT

---

[itinerances@mnhn.fr](mailto:itinerances@mnhn.fr)

### THE EXHIBITION AT A GLIMPSE

- Major interactive games
- Museum pieces
- Audiovisual display
- Contemporary artworks

## FURTHER INFORMATION

---

[www.mnhn.fr/en/travelling-exhibitions](http://www.mnhn.fr/en/travelling-exhibitions)