

**INFINITY**

**MEYVAERT.**



THE FITZWILLIAM - CAMBRIDGE, UK - 2012

## **THE INFINITY: MODULAR AND DEMOUNTABLE SHOWCASE SYSTEM**

When we designed the Infinity showcase we had one question in mind: "How do we design a case that museums can setup themselves without outside help?"

We came up with a system that is demountable, easy to transport, quick to build, and safe. The Infinity meets all conservation and security requirements for loaned objects. Thanks to its modularity, it can present different sized objects. It has an elegant design, yet it is rigid and secure.

Its flexibility and versatility allow designers and exhibition managers to be creative with confidence.

## **DESIGN FLEXIBILITY**

With the Infinity, we offer you the most flexibility and versatility in terms of display options, while conforming to high conservation and security standards. It is modular, demountable and storable, making it ideal for your ever evolving exhibitions. You can design your exhibition layout according to your exact needs, while not being limited to a specific layout forever. This makes the Infinity a sustainable and future proof investment.

Museums and private collectors across the world have chosen the Infinity because of its track record of creating safe and secure environments for collections and artefacts. Thanks to its high grade specifications, the world's top museums have approved it for loaned objects.

A single display case is 900 x 900 x 2200 mm in size. The door opens a full 90 degrees, permitting full access even for larger objects.

As your exhibitions evolve, you can purchase additional showcase elements to match new exhibition requirements, such as the dropdown tails for accent lighting and the in-case projector.

What's more, the showcases easily connect using a kit. You will find more information in the options section of this brochure.



## TECHNICAL SPECIFICATIONS

### CONCEPT

Fully glazed  
Easy to assemble & disassemble  
Modular system with a hinged door that opens 90°

### GLASS

11.5 mm laminated anti-bandit glass  
2 layers of 5 mm with 4 interlayers  
Extra-white glass, with anti-reflective glass as an option

### LOCK

Mechanical security system with  
2 x (Abloy cam lock & mechanical lock)

### AIRTIGHTNESS

Airtight case with Meyvaert clear seal (0.1 AER)

### CASE TOP

Glass top or metal top with 8 dimmable LED spots  
providing excellent internal lighting

### FRAME

High quality RAL 9005 matt finish

### PROSORB

Compartment for 2 Prosorb cassettes  
externally accessible via removable kickplinth

### BASE COVER

716 x 716mm steel base plate, colour: RAL 9005 matt

### STANDARD SIZE & WEIGHT

900 x 900 x 2200 mm, 340 kg

### POWER CONNECTION

Easily removable power tube  
Power can also be supplied directly to the top







\*simplified representation

## MOUNTABLE AND DEMOUNTABLE

We engineered the Infinity for smooth and safe assembly and disassembly, with a minimal amount of components and tools. There are no loose parts.

The bottom creates a low centre of gravity so that the first standing glass side is supported in a stable manner. Components simply slide in place, requiring only minimal fastening. Every component can be lifted by two people. No component has sharp edges.

-  1 Level the base module.
-  2 Place the two glass sides and the top.
-  3 Place the top frame and the third glass side. Place the internal elements
-  4 Install the door and kickplinth to finish the build.

## TRANSPORTABLE AND STORABLE

The structure of the Infinity is self-supporting. This means that you can move a fully assembled showcase using a pallet truck. This is particularly useful during the initial stages of display building, when the best set-up of the gallery space is yet to be determined.

Additionally, we have a convenient flightcase on wheels available to safely transport and store the Infinity in its disassembled form. We have flightcases for one and for two Infinity cases.





## MODULARITY FOR INFINITE POSSIBILITIES

Modularity is one of the principal qualities of the Infinity. You can create the exact volume you need around your artefact or collection, and later adjust the volume to a new exhibition layout.

Infinity showcases can be joined from just two up to more complex arrangements, with any number of showcases placed in a straight line, as well as assemblies of two cases wide. Cases can even be joined at 90°.

When you join cases together, leftover glass sides only need an additional top and bottom to build an additional case.



MUSEUM DE WAAG & BIBLIOTHEEK - DEVENTER, NL - 2018

## **PRESERVE**

To meet the highest international conservation requirements, Infinity cases are equipped with an externally accessible Prosorb tray, which is hidden from view by a removable kickplinth. This tray compartment can hold two Prosorb cassettes that passively regulate the humidity level inside the display case.

The Infinity showcase offers great air tightness. Its AER of 0.1 was tested and confirmed by a study conducted by the University of Ghent.

## **PROTECT**

We only use Abloy locks, which are optimally suited for use in display cases. Every lock has a unique key combination. The showcase has a separate closing mechanism that is only accessible when the Abloy lock is operated. The closing mechanism actively compresses the seal as the door is secured into the closed position. The locks and closing mechanism are positioned above and below the case. As an additional security feature, these are not visible to the visitors, thereby making it impossible for them to determine which side is the door.

A separate security grill is situated above the Prosorb compartment, which allows air to circulate freely into the display area but prevents access into this space.

The glass is 11.5 mm laminated anti-bandit glass which has two layers of 5 mm with four interlayers. Optional high security frames overlap the glass joints by 30 mm.



LIGHTING TOP & SHELVES  
**ROYAL ALBERTA MUSEUM - EDMONTON, CA - 2018**  
Design by RAM design team

**CUSTOMIZE YOUR INFINITY**



### **METAL TOP WITH LED SPOTS**

- 8 adjustable and dimmable downlights (3000K).
- \* glass top and metal top are interchangeable without having to disassemble the display case.



### **GLASS**

- Extra-white glass as standard, can be upgraded to anti-reflective glass.

### **GLASS TOP**

- Both the glass top and the glass sides are available in anti-reflective glass.



### **INTERNAL PANEL**

- Optional internal forex panel.
- Ideal for wall displays and great choice if graphics are desired.





### GLASS SHELVES

- Height adjustable glass shelves on stainless steel suspension rods.
- Float glass 10 mm extra white.
- 1 or 2 shelves / full or half width.
- Max. total load 15 kg/shelf.



### HIGH SECURITY FRAMES

- Provides additional security for your exhibition. Also used aesthetically to give your exhibition a more robust edge.
- Overlaps glass joints by 30 mm to provide additional security.



### METAL PLINTH

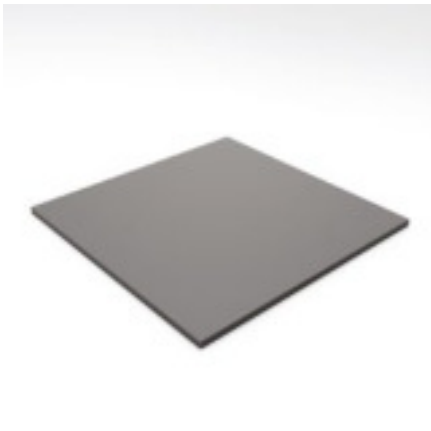
- Adds additional depth to your display or presentation.





## POWER TUBE

- Brings power from the bottom to the top.
- In configurations with multiple joined showcases, only one power tube is needed.



## FOREX BOTTOM PLATE

- Enables additional possibilities for object mounting.



## FLIGHTCASE

- Single or double flightcase.
- High quality, heavy duty solution for storage and transportation.
- Ideal for travelling exhibitions.
- Single flightcase: 2200 mm x 600 mm x 1145 mm.
- Double flightcase: 2200 mm x 1000 mm x 1145 mm.







### **SINGLE & DOUBLE CONNECTION KIT**

- Enables many different modular configurations.

**FOR MORE INFORMATION  
REGARDING CONFIGURATION  
POSSIBILITIES, PLEASE  
CONTACT US.**



### **FIBER OPTIC DROPDOWN TAILS**

In combination with the lighting top.

- 4 drop down tails to balance your lighting angles to perfection.

Note: All our lighting solutions are equipped with a dimmable function.



### **PROJECTION MODULE**

- Enhances the visitor experience and brings the artefact to life by giving it a backstory.





**CAPTURE YOUR AUDIENCE**



## **CAPTURE YOUR AUDIENCE**

In an era of flatscreens and digital signage, your audience has become accustomed to moving graphics. If you want to increase their engagement and immersion, projectors become a self-evident choice. With the optional projector module, we offer you an unprecedented solution to meet these expectations.

Just like the Infinity, we engineered the module to be easy to use and modular.

What's more, a single projector module also fits configurations of two and three showcases joined side by side. This gives you additional flexibility for your future exhibit designs.

## **WITH THE RIGHT FOCUS**

The goal of projection is to tell the story of an artefact while keeping it in focus. Sometimes, however, projection distracts from the artefact itself. We kept this in mind and made sure the module projects only on the backglass, at such an angle that objects placed in the showcase are not in the path of the beam.

The projector offers brightness and clarity even in lit spaces and operates very quietly. The module in which the projector and PC are integrated is an unobtrusive design that blends in with the rest of the Infinity's design features.



THREE JOINED INFINITY SHOWCASES,  
SHOWN WITH OPTIONAL PROJECTOR

**THEY CHOSE INFINITY**



4X1 CONFIGURATION  
**ROYAL ALBERTA MUSEUM - EDMONTON, CA - 2018**  
Design by RAM design team





3X1 CONFIGURATIONS WITH GLASS TOP  
ROYAL ALBERTA MUSEUM - EDMONTON, CA - 2018  
Design by RAM design team



THE FITZWILLIAM MUSEUM - CAMBRIDGE, UK - 2013



2X1 AND 4X1 CONFIGURATIONS  
THE FITZWILLIAM MUSEUM - CAMBRIDGE, UK - 2011





2X1 CONFIGURATION WITH GLASS TOP  
TACOMA ART MUSEUM - TACOMA, US - 2019



TACOMA ART MUSEUM - TACOMA, US - 2019



3X2 CONFIGURATIONS WITH GLASS TOP  
SCHEEPVAARTMUSEUM - AMSTERDAM, NL - 2013





3X1 CONFIGURATION WITH GLASS TOP  
SCHEEPVAARTMUSEUM - AMSTERDAM, NL - 2013



3X1 CONFIGURATION  
MUSÉE DU QUAI BRANLY - PARIS, FR - 2016





2X1 CONFIGURATION WITH INTERNALS  
STRANDINGSMUSEUM ST. GEORGE - THORSMINDE, DK - 2017



MADE FOR THE TABLE EXHIBITION - LONDON, UK 2019  
Goldsmiths' Company





**MADE FOR THE TABLE EXHIBITION - LONDON, UK 2019**  
Goldsmiths' Company

# MEYVAERT.

## WORLDWIDE ENQUIRIES

Dok Noord 3  
9000 Gent  
Belgium

T: +32 9 274 01 77  
[museum@meyvaert.be](mailto:museum@meyvaert.be)

### EMEA

David Nicolaes  
[david.nicolaes@meyvaert.be](mailto:david.nicolaes@meyvaert.be)  
T: +32 474 04 46 03

### FRANCE

Sophie Odic  
[sophie.odic@meyvaert.be](mailto:sophie.odic@meyvaert.be)  
T: +33 6 60 09 44 17

### POLAND

Włodzimierz Gajewski  
[poland@meyvaert.com](mailto:poland@meyvaert.com)  
T: +48 601 72 62 63

### UK & AUSTRALIA

Steve Pearse  
[steve@meyvaert.be](mailto:steve@meyvaert.be)  
T: +44 777 427 6514

### USA & CANADA

Florence Dwyer  
[florence.dwyer@meyvaert.be](mailto:florence.dwyer@meyvaert.be)  
T: +1 646 300 5626

### ASIA

Hui Cai  
[hui.cai@meyvaert.be](mailto:hui.cai@meyvaert.be)  
T: +65 8697 9936