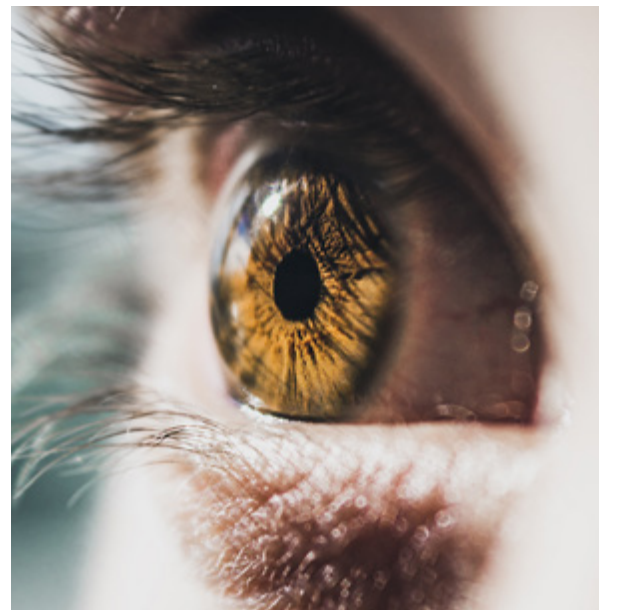
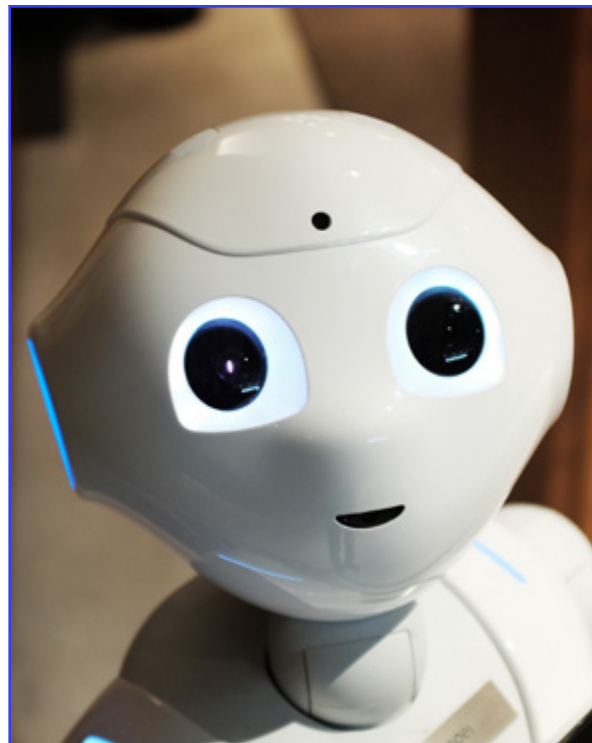
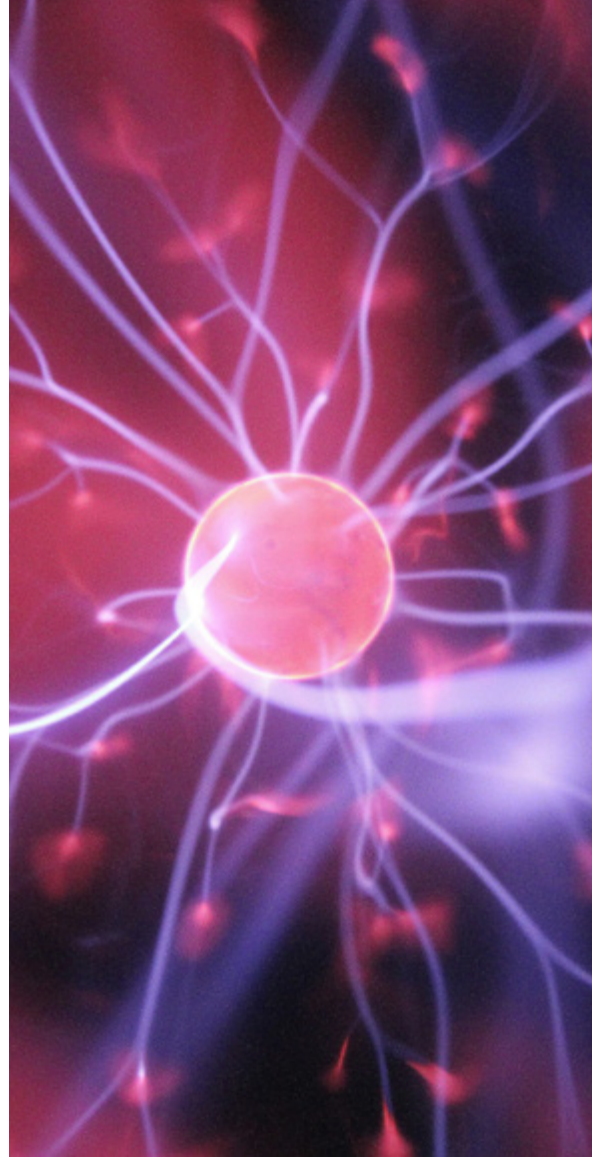
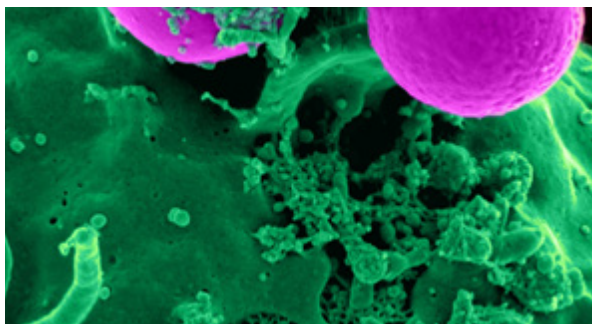




LOGIC GATE





We engage the mind and emotions, we create a new educational approach through shared fun and interactions

A close-up, high-resolution photograph of a human eye, showing the iris and eyelashes. The image is overlaid with a semi-transparent blue filter. The eye is looking slightly to the right of the frame.

LOGIC GATE

Logic Gate is a well-known manufacturer of exhibits, exhibitions, teaching tools and educational paths in Central and Eastern Europe.

It offers comprehensive services, ranging from project conceptualization and experience design onto constructing the exhibition itself, through freight and logistics planning, assembly and on-site animation. The company has extensive experience in managing educational and entertainment projects. Logic Gate successfully implements projects in cultural institutions such as museums, science centers, education centers. It also cooperates with the world of business and entertainment.

LOGIC
GATE

Idea

Members of our team were connected by a shared dream of providing better education.

First as kids, then educators, employees of science centers and now as parents – we see how important it is to nurture in kids and adolescents curiosity about the world, and provide means to explore it by the whole family.

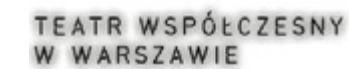
We aim that learning through fun, becomes an integrated part of the teaching process, as well as is an attractive leisure opportunity.

Experience

From the very beginning, our team consists of experienced engineers, scientists, architects, designers and science communication specialists who have implemented exhibitions and interactive exhibits around the world.

Our experience has emerged from completing projects for cultural institutions, science centers, nature education centers and major commercial networks. We managed projects not only in Central and Eastern Europe, but also in South America.

SCIENCES AND CULTURE CENTERS



NATURAL CENTERS



SHOPPING CENTERS



Our competences

- **Creating comprehensive exhibition concept**
- **Creating the concept of science centers and educational center**
- **Production of complete exhibitions (permanent, temporary and mobile)**
- **Designing and production of interactive exhibit**
- **Freight and logistic**
- **Exhibition management and exhibition curating**
- **Exhibition service support**
- **Modernization of existing stands and exhibition**
- **Educational event**
- **Creating educational kits (EDUboxes)**
- **Creating scenarios for teachers and educator**
- **Organization of training**
- **Designing and implementation of social research**
- **Conducting specialist consultation**



What we realize

- **Comprehensive thematic concepts of exhibitions for science centers, museums, cultural centers**
- **Permanent exhibitions**
- **Travelling exhibitions**
- **Mobile exhibitions**
- **Educational events**
- **Educational paths**
- **Interactive exhibits**
- **EDUboxes - specialist educational aids**
- **Consultations and social research**



**Comprehensive,
tailored concepts of
exhibitions for science
centers, museums
and cultural centers**

Torus Science Park

IN CIECHANÓW

DESCRIPTION: Development of the concept of interactive exhibition.

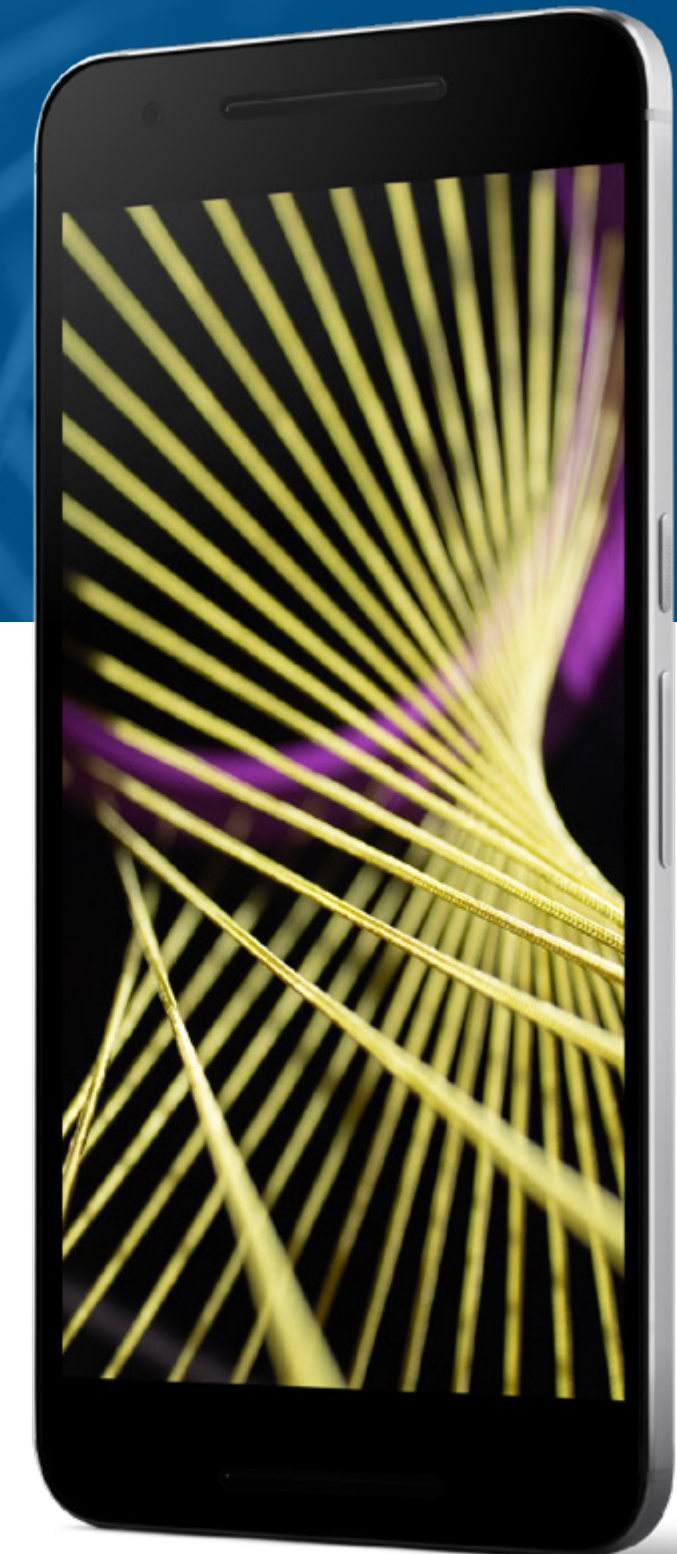
AREA: 300 m²

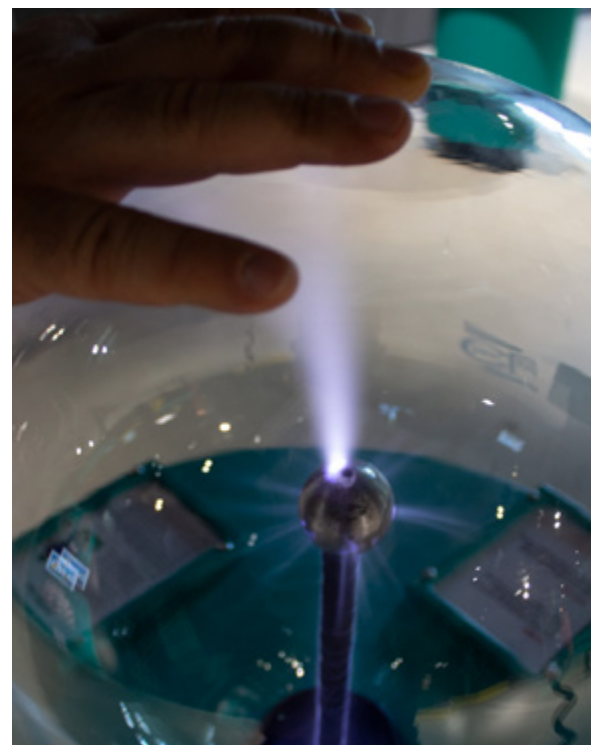
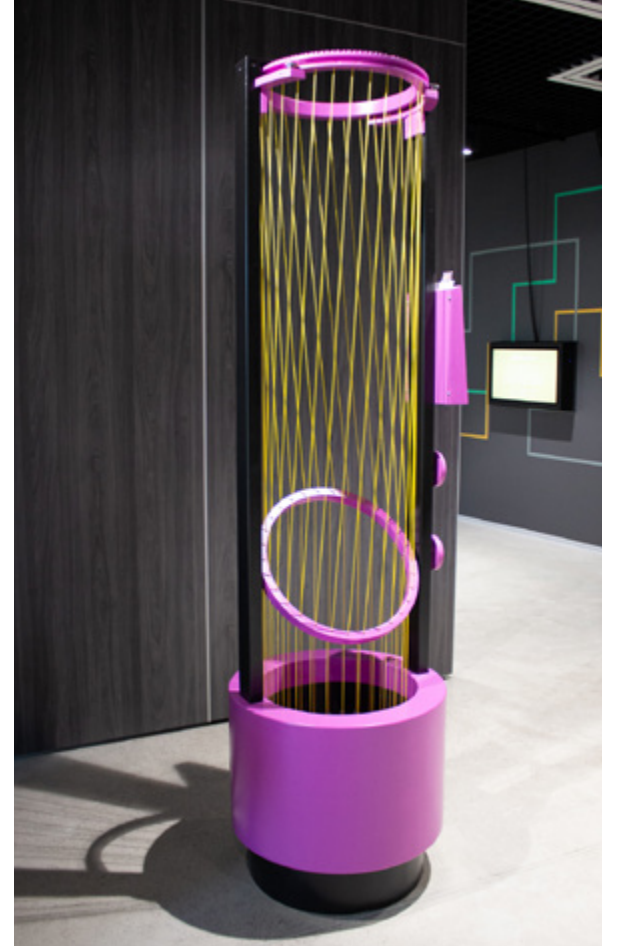
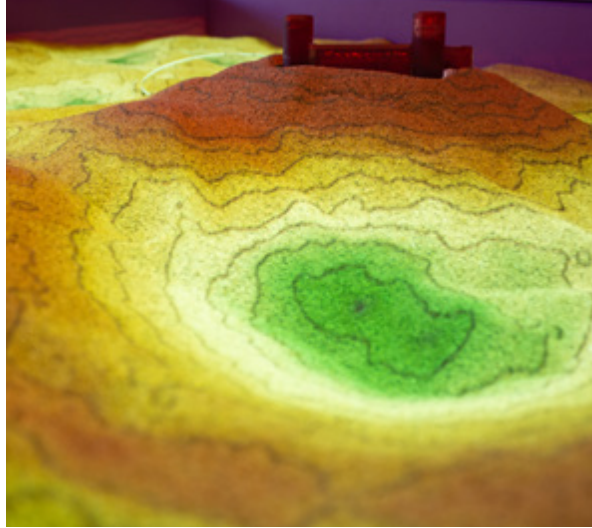
OUR ROLE:

- diagnosis of needs
- defining the development process
- proposals for 4 main exhibition topics
- 40 interactive exhibit design
- descriptions of interactive exhibits (functional description, educational purpose, interaction design)
- sketches of exhibit
- construction requirements
- materials for building exhibit
- exhibit dimensions
- exhibits' arrangement
- detailed design of the 'Water Tower' exhibit (technical drawings, technical description, materials)

MAIN TOPICS:

- mathematics and physics
- architecture
- technology
- optical illusions





Torus Science Park

IN CIECHANÓW

"Marszewo" Forest Botanical Garden

IN GDYNIA

DESCRIPTION: Development of the concept of natural exhibits and scenographic elements, scenarios for school groups and the educational path.

AREA: > 500 m²

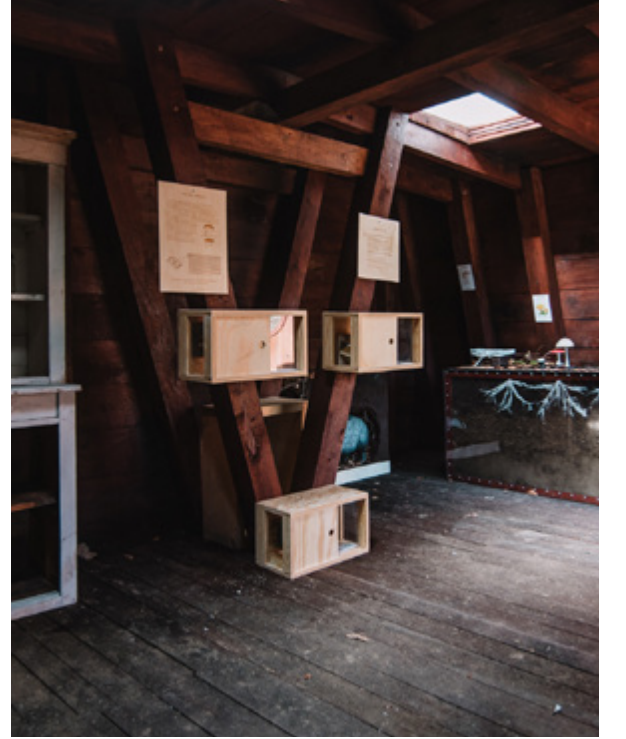
OUR ROLE:

- workshop with a designer for botanical garden educators – researching diagnosis of need
- proposals of exhibition topic
- descriptions of interactive exhibits (ideas for interaction)
- exhibits sketches
- design requirements for exhibit
- arrangement of exhibits and scenery in the Garden
- list of topics for educational stands

MAIN TOPICS:

- forest products
- herbs and their use
- bees
- mycorrhiza
- tree life
- edible and inedible mushrooms
- polyphores and their use
- soil cross-sections
- insects
- badger, shrew and dormice
- facts and myths about nature





"Marszewo" Forest Botanical Garden IN GDYNIA

Environmental exhibition for forestry education center

IN JEZIORY WIELKIE

DESCRIPTION: Development of the concept of an interactive educational exhibition.

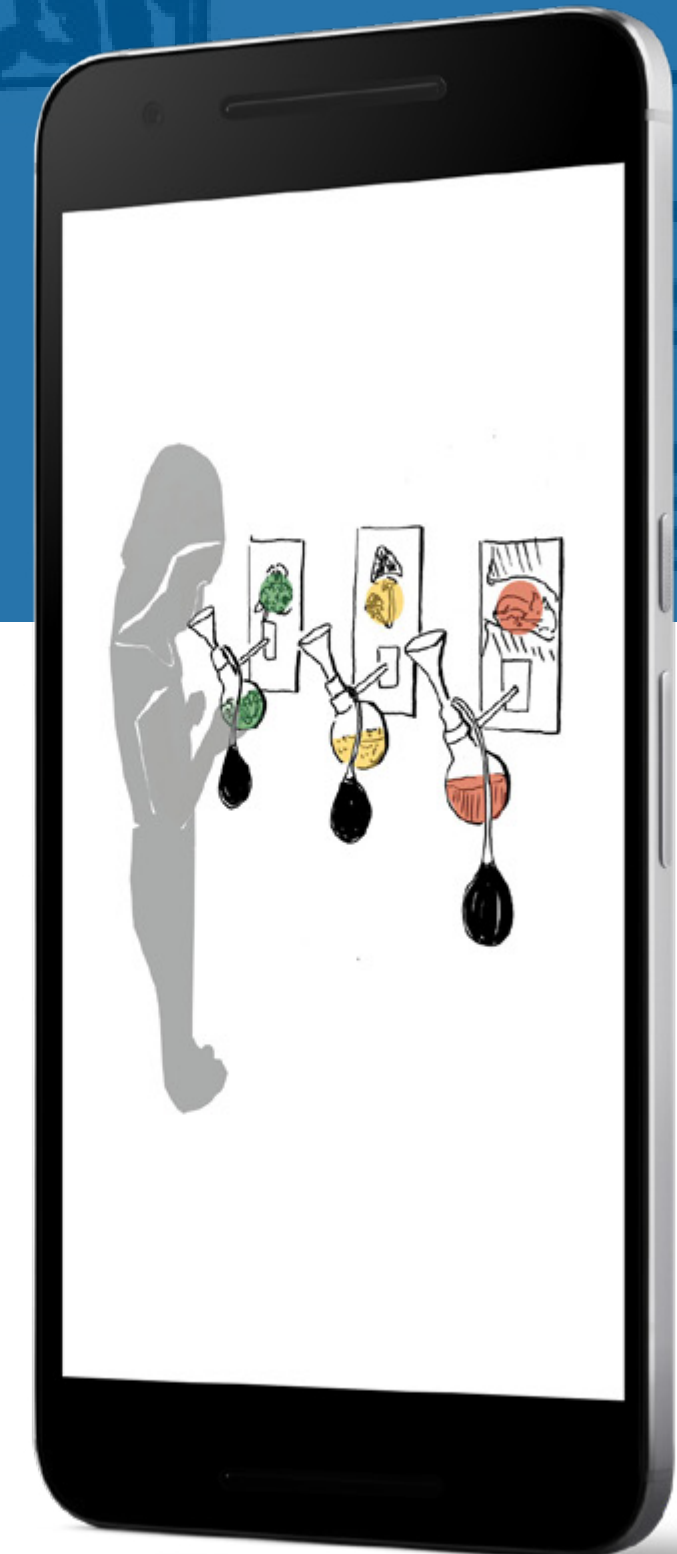
AREA: 100 m²

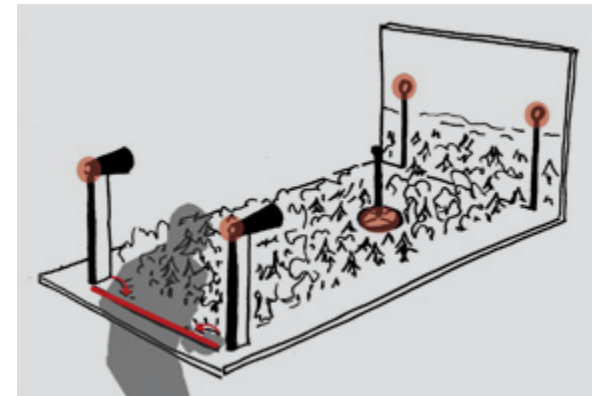
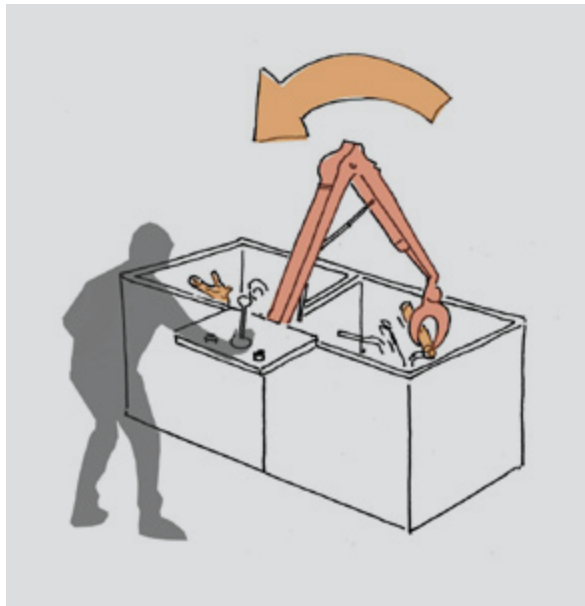
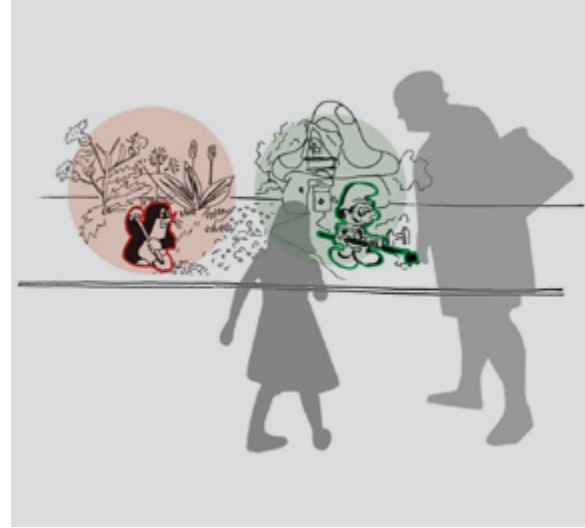
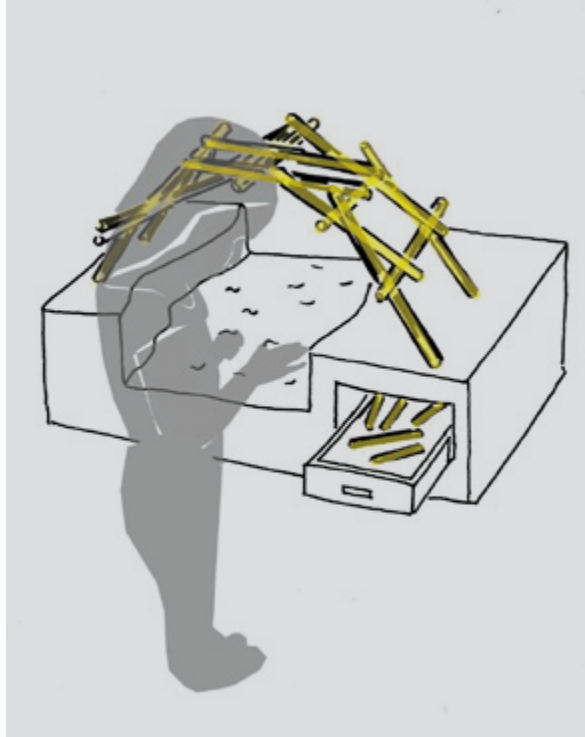
OUR ROLE:

- diagnosis of need
- development of exhibition basic requirement
- proposals of exhibition topic
- descriptions of interactive exhibits (interaction design)
- sketches of exhibit
- design requirements for exhibit
- arrangement of exhibits in the building

MAIN TOPICS:

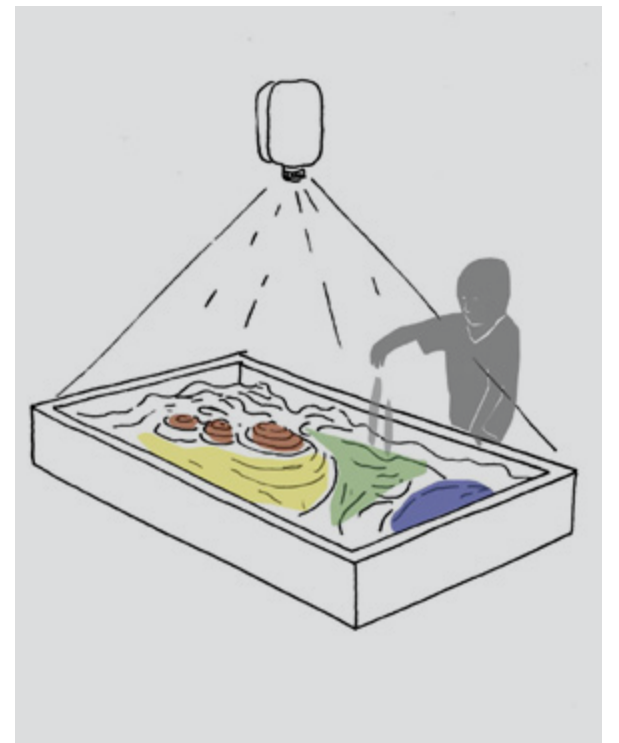
- forest breeding and use
- forest protection
- timber: the greatest material of all time
- geology
- the culture-forming role of the forest





Environmental exhibition for forestry education center

IN JEZIORY WYSOKIE



Modernization of the "On the revolutions" exhibition

IN INNOWATION CENTER MILL OF KNOWLEDGE

The exhibition presents issues related to rotational movement, construction of the solar system and space exploration. It contains exhibits showing the operation of simple machines using rotary motion, such as a wheel, gears and pulleys. As a result of modernization, some exhibits will be replaced or modernized, 11 new exhibits and stage design elements will be created.

MAIN TOPICS OF THE EXHIBITION – WHAT CAN YOU SEE WHAT CAN YOU LEARN:

- check what black gravity is
- find out if you can see the other side of the moon
- see what the Big Dipper looks like from a place other than Earth in Space
- compare how much a 2kg ball weighs on Mars , Earth and Moon
- find out why cosmic brumous are so colorful

MAIN TOPICS:

- rotational movement
- construction of the solar system
- space exploration

OUR ROLE:

- modernization of 14 exhibits
- design and construction of 11 new exhibits
- design and construction of stage elements
- dismantling of old exhibits



OTWARCIE: JESIEŃ 2020



Modernization of the "On the revolutions" exhibition

IN INNOWATION CENTER MILL OF KNOWLEDGE



**Own travelling
exhibitions**

EXHIBITION

Get Connected!

Get Connected! is a travelling exhibition showcasing diverse ways of long distance communication. It depicts physical phenomena, presents human technical achievements within telecommunications and inspires to reflect upon chances and dangers emerging from technology development. It is an educational playground for visitors of all ages.

TARGET GROUP: 6+ (school groups, families with children)

MAIN TOPICS OF THE EXHIBITION – WHAT CAN YOU SEE WHAT CAN YOU LEARN

- can you see your own voice?
- encrypt your name in the Morse alphabet
- find out how fast your voice is carried in the air
- send a message by mail from Bullerbyn
- check how the satellite works

OUR ROLE:

- exhibition transportation
- assembly and disassembly
- staff training
- explainer services
- thematic educational workshops

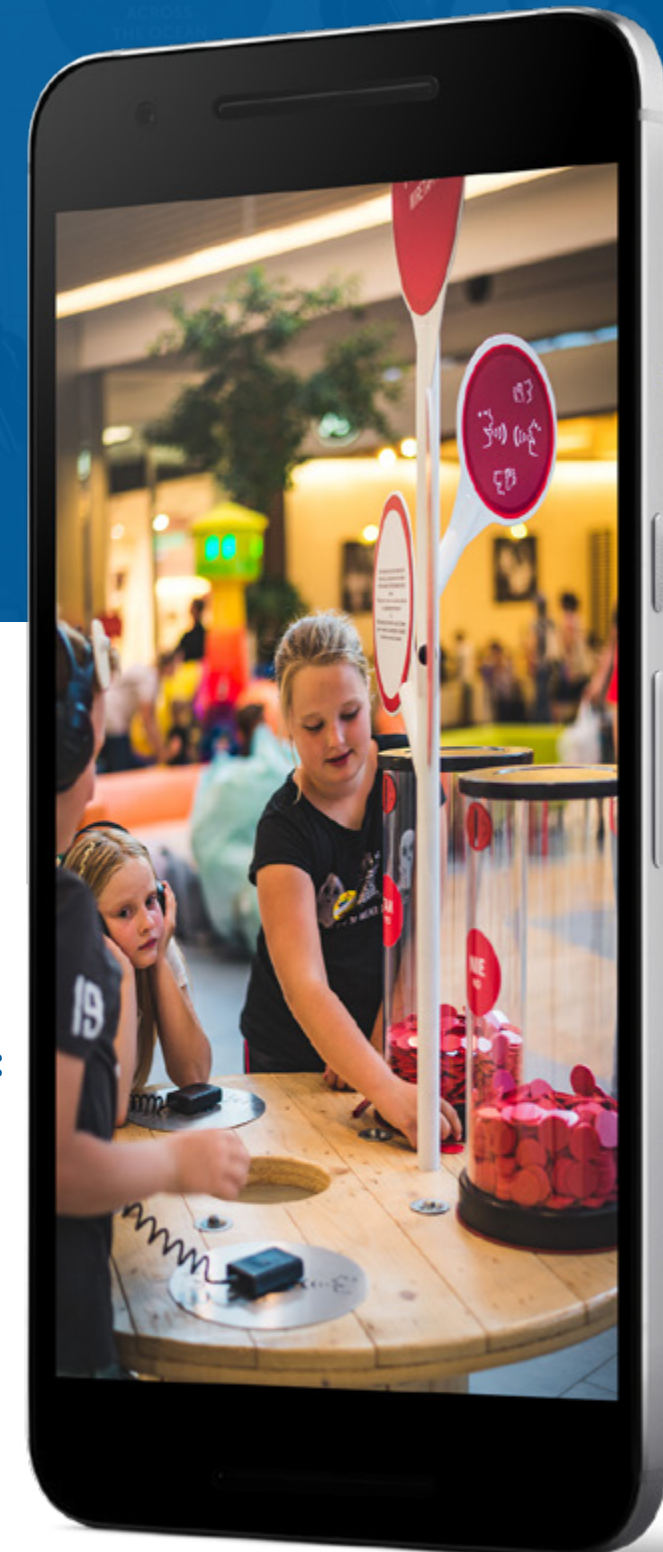
MAIN TOPICS:

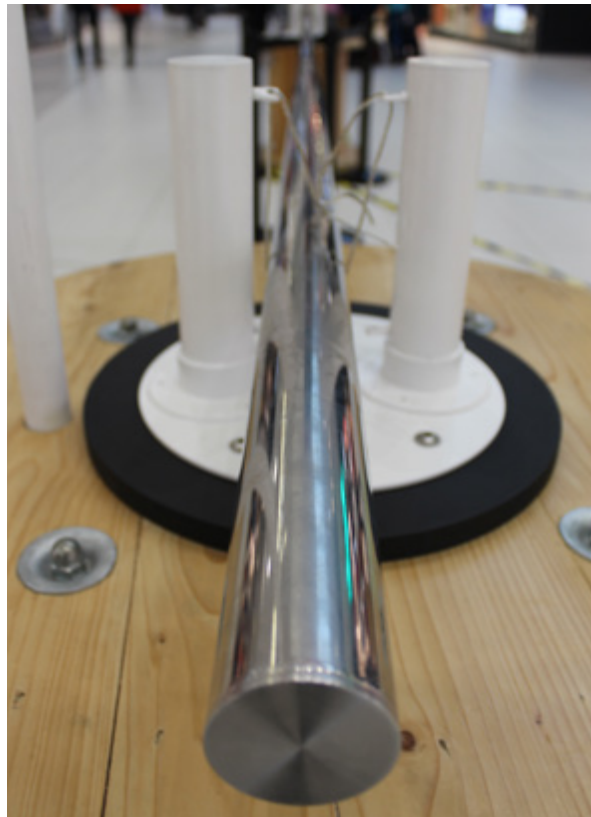
- distance communication

PRODUCTION REQUIREMENTS FOR RENT:

- Area – 100-210m²
- Number of exhibits – 10-18
- Scenography – number of elements – 4
- Room height – min. 3.2 m
- Minimum rental time – 10 day
- Ready language versions – Polish, English, Russian, Czech

* adaptation to another language possible





EXHIBITION
Get Connected!



EXHIBITION
Get Connected!

EXHIBITION

Illusion or reality?

The exhibition introduces you to the world of illusion, talks about the mysterious nature of light and explains human neurological structure. The exhibition includes exhibits devoted to the colors creation, light splitting, prisms and the structure of the eye. Visitors will also have lots of fun with illusions, distorted mirrors, Phoenician (Venetian) mirrors and a lot of tasks related to drawing in unusual situations.

TARGET GROUP: 6+ (school groups, families with children)

OUR ROLE:

- exhibition transport
- assembly and disassembly
- staff training
- explainer services
- thematic educational workshops

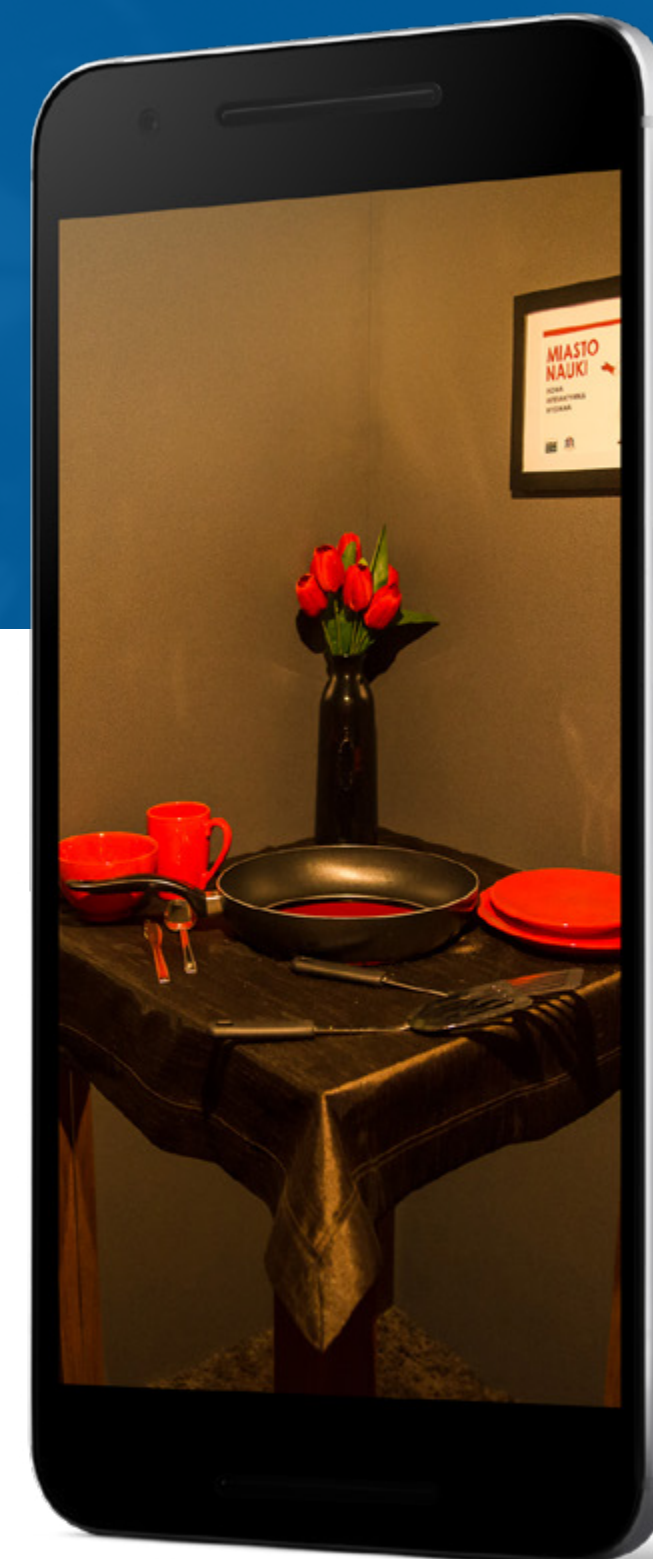
MAIN TOPICS:

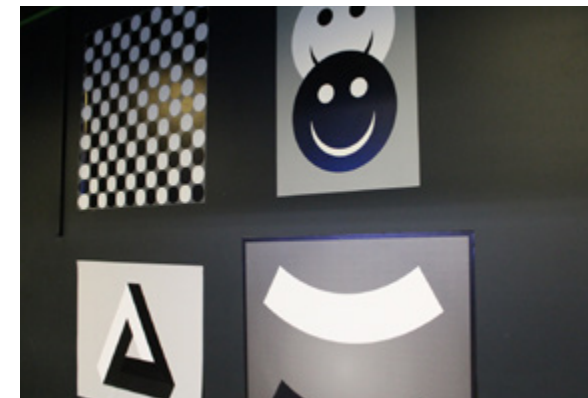
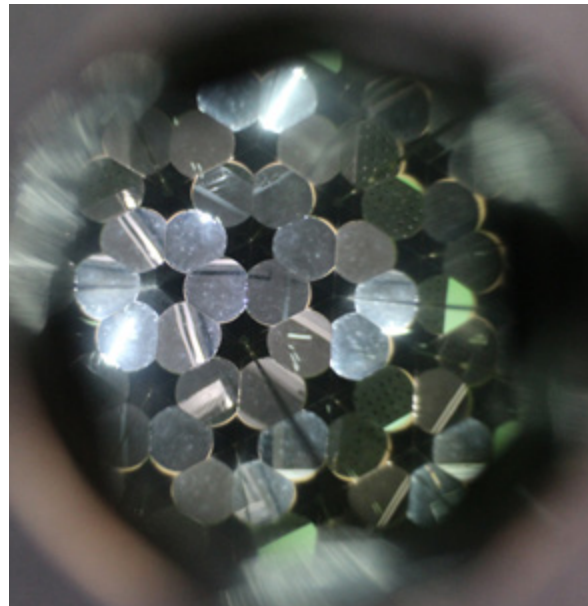
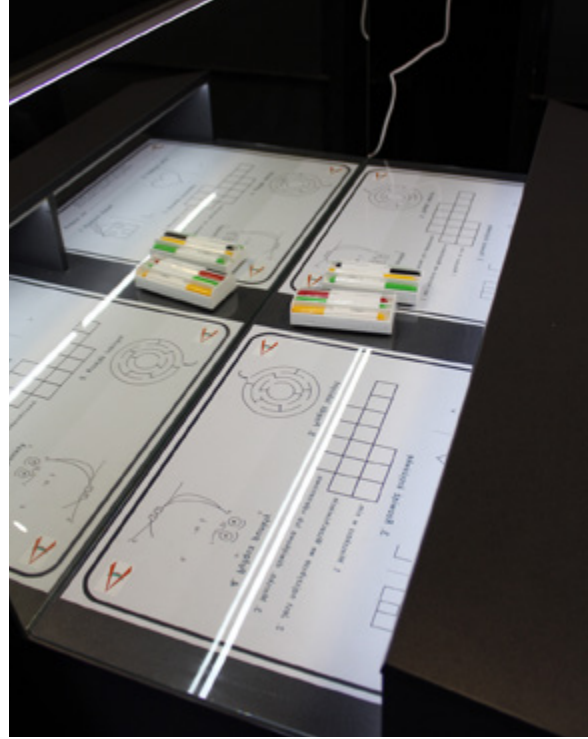
- optics

PRODUCTION REQUIREMENTS FOR RENT:

- Area – 100-250m²
- Number of exhibits – 10-28
- Scenography – number of elements – 3
- Room height – min. 3m
- Minimum rental time – 10 day
- Ready language versions – Polish, English, Russian

* adaptation to another language possible





EXHIBITION Illusion or reality?



EXHIBITION

Being human

Our bodies serve us every second of our lives – we flex our muscles, move our joints, our hearts beat. Are we fully aware of the complexity of our body? Do we know how it works? The exhibition presents the secrets of the human body and helps to understand how we move limbs, feel the taste and smell, and how the image from our eye is processed in the brain.

TARGET GROUP: 6+ (school groups, families with children)

OUR ROLE:

- exhibition transport
- assembly and disassembly
- staff training
- explainer service
- thematic educational workshops

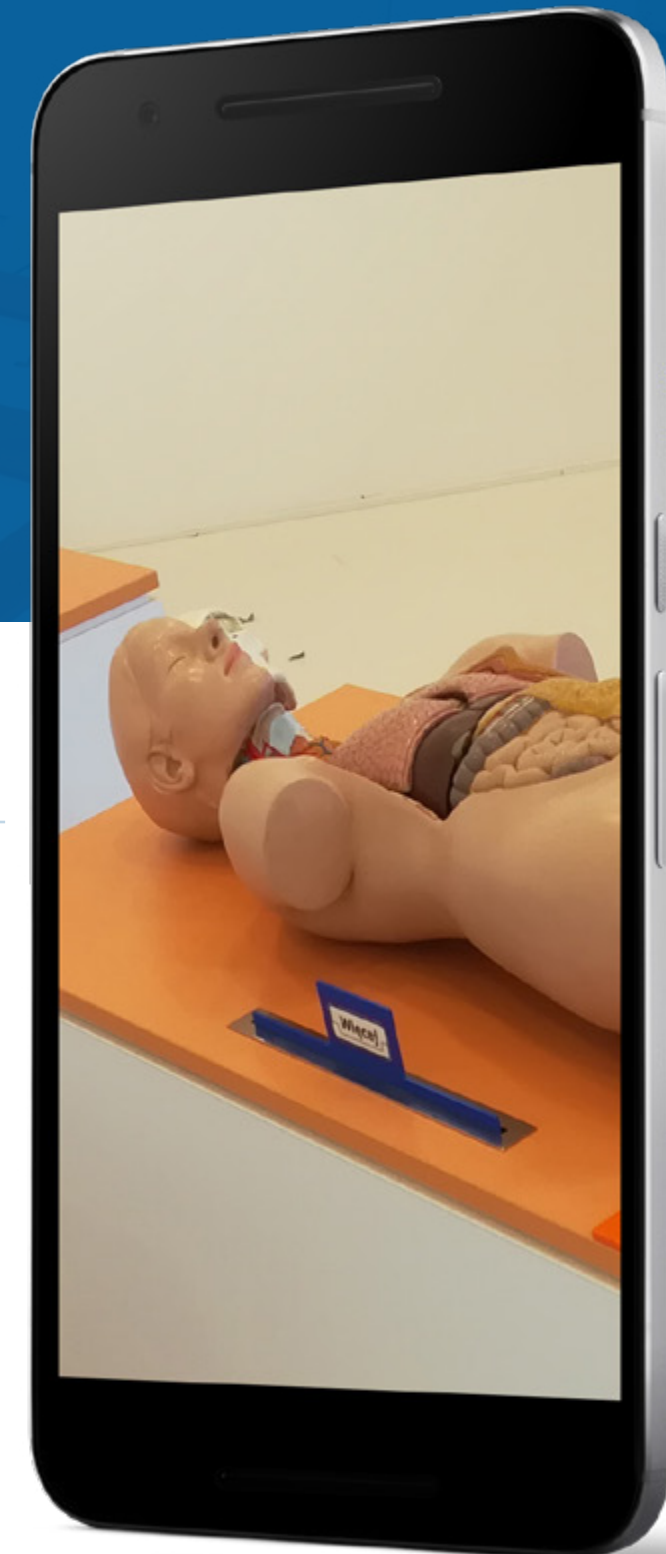
MAIN TOPICS:

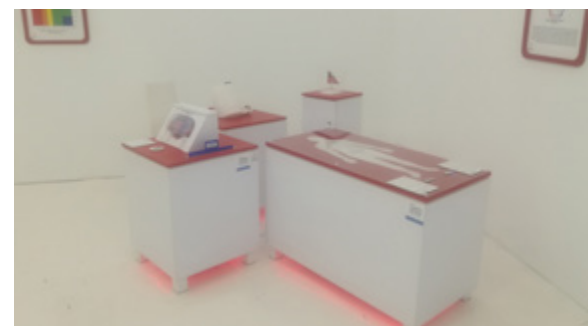
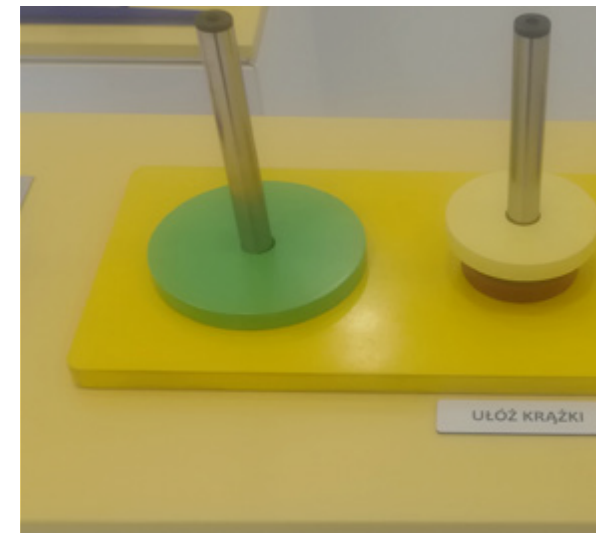
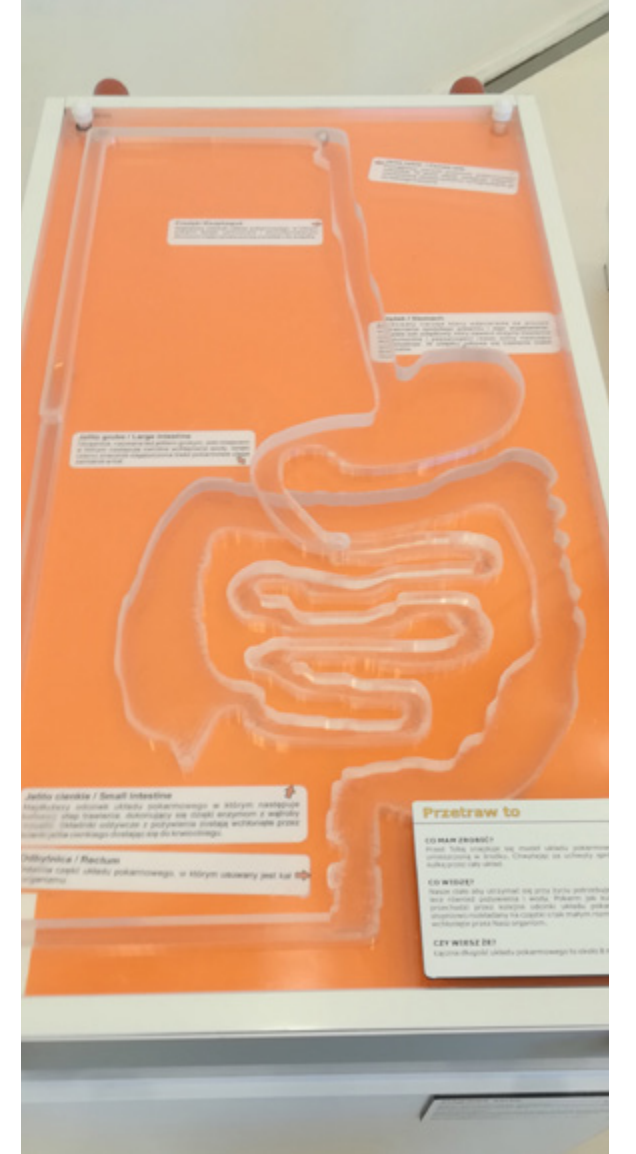
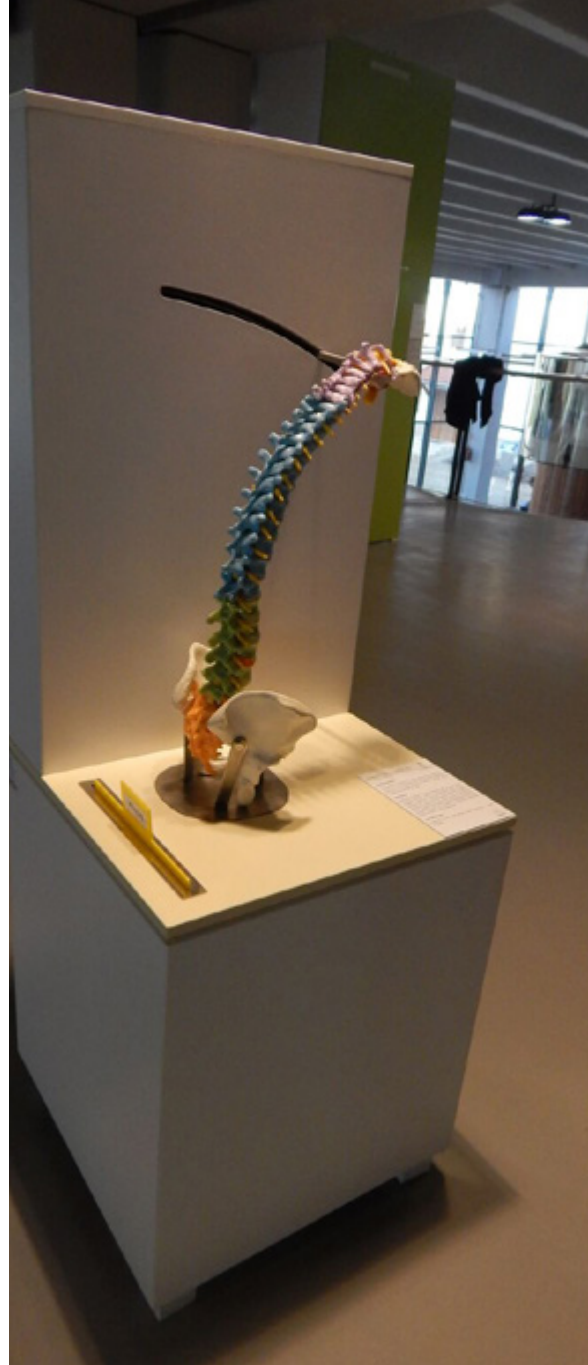
- human body structure

PRODUCTION REQUIREMENTS FOR RENT:

- Area – 150-330m²
- Number of stands – 25-31
- Scenography – number of elements – 6
- Room height – min. 2.5m
- Minimum rental time – 14 day
- Ready language versions – Polish, English, Russian

* adaptation to another language possible





EXHIBITION Being human

EXHIBITION

Keen senses

An interactive exhibition engaging all senses. An exciting adventure in search of the reason why we hear, see and feel. Thanks to interactive exhibits, visitors can independently discover their limits of field vision and check their hearing range. The exhibition invites you to have fun while building and breaking down the brain into its first parts, searching for invisible objects and guessing smells. The exhibition involves not only the mind but also the body. It arouses emotions. It provides both fun and reliable knowledge.

TARGET GROUP: 6+ (school groups, families with children)

OUR ROLE:

- exhibition transport
- assembly and disassembly
- staff training
- explainer service
- thematic educational workshops

MAIN TOPICS:

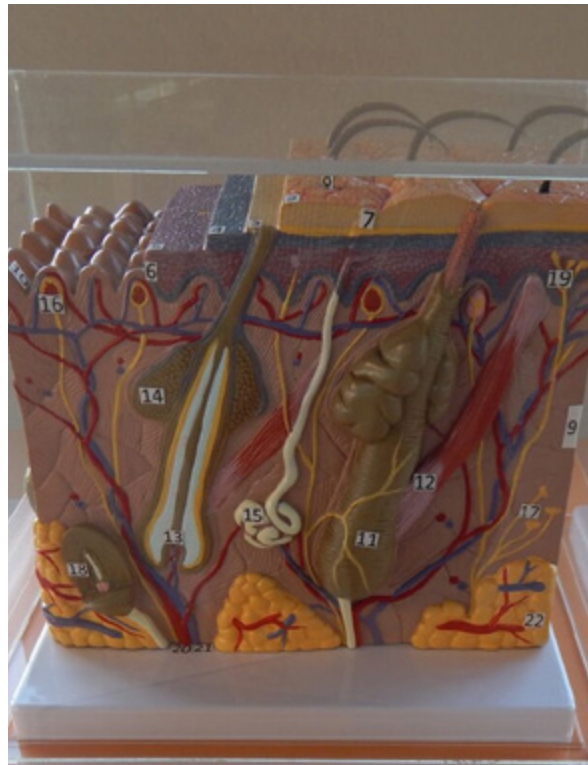
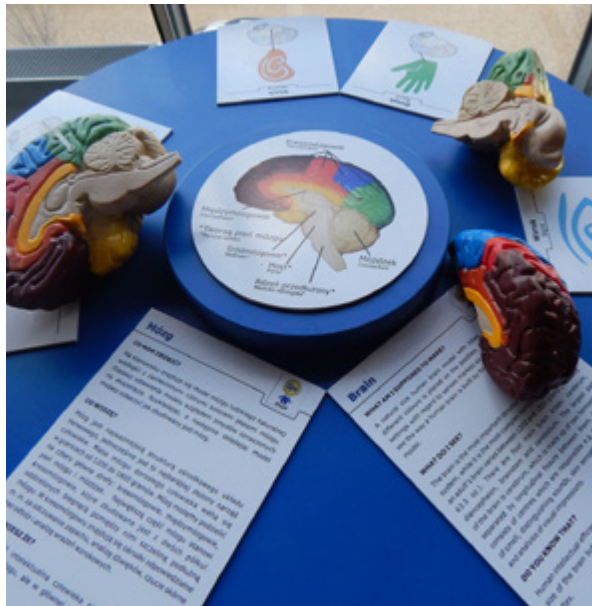
- senses

PRODUCTION REQUIREMENTS FOR RENT:

- Area – 70-150m²
- Number of stands – 6-11
- Scenography – number of elements – 4
- Room height – min. 2.5 m
- Minimum rental time – 14 day
- Ready language versions – Polish, English, Russian

* adaptation to another language possible





EXHIBITION Keen senses

EXHIBITION

Secrets of the human body

A unique interactive exhibition about human anatomy. The most fascinating biological and physical knowledge passed on through engaging experiences. Thanks to them, Visitors can learn the body types, accurately measure the strength of their hand muscles, as well as check their memory and reflexes. Among the exhibits there are also riddles and puzzles that deepen knowledge about the structure of the heart and other internal organs, the structure and range of joint movement, and the arrangement of veins and arteries in the body. The exhibition involves not only the mind but also the body. It arouses emotions. It provides both fun and reliable knowledge.

TARGET GROUP: the exhibition is addressed to family audience and school groups.

OUR ROLE:

- exhibition transport
- assembly and disassembly
- staff training
- explainers services
- thematic educational workshops

MAIN EXHIBITION THEMES:

- building the human heart
- flexing joints
- measuring blood pressure

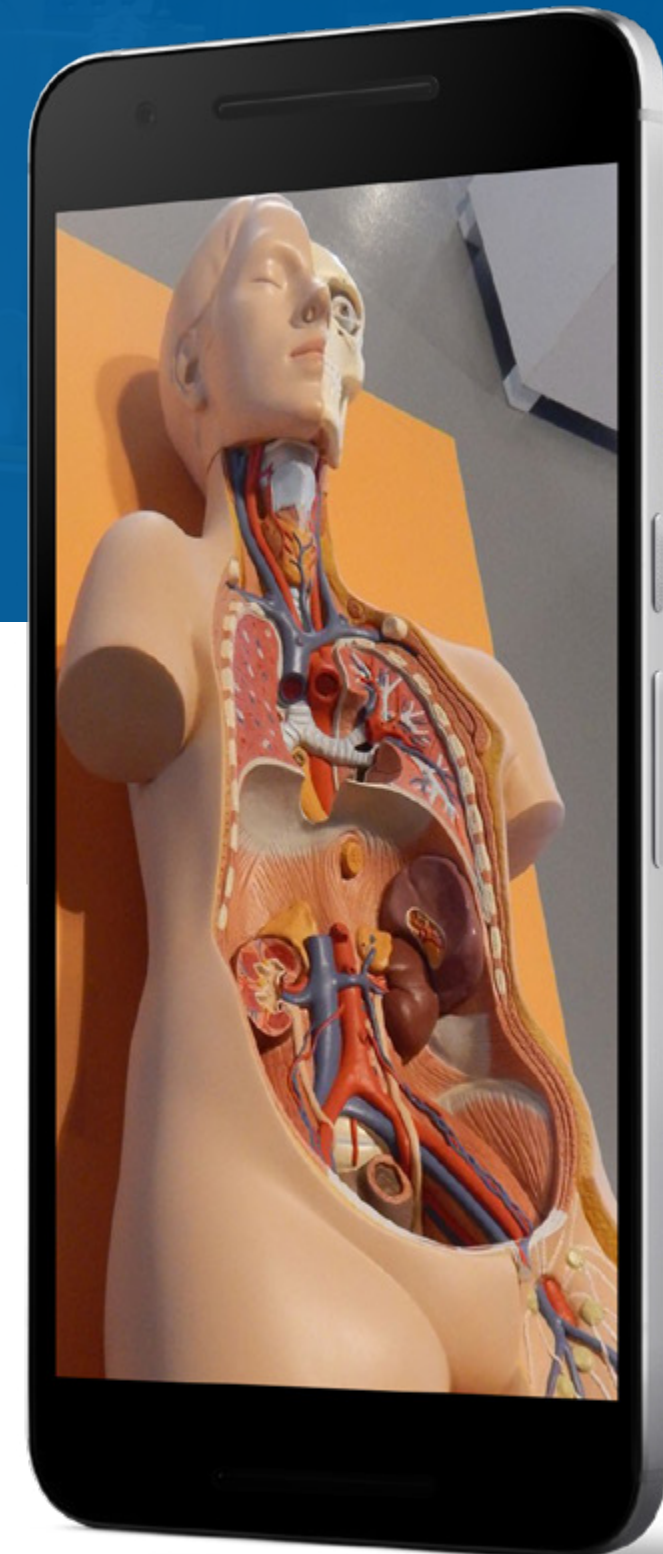
MAIN TOPICS:

- human physiology

WYMAGANIA PRODUKCYJNE WYNAJEM:

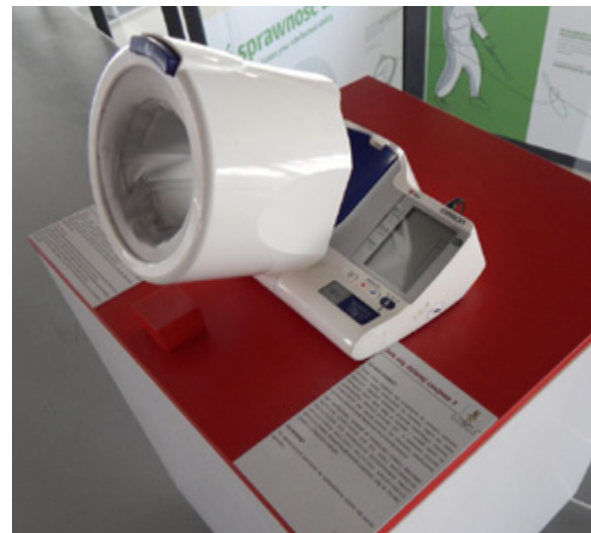
- Area – 150-220m²
- Number of exhibits – 12-21
- Scenography – number of elements – 3
- Room height – min. 2.5m
- Minimum rental time – 14 day
- Ready language versions – Polish, English, Russian

* adaptation to another language possible





Rzeka życia
CO NAM PROBUJE?
Dobrym towarzyszem jest zdrowy serce, które przesyła krew do wszystkich części ciała.
CO WIDZIE?
Serce jest pomysł, który naciska na całym organizmie. Dzięki energii, którą dostarcza, krew przemieszcza się do wszystkich części ciała.
CZY WIEŚZ?
Krew to płynna substancja o barwie czerwonej, która przemieszcza się w całym organizmie. Krew zawiera wiele ważnych składników, które są niezbędne do życia.



EXHIBITION Secrets of the human body

EXHIBITION

The world of chemical experiments

Chemistry is not only hidden in laboratories, glass flasks and test tubes. Real chemistry is us – the people and our environment. See for yourself that science is all around. All you need to do is look around to see it in everyday life. The exhibition was divided into three thematic zones: Home, Eco, Lab. In 2020, we will invite you to check out our completely new travel exhibition.

TARGET GROUP: 6+ (school groups, families with children)

ABOUT THE EXHIBITION:

- Exhibition area: 330m²
- Modular exhibition with the possibility of adapting to the area,
- Possibility to rent each exhibition module separately: MODULE: Home, MODULE: Eco, MODULE: Lab,
- Number of exhibits: 30 items (10 items each) in each module),
- Exhibits have instructions and descriptions in Polish and English.
- Adaptable to other language versions.
- Exhibits are made of safe materials and meet safety standards.

WHAT WE PROVIDE:

- Design of space arrangement,
- Transport, assembly and disassembly of the exhibition,
- curating the exhibition and service
- Educational materials,
- Additional service: explainers service with substantive training.

AVAILABILITY:

- April 2020



NEW IN 2020!



**Mobile
exhibitions**

SCIENCE CENTRE OF LESSER POLAND VOIVODESHIP Cogiteon – Naukowiej

„Naukowiej” is the only interactive mobile exhibition of its kind in Poland about the air. The exhibition encourages independent learning about natural phenomena. The exhibition was installed in a special truck trailer traveling mainly in small towns and reaches thousands of children, families and school groups every year. Visitors learn, among others how smog is created, what is the capacity of human lungs and how a hovercraft works. The exhibition consists of over a dozen exhibits that allow you to conduct experiments on your own.

MAIN THEMES OF THE EXHIBITION OR WHAT YOU CAN SEE WHAT TO LEARN:

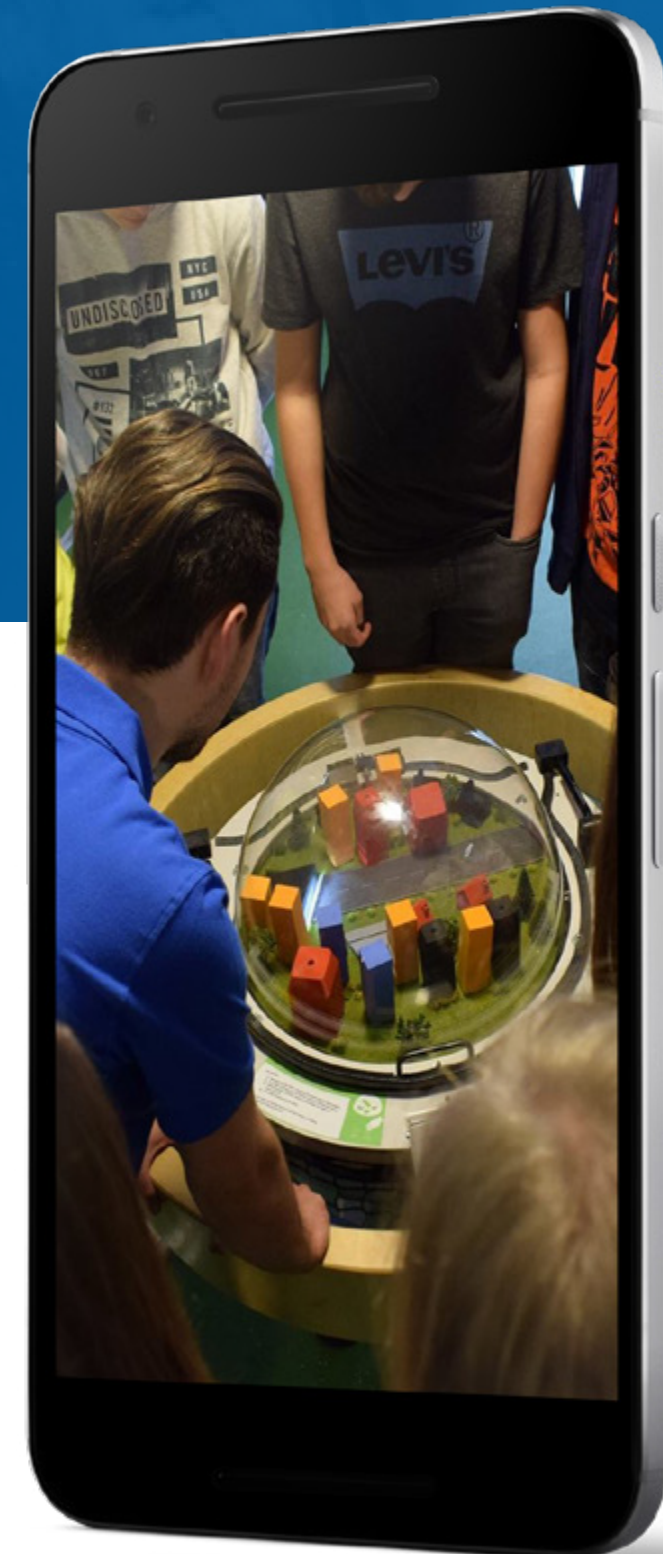
- check how Małopolska smells
- take a gusty selfie!
- weigh the air
- examine your lung capacity

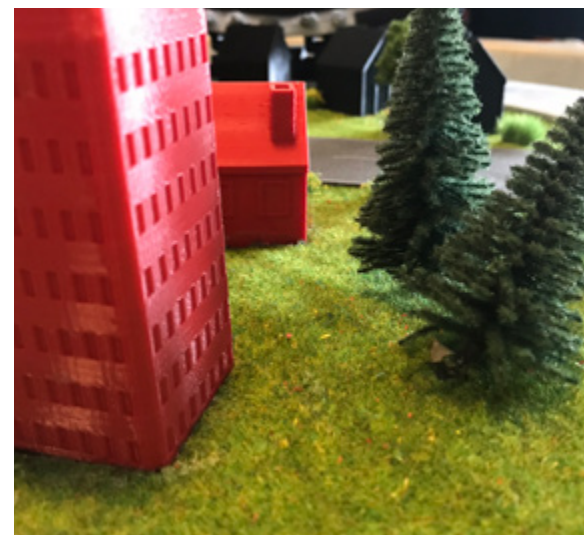
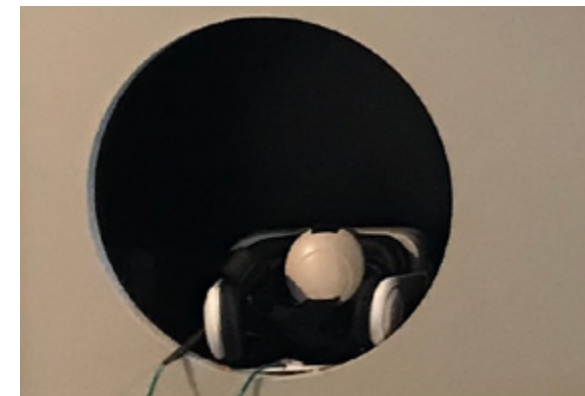
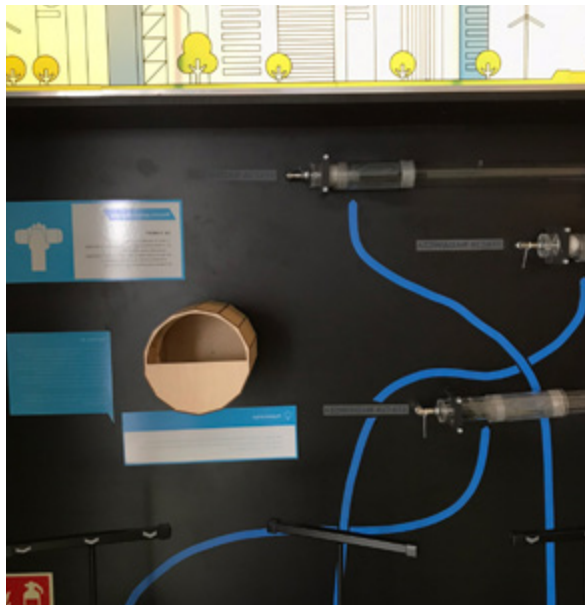
MAIN TOPICS:

- air - properties and function in human life

OUR ROLE:

- fine-tuning the basic requirements of exhibits
- design, technical and graphic designs
- prototype construction and testing
- exhibits production
- assembly of exhibits in the truck's trailer
- description and instructions for exhibits
- exhibition description
- explainers training
- as-built documentation
- exhibition service





**SCIENCE CENTRE OF
LESSER POLAND VOIVODESHIP
Cogiteon – Naukowiej**

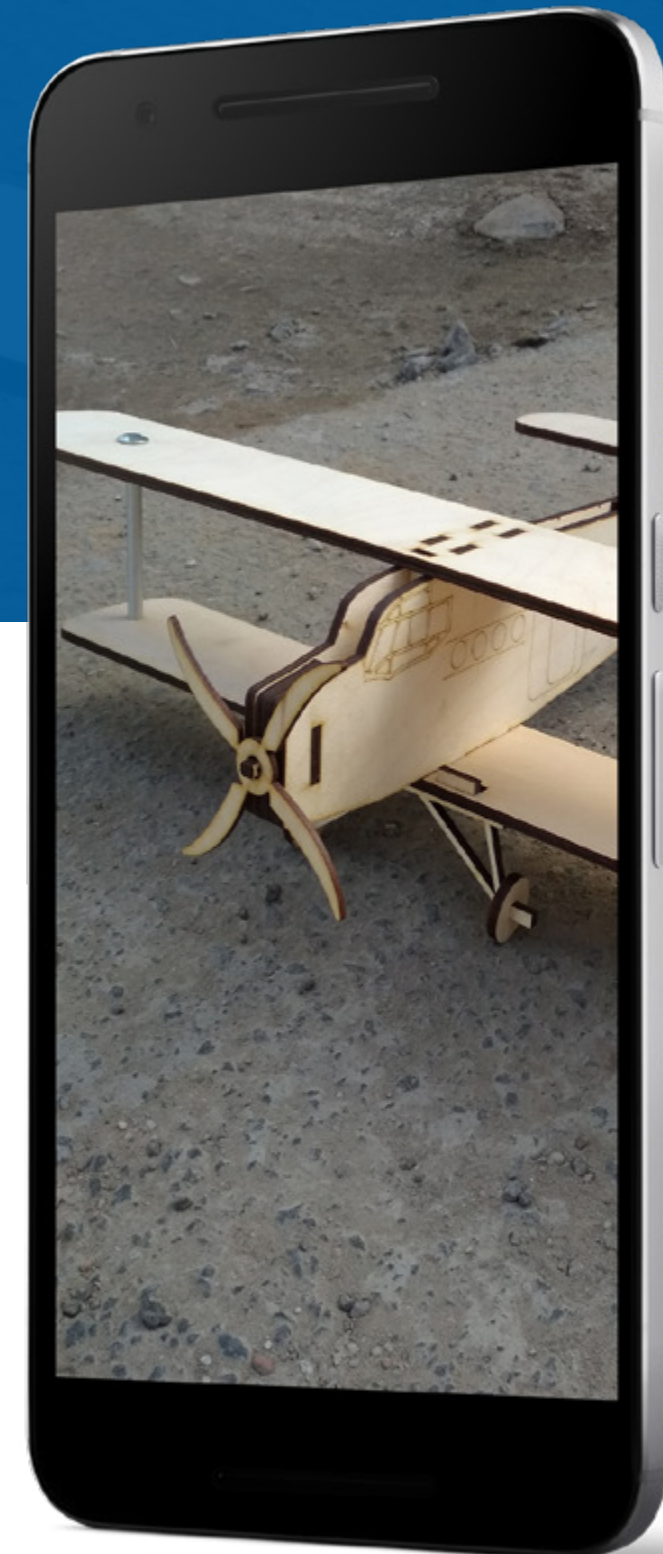
AIR EXHIBITION Foundation for the Support of Education at the Aviation Valley Association

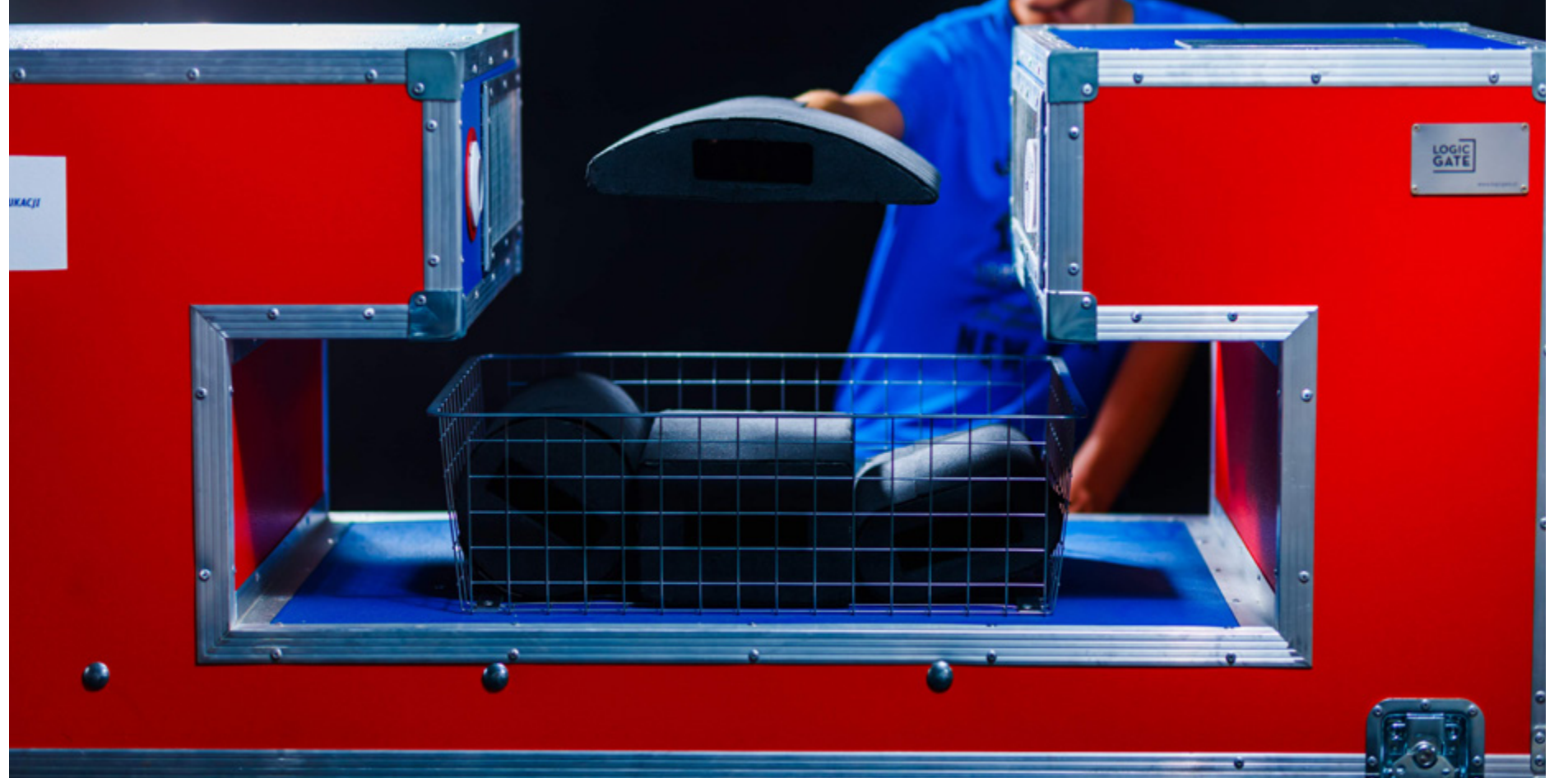
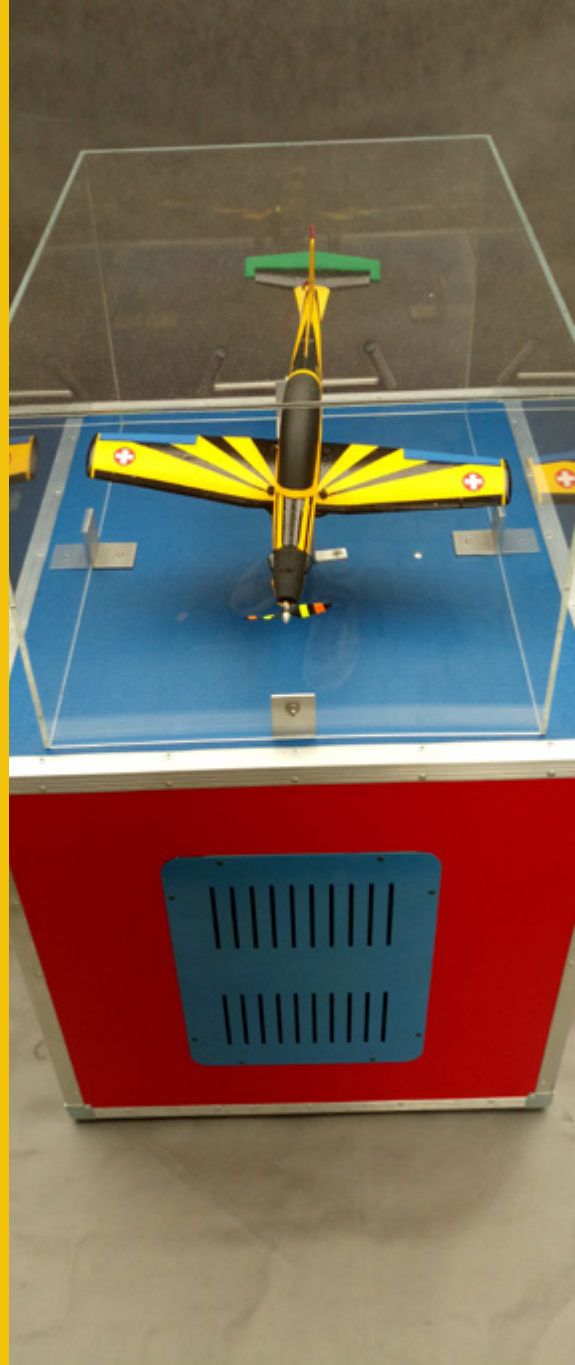
OUR ROLE:

- developing requirements for exhibits
- developing design and technical designs
- prototype construction and testing
- production of mobile exhibits,
- exhibition descriptions and instructions

MAIN TOPICS:

- aviation
- air





AIR EXHIBITION
Foundation for the Support
of Education at the Aviation
Valley Association

4+



**Educational
events**



IKEA in Łódź

WORKSHOPS FOR CLIENTS



Warsaw Museum

HAND MAKING RECYCLED PAPER WORKSHOP

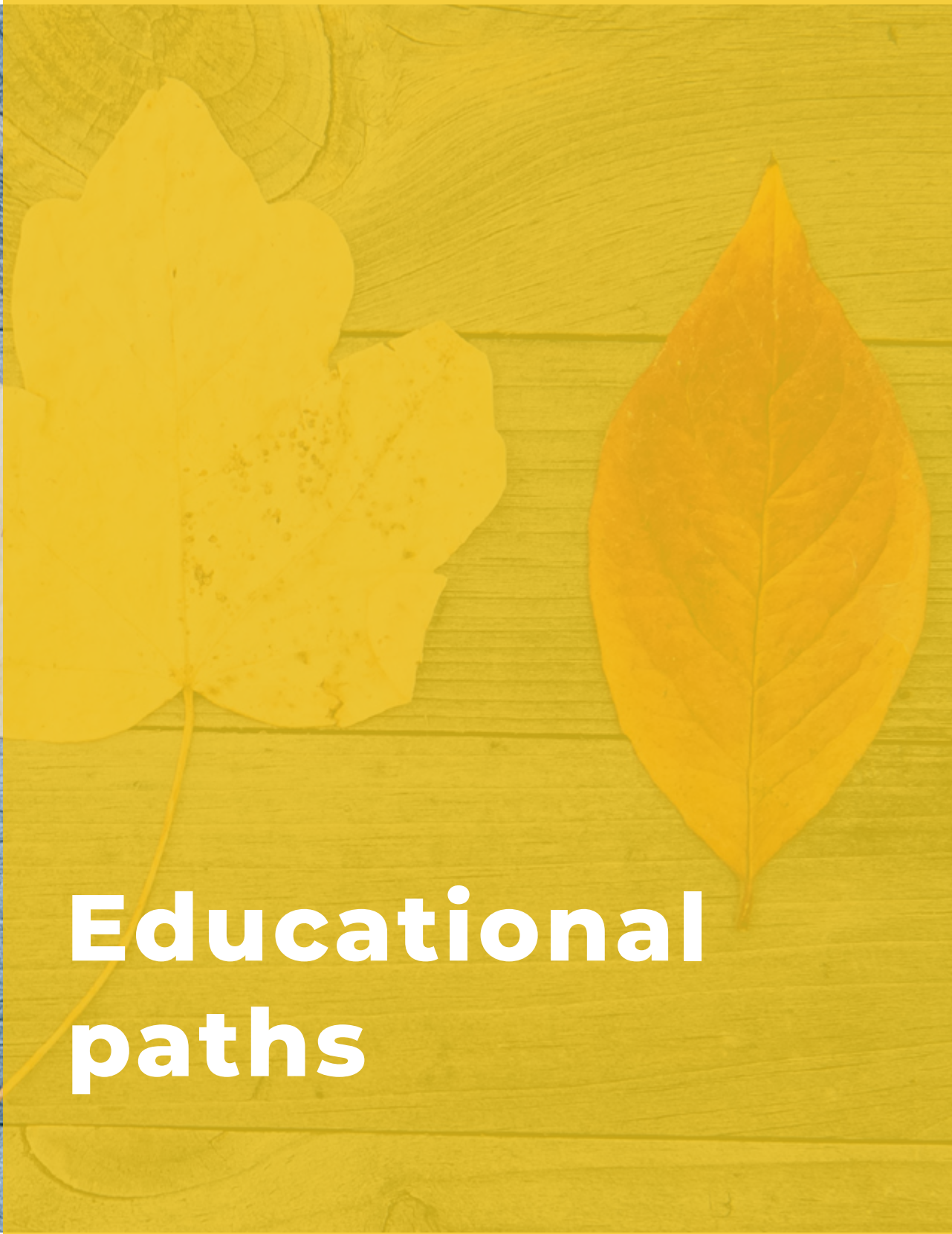
10h; 2 animators, 30-mins sessions



Science Picnic Exploracje in Rzeszów

EDUCATIONAL WORKSHOPS IN A TENT

10h; 3 animators, 20-mins sessions



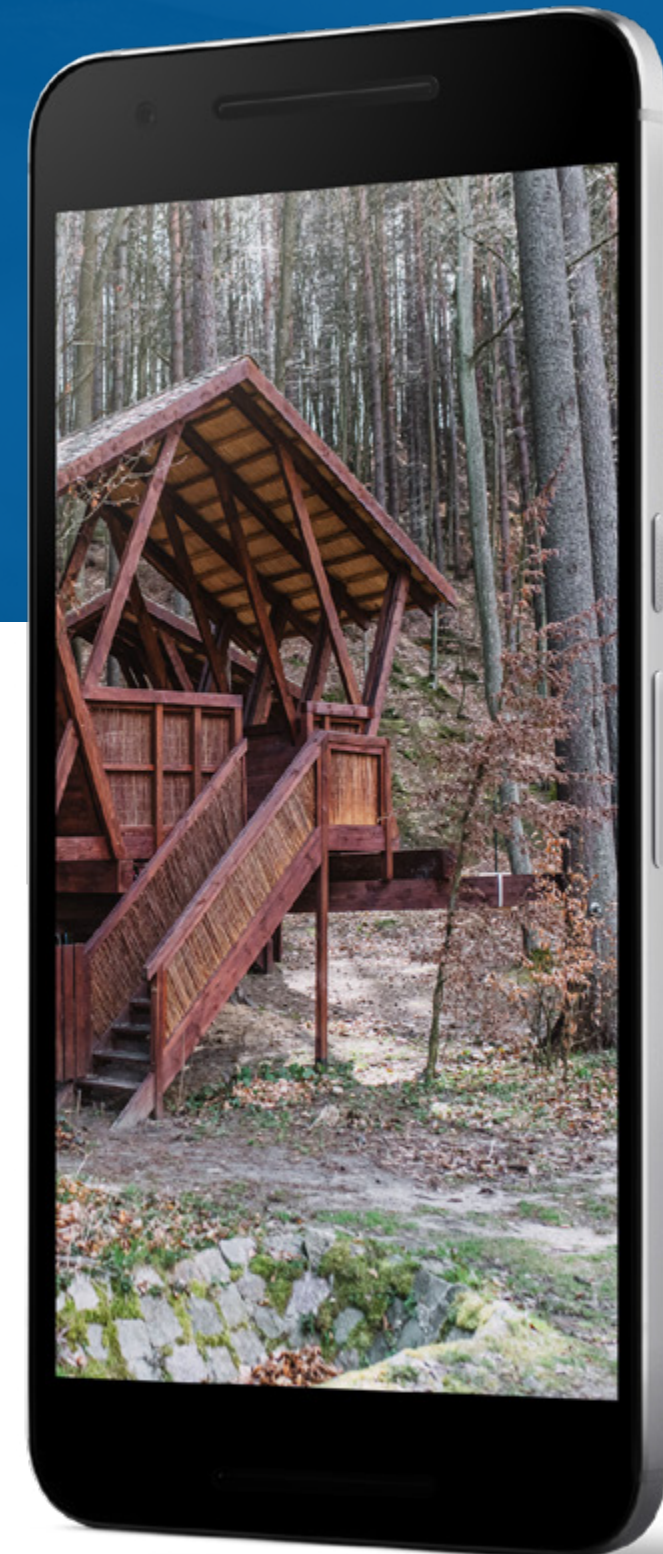
**Educational
paths**

Forest Botanical Garden “Marszewo”

IN GDYNIA

OUR ROLE:

- audio guide of the Garden (preparation of 15 texts and recordings)
- production of 15 wooden casings for beacon
- installation of 15 beacons in the Garden
- scenarios for games for different age groups (preschool children, early education, grades 4-6, grades 7-8 and high schools, parents with children)
- Garden educators training





Forest Botanical Garden "Marszewo"

IN GDYNIA



**Interactive
exhibitions**



MOBILE TRAVELLING EXHIBITS





STATIONARY EXHIBITS



OUTDOOR EXHIBITS



INTERACTIVE EXHIBITIONS



INDOOR EXHIBITS



**EDUs boxes –
innovative
educational aids**

A portable laboratory for group work

- enables emotions and increases the effectiveness of the learning process!
- stimulates curiosity of the world and develops children's interest in science
- teaches agency, develops XXI century skills

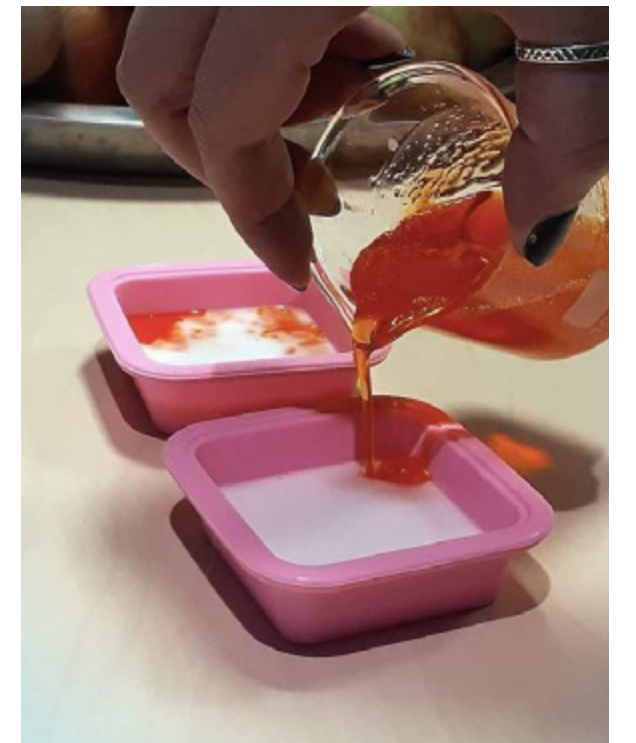
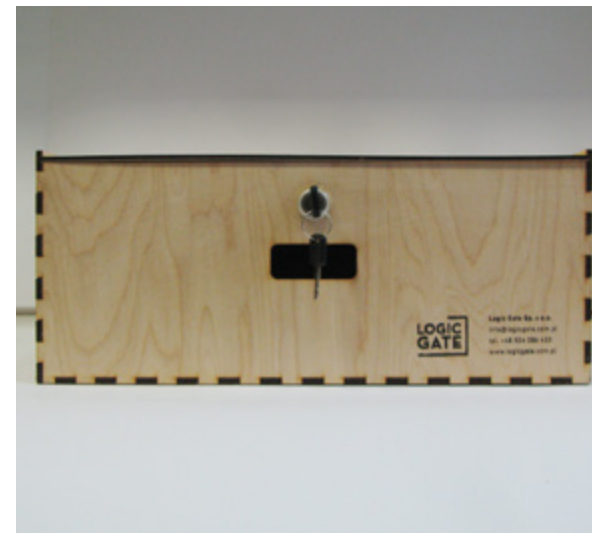
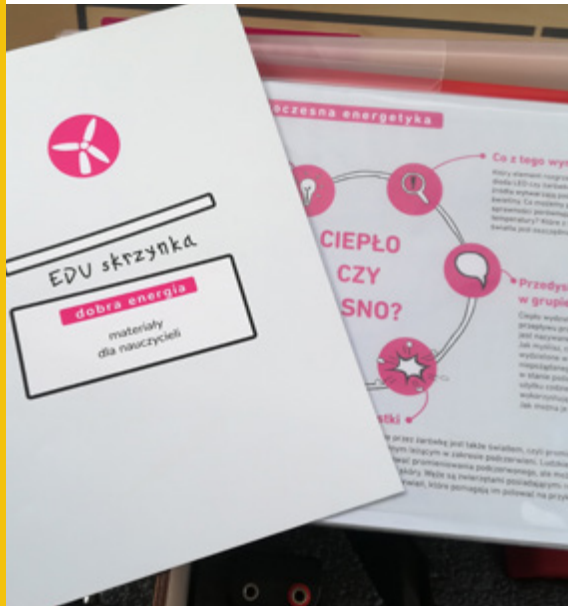
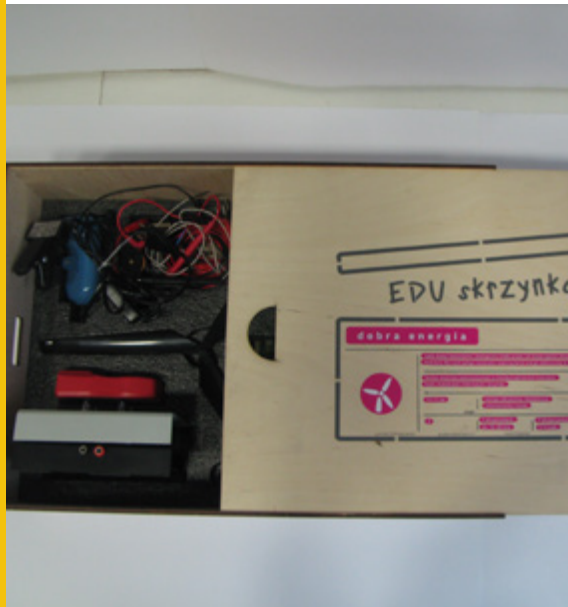
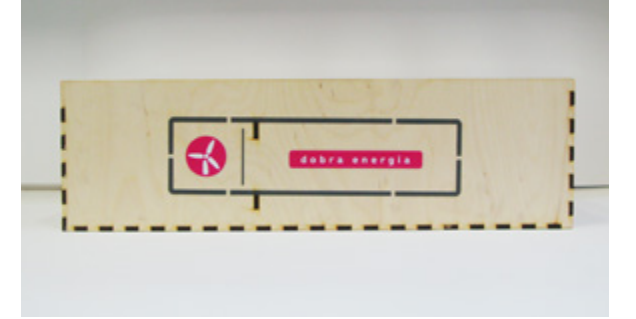
IN EACH BOX:

- a complete set of instruments for conducting several experiments,
- teaching materials for workshop leaders and experiment scenarios for participants,
- inspiration for conducting additional experiments

TOPICS:

- energy
- bioplastic
- household chemistry
- recycling
- sustainable development
- animals
- eco-planet





The logo for Logic Gate, featuring the words "LOGIC" and "GATE" stacked vertically in a bold, white, sans-serif font. The text is enclosed within a white square frame that has a small gap at the top-right and bottom-left corners, resembling a stylized gate or a bracket.

**LOGIC
GATE**

A vertical graphic element consisting of a yellow rectangular background. The word "Team" is written vertically in a large, white, sans-serif font, centered within the yellow area.

Team

JULIA NOWICKA

President, co-founder of Logic Gate, sociologist, researcher, trainer. Co-creator of interactive exhibitions, co-author of the concept of science centers and educational centers. In the years 2005–2013 she worked at the Copernicus Science Center, where she was responsible for, among others: institution's development strategy, program and exhibition testing. Privately a lover of mountain hiking.

BRUNON PODLACHA

Sales specialist, manages accounts of clients connected to environmental and forest education. Privately, a musician playing 3 instruments, who likes hiking in the woods.

TOMASZ GAJEWSKI

Exhibition production and service specialist. He constructs and modernizes exhibits. He is interested in technical innovations. Privately, a sailor in the rank of captain and an avid DIYer.



Contact

If you want to host a traveling exhibition, build a new exhibition or create your own science center from scratch, we'll be more than happy to help you.

+48 504 086 433

info@logicgate.com.pl